

## **IBM® Rational® Rhapsody® Gateway Add On**



### **Release Notes**



***Rhapsody<sup>®</sup>***

**IBM<sup>®</sup> Rational<sup>®</sup> Rhapsody<sup>®</sup>  
Gateway Add On**

**Release Notes**



## **License Agreement**

No part of this publication may be reproduced, transmitted, stored in a retrieval system, nor translated into any human or computer language, in any form or by any means, electronic, mechanical, magnetic, optical, chemical, manual or otherwise, without the prior written permission of the copyright owner.

The information in this publication is subject to change without notice, and Dassault Systèmes and its affiliates assume no responsibility for any errors which may appear herein. No warranties, either expressed or implied, are made regarding Rhapsody software and its fitness for any particular purpose.

## **Trademarks**

Reqtify is a registered trademark of Dassault Systèmes or its affiliates in the US and/or other countries.

Rhapsody Gateway, IBM, the IBM logo, DOORS and Rhapsody are trademarks or registered trademarks of IBM Corporation.

All other product or company names mentioned herein may be trademarks or registered trademarks of their respective owners.

© Copyright 2001-2012 Dassault Systèmes. All rights reserved.

# Contents

---

<b>Contents .....</b>	<b>5</b>
<b>Preface .....</b>	<b>11</b>
<b>Gateway 1.0 – Build 1357 .....</b>	<b>12</b>
<b>Gateway 1.0 – Build 1396 .....</b>	<b>14</b>
<b>Gateway 1.0 MR2 – Build 618.....</b>	<b>15</b>
Improvements of the DOORS interface .....	15
Changes in the Main Window .....	15
Changes in the Configuration windows .....	16
Reports Generation .....	18
Support of Chinese and Japanese documents .....	18
<b>Gateway 1.1 – Build 742.....</b>	<b>19</b>
Simulink Interface.....	19
Gateway files can be managed using Rhapsody CM capabilities .....	19
Option “1 module per package” for DOORS .....	19
Support of SysML and DoDAF Profiles .....	19
Improved management of requirements creation .....	20
Improved Documentation & Examples .....	20
<b>Gateway 1.1 – Build 743.....</b>	<b>21</b>
Extended Rhapsody Types Definitions .....	21
<b>Gateway 1.1m1 – Build 319.....</b>	<b>22</b>
Support of DOORS 8.0 .....	22
Support of new Rhapsody requirements definition.....	22
Automatic allocation of Rhapsody type .....	22
Detection of ‘moved’ elements.....	23
Change concerning of DOORS ‘in-links’ .....	23
Word-SysML example .....	23
Change in initial project configuration.....	23
<b>Gateway 1.1m1 – Build 335.....</b>	<b>24</b>
Support of DOORS 8.0.5 .....	24
DOORS Export Window.....	24
Requirements creation into Rhapsody .....	24
Analysis of Rhapsody models .....	24
<b>Gateway 1.2 – Build 343.....</b>	<b>25</b>
Support of DOORS 8.0.6 .....	25

---

---

Lower rights needed for DOORS modules .....	25
Analysis of Rhapsody models .....	25
<b>Gateway 1.3 – Build 168 .....</b>	<b>26</b>
Support of DOORS 8.1 .....	26
Performances Improvement.....	26
Documentation Improvement .....	26
Navigation from DOORS to Rhapsody.....	26
Support of the Functional C profile .....	26
<b>Gateway 1.3 – Build 175 .....</b>	<b>27</b>
Support of the AUTOSAR profile .....	27
<b>Gateway 1.4 – Build 83 .....</b>	<b>28</b>
Global Improvements.....	28
Improvements of the Requirements Detail view .....	29
Improvements of the Graphical view .....	29
Creation of a new tagging feature .....	30
Update of the AUTOSAR profile .....	30
Support of the Testing profile.....	30
<b>RG 1.4 – Build 137w32 - 138x .....</b>	<b>31</b>
Update of the AUTOSAR profile .....	31
Support of DOORS 8.2 .....	31
CaliberRM Interface .....	31
Rhapsody Gateway Limitations (LINUX) .....	31
<b>RG 1.4m1 – Build 179w32 - 180x .....</b>	<b>32</b>
Support of DOORS 8.3 .....	32
<b>RG 1.5 – Build 581w32 - 580x .....</b>	<b>33</b>
Global Improvements.....	33
Interfaces Improvement .....	37
Documentation Improvements .....	40
<b>RG 1.5 – Build 664w32 - 665x .....</b>	<b>41</b>
DOORS Interface.....	41
Internal Gateway Modification Files .....	41
<b>RG 1.6 – Build 339w32 - 340x .....</b>	<b>42</b>
Documentation .....	42
Rhapsody Interface .....	42
DOORS Interface.....	43
<b>RG 1.6 – Build 352w32 - 354x .....</b>	<b>44</b>
Gateway Kernel .....	44
Rhapsody Interface .....	44
DOORS Interface.....	44
<b>RG 1.7 – Build 18w32 - 19x.....</b>	<b>45</b>
Red Hat Enterprise Linux 5 .....	45

---

---

Eclipse Integration .....	45
Rhapsody Interface .....	45
DOORS Interface.....	45
<b>RG 1.7 – Build 44w32 - 45x .....</b>	<b>46</b>
International Support .....	46
Kernel.....	46
Documentation .....	46
Rhapsody Interface .....	47
DOORS Interface.....	47
<b>RG 7.5 – Build 560w32 - 561x .....</b>	<b>49</b>
Usability Improvements .....	49
DOORS Interface.....	51
Rhapsody interface .....	55
Rhapsody / DOORS Bidirectional Synchronization .....	56
<b>RG 7.5 – Build 570w32 - 571x .....</b>	<b>57</b>
DOORS interface.....	57
Rhapsody interface .....	57
<b>RG 7.5.1 – Build 610w32 - 609x .....</b>	<b>58</b>
Gateway Lite Mode.....	58
Internationalization .....	58
Gateway fixes .....	59
Rhapsody interface .....	59
<b>RG 7.5.1 – Build 627w32 - 628x .....</b>	<b>60</b>
Rhapsody interface .....	60
DOORS interface.....	60
<b>RG 7.5.2 – Build 2788w32 – 2789x.....</b>	<b>61</b>
Global Improvements.....	61
Performance Improvements.....	64
Rhapsody Interface .....	65
DOORS Interface.....	65
Rhapsody / DOORS Bidirectional Synchronization .....	67
<b>RG 7.5.2.1 – Build 2802w32 - 2803x.....</b>	<b>69</b>
Coverage Analysis .....	69
DOORS interface.....	69
XML Tester .....	69
Rhapsody / DOORS Bidirectional Synchronization .....	69
<b>RG 7.5.3 – Build 2958w32 – 2959x.....</b>	<b>70</b>
Performance Improvements.....	70
Rhapsody Interface .....	70
Support of DOORS 9.3 .....	71
DOORS Interface.....	71

---

---

Rhapsody / DOORS Bidirectional Synchronization .....	72
<b>RG 7.5.3.1 – Build 2964w32 – 2965x.....</b>	<b>73</b>
DOORS Interface.....	73
<b>RG 7.6 – Build 1522w32 – 1523x.....</b>	<b>75</b>
Rhapsody interface .....	75
DOORS Interface.....	79
ExcelXML and CsvXML .....	81
<b>RG 7.6.0.1 – Build 1529w32 – 1530x.....</b>	<b>83</b>
Rhapsody interface .....	83
DOORS interface.....	83
<b>RG 7.6.1 – Build 1869w32 – 1870x.....</b>	<b>85</b>
Support of DOORS 9.3.0.4 .....	85
Support of RequisitePro 7.1.3.....	85
Rhapsody interface .....	85
DOORS interface.....	87
<b>RG 7.6.1.1 – Build 1873w32 – 1874x.....</b>	<b>89</b>
Windows 7 installation.....	89
Microsoft Office 2010.....	89
DOORS interface.....	89
Rhapsody / DOORS Bidirectional Synchronization .....	89
<b>RG 7.6.1.2 – Build 1883w32 – 1884x.....</b>	<b>91</b>
Support of DOORS 9.4 .....	91
Rhapsody / DOORS Bidirectional Synchronization .....	91
<b>RG 8.0 – Build 586w32 – 587x.....</b>	<b>92</b>
Global Improvements.....	92
Rhapsody Interface .....	94
DOORS Interface.....	97
Rhapsody / DOORS Bidirectional Synchronization .....	98
<b>RG 8.0.1 – Build 592w32 – 593x.....</b>	<b>99</b>
Support of DOORS 9.5 .....	99
DOORS interface.....	99
<b>RG 8.0.2 – Build 602w32 – 604x.....</b>	<b>101</b>
Rhapsody interface .....	101
<b>RG 8.0.3 – Build 561w32/w64 – 563x.....</b>	<b>103</b>
Global Improvements.....	103
Find Dialog.....	106
Filters .....	106
Definition of default Text Editor .....	107
Microsoft Office 2013.....	107
Support of DOORS 9.5.1 .....	108
New Word Converter .....	108

---



---

Code C#.....	109
Rhapsody interface .....	110
DOORS Interface.....	112
<b>RG 8.0.4 – Build 765w32/w64 – 766x.....</b>	<b>113</b>
Support of DOORS 9.5.1.2 .....	113
Rhapsody interface .....	113
<b>RG 8.0.5 – Build 777w32/w64 – 778x.....</b>	<b>115</b>
General Improvements .....	115
Support of DOORS 9.5.2 .....	115
Rhapsody Interface .....	115
<b>RG 8.0.6 – Build 794w32/w64 – 795x.....</b>	<b>117</b>
Global Improvements.....	117
Support of DOORS 9.5.2.1 .....	118
Rhapsody Interface .....	118
Rhapsody / DOORS Bidirectional Synchronization .....	119
<b>RG 8.1 – Build 523w32/w64 – 524x.....</b>	<b>121</b>
General Improvements .....	121
DOORS Interface.....	123
Rhapsody Interface .....	124
<b>RG 8.1.1 – Build 533w32/w64 – 534x.....</b>	<b>125</b>
Code C, C++ and C#.....	125
Code C AUTOSAR .....	125
Rhapsody interface .....	126
<b>RG 8.1.2 – Build 340w32/w64 – 336x.....</b>	<b>127</b>
General Improvements .....	127
Microsoft Word Viewer .....	129
Code C, C++ and C#.....	130
DOORS Interface.....	130

---



# Preface

---

RG is a full requirements traceability solution, integrated in the Rhapsody environment.

The project to be analyzed must be configured in RG, specifying the nature of files to be processed (Word, FrameMaker, UML analysis tools, Design tools, etc.), their location, links between them and requirements traceability information to be searched for in each of these files.

RG analyzes the documents and produces an image of requirements traceability information in relation to the project as a whole. It is then possible to set reference versions that can be transmitted if necessary to a configuration management tool, and generate analysis documentation in customized formats.

RG provides the following features:

- ◆ a configuration editor for definition of the project graph,
- ◆ converters for importing different kinds of files to be analyzed (DOORS Modules, Word, Excel, FrameMaker files, UML tool files, etc.),
- ◆ an analysis interface in coverage mode, impact analysis mode and Graphic view mode,
- ◆ a filter editor for processing analysis results,
- ◆ a version editor to detect and save requirements changes.

In addition, RG provides for advanced users:

- ◆ a type editor for defining project traceability elements,
- ◆ a template editor for generated documents.

# Gateway 1.0 – Build 1357

---

Initial Release of RG.

Supports Rhapsody 5.2 and Rhapsody 6.0.

## **Provided Interfaces:**

### **Code:**

- ◆ *Code*: Parsing of .c and .h files
- ◆ *C Code*: Semantic analysis of C code, with presentation of functions

### **Office:**

- ◆ *Excel*: Analysis of Excel files (Excel 2000, XP, 2003)
- ◆ *Excel with column numbers*: Analysis of Excel files taking into account columns numbering. (Excel 2000, XP, 2003)
- ◆ *FrameMaker*: FrameMaker files
- ◆ *FrameBook*: FrameMaker books
- ◆ *Interleaf*: Analysis of Interleaf documents
- ◆ *Acrobat PDF*: Analysis of PDF files
- ◆ *PowerPoint*: Analysis of Powerpoint slide shows, (Powerpoint 2000, XP, 2003)
- ◆ *Text*: Analysis of ASCII files
- ◆ *Word*: Analysis of Word files (Word 2000, XP, 2003)
- ◆ *WordXML*: Analysis of XML files (Word2003)

## **Requirement Tools:**

- ◆ *Doors*: Analysis of Doors modules -see the *Coupling Doors.pdf* note (Doors 6.0, 7.0, 7.1)
- ◆ *Doors-Advanced*: Advanced analysis of Doors modules - see the *CouplingDoors.pdf* note (Doors 6.0, 7.0, 7.1)
- ◆ *RequisitePro*: Interface with RequisitePro - see the *Coupling ReqPro.pdf* note (RequisitePro 2003)

**UML:**

- ◆ *Rhapsody*: Interface between the Gateway and Rhapsody

# Gateway 1.0 – Build 1396

---

Release of RG for Rhapsody 6.0 MR1.

Supports Rhapsody 5.2 and Rhapsody 6.0 and 6.0 MR1.

**Improved feature:**

Access to a document using HTTP has been improved. With the previous build, the user was supposed to manually configure Proxy and Server.

With the Build 1396, this configuration is automated.

# Gateway 1.0 MR2 – Build 618

---

Release of RG for Rhapsody 6.0 MR2.

## Improvements of the DOORS interface

The DOORS interface has been improved to support the following features:

- ◆ Successive uploads are now performed without changing the DOORS objectIDs,
- ◆ Rhapsody **Tags** and DOORS **Attributes** are fully managed,
- ◆ Rhapsody **Description** fields are now inserted in DOORS also for diagrams.

## Changes in the Main Window

### Features for collaborative work

#### Restricted access to project configuration

User (or project manager) can now define a restricted access for the customization of the project.

The **Options** editor (**Tools > Options**) can be used to define a password.

Access to project configuration is granted only if the Password is correct.

#### Management of concurrent access

In addition to the restricted access (password) capability, we added the management of concurrent access to the project configuration files (Project, Types, Filters, Options):

The first user can access to the project configuration. Password can be requested for this.

If another user wants to access the configuration window, and if the first user still has this window opened, the second user has the following options:

[*Read-Only*] gives an access to the project configuration windows, but no change is allowed.

[*Notify*] gives an access to the project configuration windows, but no change is allowed. In addition, when the first user closes the configuration window, the other user will receive the notification.

## Display of requirement types and reference types

Gateway allows you to define several kinds of requirements, attributes, sections, references,...

Gateway 1.1 now displays this information in the main window.

## 'Reload all' action

A new menu item **Reload all** (shortcut = [Ctrl]+[F5]) forces Gateway to re-analyze all the project elements and to re-build the analysis results.

This action is equivalent to what was performed by pressing [Shift] before selecting the **Reload** menu item in previous releases.

## 'Messages' tab

The 'Messages' tab of Gateway 1.0 has been replaced by a log file which can be accessed using the [View log file] button in the Options editor.

# Changes in the Configuration windows

## Project Editor

### Improved HTTP access

Access to a document using HTTP has been improved. With the previous release, the user was supposed to manually configure Proxy and Server.

With Gateway 1.1, this configuration is automated: Gateway re-uses the Microsoft Windows definition of 'Internet Options' by the user (**Configuration panel > Internet Options > Connections** tab > **LAN** parameters...)

### Dropdown list for variable values

Some types of analysis applied to a document in the project configuration may need definition of complementary variables.

Some variables are filled dynamically during the selection of the **File or Directory**, or captured automatically from the installed configuration. Other variables have to be defined by the user, i.e.:



- ◆ ‘Language’, for Rhapsody UML (C, C++, Ada...)
- ◆ ‘Diagrams Capture’ for Word, Rhapsody, Simulink,... (Yes / No)
- ◆ ...

Now these **Values** are proposed in a dropdown list.

## Types Editor

### Improved Analysis of multiple Word files

A new **Multi Word** type is now available.

The **Code** converter was already has the capability to browse directories and present you a sub-directories and files hierarchy.

The filters field in the advanced properties of the type has already the capability to analyze several documents (Word or others) but was presenting them as merged in a single large document.

The new **Multi Word** type gives you a very powerful view of several Word documents in a directory with subdirectories. User can select this type and apply it to a *document* in the **Project Editor**, then is has to select the proper directory (field File or Directory).

The analysis presents the directory, with subdirectories if any, then each document in these directories is presented individually.

### Access to the Regular Expression Tester

In the Types Editor, the button opening the regular expression tester has been added for **Text** elements:

### Drag & Drop between types

Drag & Drop capabilities have been improved to facilitate type customization. User can drag & drop elements from a default or customized type to another. Keeping the [Ctrl] key pressed during this operation duplicates the selected object instead of just moving it.

### Filters Editor

A **Comment** tab has been added in the Filters editor. It allows you to fully describe the actions performed by the filter. These comments can of course be included in a generated document.

## Snapshots Editor

### Increased detection of changes concerning references

Changes in references are now presented in the Snapshots Editor.

## Options Editor

### Password

A 'Password' field has been added, as already described for project protection.

### Access to the log file

The '**Debug**' option and the **Messages** tab of the main window have been replaced by a log file, which can be accessed by clicking [View log file] in the Options editor. The log file `log.txt` is saved in the project directory, the menu item **File > Open Project Directory** can be used in this case.

## Reports Generation

The reports that can be generated by Gateway are now organized with a hierarchy.

Default document templates are provided under a menu *Library*.

Document templates specific to a given project are presented in other menus, for example Project Docs in the screenshot below.

## Support of Chinese and Japanese documents

Gateway can now analyse and present requirements and traceability information contained in Chinese or Japanese documents.

# Gateway 1.1 – Build 742

---

Release of RG for Rhapsody 6.1.

## Simulink Interface

Gateway now includes a Simulink type allowing to analyze Simulink models and to link them with work performed in Rhapsody.

This interface comes with a Simulink example and a coupling note.

### IMPORTANT

This interface needs a license “feature”: If you got Gateway before 1.1 release, please contact IBM Support Team to upgrade your license key.

## Gateway files can be managed using Rhapsody CM capabilities

Gateway files are now stored under the \_rpy subdirectory of the Rhapsody project.

They can be managed as “controlled files” in order to get benefits from Rhapsody configuration management capabilities.

## Option “1 module per package” for DOORS

The Doors export window now contains an option which leads Gateway to create 1 Doors module for each Rhapsody package during the export.

## Support of SysML and DoDAF Profiles

Gateway supports Rhapsody 6.1 extended capabilities for SysML, DoDAF and other profiles. 2 dedicated types of analysis are now available: Rhapsody SysML and Rhapsody DoDAF.

## Improved management of requirements creation

Management of requirements created in Rhapsody by Gateway has been improved:

- ◆ To allow selection of the specifications document containing requirements to create,
- ◆ To define the location of the created requirements package.

## Improved Documentation & Examples

User Manual has been split in 2 documents:

A *User Manual* containing the information for operational use of Gateway on projects: project definition, notions and concepts, ratio calculations,... This document is organized as a reference manual.

A *Customization Guide*, for advanced users and/or internal support teams, explaining how to customize Gateway types in order to provide users with predefined types supporting the Corporate standards for requirements traceability. This document is organized as a step by step tutorial, with direct links to animated demos and targeted examples.

These documents are located in `<install directory>\doc`.

More examples are installed with Gateway:

Examples showing how Gateway analyzes Word documents, Excel, Powerpoint, FrameMaker, Visio, Simulink, Code files,... All these examples are located in `<install directory>\examples`.

Examples supporting the step by step tutorial (*Customization Guide*), and animated demos. All these examples are sub-directories of the `<install directory>\doc` directory.

Coupling Notes are explaining all characteristics of Gateway interfaces with third-party tools and Rhapsody itself. These notes are located in `<install directory>\doc` and named *Coupling <tool>.pdf*.

# Gateway 1.1 – Build 743

---

Release of RG for Rhapsody 6.1.

## Extended Rhapsody Types Definitions

Definition of Rhapsody types of analysis in Gateway was omitting some combination of elements in the Rhapsody model. This release solves this issue.

An additional security level has also been integrated, to allow export of high level requirements into Rhapsody even if Gateway displays errors for Rhapsody analysis.

# Gateway 1.1m1 – Build 319

---

Release of RG for Rhapsody 6.1 MR1.

## Support of DOORS 8.0

Gateway supports DOORS 8.0.0 (initial release of DOORS 8.0, not patched).

At the date of release, Patch 3 for DOORS 8.0 is not supported.

Gateway still complies with DOORS 7.1 and DOORS 6.

## Support of new Rhapsody requirements definition

Rhapsody requirements can be defined using **ID** and **Specification** fields, in addition of the already existing **Name** and **Description**.

Gateway is modified to use these fields as follows:

Requirement **ID** captured by Gateway goes to the Rhapsody **ID** field for requirement,

Requirement **Text** captured by Gateway goes to the Rhapsody **Specification** field for requirement

**Display text** defined for the captured requirement goes to the Rhapsody **Name** for requirement: if **Display text** in Gateway is the ID (**Display Text** field left empty), both **Name** and **ID** fields in Rhapsody will contain the ID info

For Rhapsody elements (Requirements created from Rhapsody,...), the **Specification** field is now captured instead of the **Description** one.

## Automatic allocation of Rhapsody type

From a Rhapsody project, first launch of Gateway will automatically create a Gateway project and will automatically allocate the type of analysis:

- ◆ **RhapsodySysML** for a SysML project
- ◆ **RhapsodyDoDAF** for a DoDAF project
- ◆ **Rhapsody** for other projects

## Detection of ‘moved’ elements

Gateway was already showing **Deleted**, **Added** and **Modified** elements between successive analyses.

Gateway now detects and presents **Moved** objects, when objects have been relocated in their browser tree.

## Change concerning of DOORS ‘in-links’

Gateway was previously forcing deletion of in-links in order to allow deletion of objects in DOORS during the synchronisation (upload) action.

This feature has been modified: The synchronisation stops, and information window appears, when Gateway tries to delete a DOORS object with in-link. The in-link has to be deleted in DOORS before running a new synchronisation.

## Word-SysML example

The example used to demonstrate requirements management between Word requirements and a SysML model is now included in the package (`Samples` subdirectory).

## Change in initial project configuration

The initial configuration created automatically from a brand new Rhapsody project was integrating a DOORS ‘document’, introducing confusing DOORS login windows even if DOORS was not installed. This has been changed: now Gateway creates only a project including the Rhapsody model.

# Gateway 1.1m1 – Build 335

---

Release of RG for Rhapsody 6.1 MR2.

## Support of DOORS 8.0.5

Gateway supports DOORS 8.0.5.

DOORS 8.0 releases with previous patches are not supported.

Gateway still complies with DOORS 7.1 and DOORS 6.

## DOORS Export Window

Selection of what is to be exported into DOORS (what folders to use, what types to export) is now saved and directly available over several sessions.

## Requirements creation into Rhapsody

Gateway presents a more intuitive error message when package naming captured from the requirements tool is not accepted by Rhapsody (it was already existing for problems in requirements naming).

Requirements are no more deleted then re-created when their label (name) is changed. If the ID does not change, the requirement previously created in Rhapsody is just updated.

Gateway reports a “modified requirement” even if only a tag value has been changed.

## Analysis of Rhapsody models

Improvements for better support of DoDAF and SysML models.



# Gateway 1.2 – Build 343

---

Release of RG for Rhapsody 6.2.

## Support of DOORS 8.0.6

Gateway supports DOORS 8.0.6.

DOORS 8.0 releases with previous patches are not supported.

Gateway still complies with DOORS 7.1 and DOORS 6.

## Lower rights needed for DOORS modules

The Gateway users no more need to have modification rights on the DOORS module containing requirements. Read access rights are only requested.

## Analysis of Rhapsody models

Improvements for better support of DoDAF and SysML models.

# Gateway 1.3 – Build 168

---

Release of RG for Rhapsody 7.0 & 7.0 MR1.

## Support of DOORS 8.1

Gateway supports DOORS 8.1.

Gateway still complies with DOORS 8.0.6, DOORS 7.1 and DOORS 6.

## Performances Improvement

Rhapsody Gateway now uses a DLL based solution to get information from Rhapsody. Analysis time is dramatically reduced.

## Documentation Improvement

The documentation (*User's Manual*, *Customization Guide*) has been entirely reviewed, and a *Getting Started* document is now available.

## Navigation from DOORS to Rhapsody

Rhapsody Gateway install a feature in the RG menu in DOORS that allows direct navigation from DOORS to Rhapsody, if the DOORS object is an image of a Rhapsody object created Gateway.

## Support of the Functional C profile

A new type “Rhapsody Functional C” has been added to support the FunctionalC profile.

# Gateway 1.3 – Build 175

---

Release of RG for Rhapsody 7.0 MR2 & 7.0 MR3.

## Support of the AUTOSAR profile

A new AUTOSAR type has been added to support the Rhapsody AUTOSAR profile.

# Gateway 1.4 – Build 83

---

Release of RG for Rhapsody 7.1.

## Global Improvements

### Marks extend the scope of requirements change management, comments...

- ◆ You can use Marks to manage requirements changes and impact analysis, or to quickly analyze input documents:
- ◆ Automatic and persistent highlight of modifications
- ◆ Automatic highlight of search results
- ◆ Creating your own marks
- ◆ Using Marks in Filters

### DOORS Analysis

- ◆ You can now manage in the project configuration DOORS requirements modules for which you only have “Read” access rights.
- ◆ You can now specify the DOORS Baseline you want to analyze.
- ◆ You can now specify the DOORS Server you want to use, thanks to a new variable.

### Extended management of references to consider the source document

- ◆ References capabilities have been extended to handle some ambiguities on requirement IDs: Rhapsody Gateway can now distinguish between references to requirement with the same IDs if user also indicates the name of the document containing the requirement (I.e. *Covers:REQ1(SRS1)* vs *Covers:REQ1(SRS2)*).

### Creation of traceability information within Rhapsody Gateway

You can use the new *Types for added element* if you want to provide project users with advanced capabilities of information creation from Rhapsody Gateway.

- ◆ Creation of a Type for Added elements

- ◆ Declaration of requirements you want to modify
- ◆ Include Types for added elements in your project configuration
- ◆ Add information to the project analysis results

## Reports Generation

- ◆ Tables can now be adapted dynamically depending on the number of documents you select for reports generation,
- ◆ The EXCEL format is now available for Generation
- ◆ Direct access to the Snapshots information
- ◆ The groups of documents can be renamed in the Reports Editor.

## Improvements of the Requirements Detail view

- ◆ Columns can be resized, moved,
- ◆ You can sort the results using the attribute values, the IDs,... by clicking the column headers,
- ◆ You can copy-paste attribute values from this view,
- ◆ The Requirement Details view supports management of attributes added from Rhapsody Gateway through **Types for Added Elements** capabilities.
- ◆ In the Requirement Details view, you can re-sort the requirements in the same way they are captured from the source document, by using the new “Sort by default” menu item.
- ◆ A new “Added text” pane allows you to add some text to the requirement text captured from the document. To activate this feature, your document is supposed to be declared as “modifiable”, that means you need to associate a modification document with a type for added element.
- ◆ You can re-sort the requirements in the same way they are captured from the source document, by using the new “Sort by default” menu item.

## Improvements of the Graphical view

- ◆ The Graphical view now displays links (in addition to references)
- ◆ Documents can be easily resized and re-positioned,
- ◆ Document trees can be expanded or collapsed,
- ◆ If you defined **Types for Added Elements**, you can add any kind of reference (coverage links) or links from the Graphical view

◆ ...

## Creation of a new tagging feature

This feature allows identifying requirements in a Word document where the requirements have no explicit IDs. This new tagging feature also manages iterations.

## Update of the AUTOSAR profile

An update of the existing AUTOSAR type has been added to support the Rhapsody new AUTOSAR profile.

## Support of the Testing profile

A new Testing type has been added to support the Rhapsody Testing profile.

# RG 1.4 – Build 137w32 - 138x

---

Release of RG for Rhapsody 7.1.1 & MR1 (Windows & Linux).

## Update of the AUTOSAR profile

The AUTOSAR type has been updated according to Rhapsody 7.1.1.

## Support of DOORS 8.2

Gateway supports DOORS 8.2.

Gateway still complies with DOORS 8.x, DOORS 7.1 and DOORS 6.

## CaliberRM Interface

Gateway now includes a CaliberRM type allowing to capture requirements from CaliberRM and to link them with Rhapsody design.

This interface comes with a CaliberRM example and a coupling note.

### IMPORTANT

This interface needs a license “feature”: If you got Gateway before 1.4 release, please contact IBM Support Team to upgrade your license key.

## Rhapsody Gateway Limitations (LINUX)

Gateway release on Linux does not support:

Capture diagram option for Rhapsody models.

Navigation to Doors option.

We will do our best to add those features in the following MRs.

# RG 1.4m1 – Build 179w32 - 180x

---

Release of RG for Rhapsody 7.1.1 MR2 (Windows & Linux).

## Support of DOORS 8.3

Gateway supports DOORS 8.3.

Gateway still complies with DOORS 8.x, DOORS 7.x and DOORS 6.



# RG 1.5 – Build 581w32 - 580x

---

## Global Improvements

### Undo Redo Capability

It is now possible to undo and redo edition in RG project creation. You can cancel or redo actions on element editions (Attributes, Reference Attributes, Coverage links creation ...).

Those new features are accessible from the Menu: **Edit > Undo/Redo**.

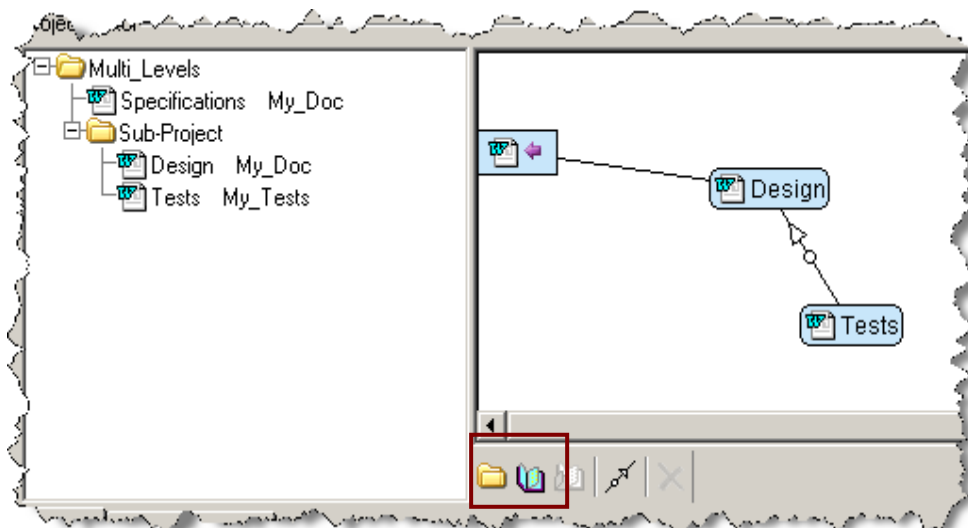
You can also use keyboard shortcut:

**Undo:** <Ctrl> + <Z>

**Redo:** <Ctrl> + <Y>

### Folder: Internal Coverage Link

Even if it is better to consider a folder as a package of requirement that belong to the same project hierarchy level, for some corner cases it is useful to add coverage links inside a Folder. This feature is directly accessible from the project configuration window.



## Multi-User Enhancement

The control access on Rhapsody Gateway project edition is now handled separately on each of the following activity:

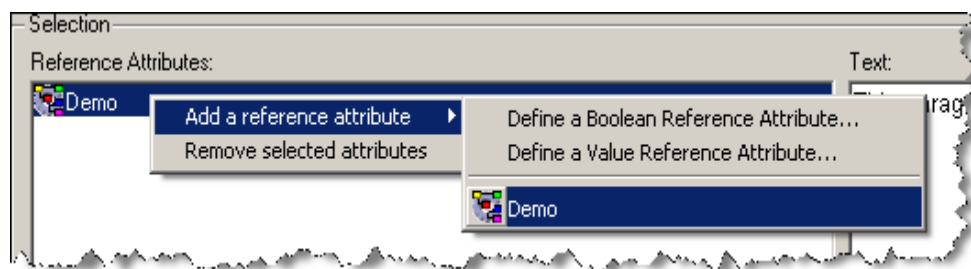
- ◆ Project Configuration Edition
- ◆ Types of Analysis Customization
- ◆ Filters Edition
- ◆ Marks creations
- ◆ Added Information such as:
  - Traceability Data
  - Attributes
  - Added Text, Comments...
- ◆ Modification Files Edition

## Add Reference Attributes in the Graphical View

It is now possible to add reference attributes in Rhapsody Gateway Graphical View.

You can specify and add reference attributes by following these steps:

1. Select the reference in the graphical view.
2. Right click in the Reference Attributes box.
3. Specify a valuable or Boolean Attribute.
4. Add a reference attribute.



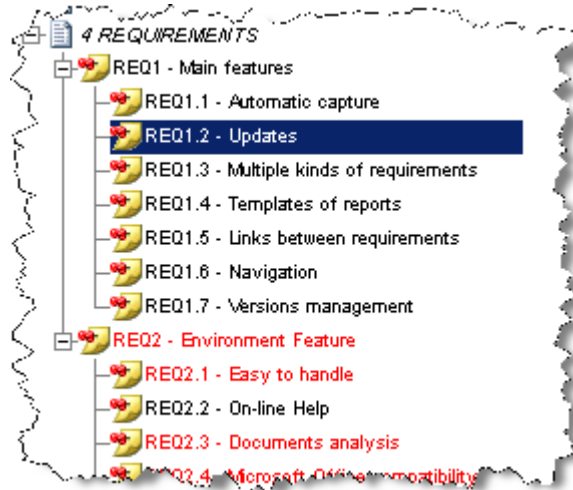
## Requirement Hierarchy

It is now possible to create a hierarchy of requirements. To handle such hierarchy you have two different alternatives:

1. Use the End regular expression field in the requirement type customization view.

2. Create requirement element hierarchy in the type of analysis as it shown in the following picture.

You can specify accurate rules for coverage calculation depending on user choice.



See also: \examples\Use Cases\Requirement Hierarchy.

## HTML Document Generation

We changed the CSS (Cascaded Style Sheet) associated to default html template. Feel free to create your own one for improving your final HTML report.

## Zoom In and Zoom Out

It is now possible to zoom in and out the project configuration view and all the captured diagrams.

You can change the diagrams and project configuration size by following these steps:

1. Put the pointer into the diagram zone.
2. Hold <Ctrl> key.
3. Use the mouse scroll button.

It is still possible to perform this action on the Graphical View for impact analysis.

## Picture Handling

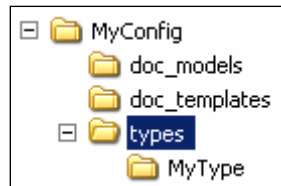
RG is now able to handle diagram and images from PNG file format. It means that you are now able to capture PNG, WMF, EMF (Only available for Windows), SVG, and BMP.

## Add Several Config Directories

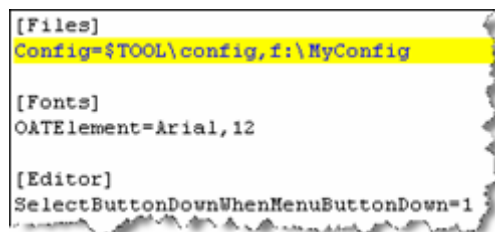
It is now possible to add several config directories in order to add customized data as Types of analysis, Doc templates, Doc reports, Otscrip files, ...

You can add those configuration directories by following those steps:

1. Create your own config directory with the same sub-directory hierarchy that in the original Config directory.



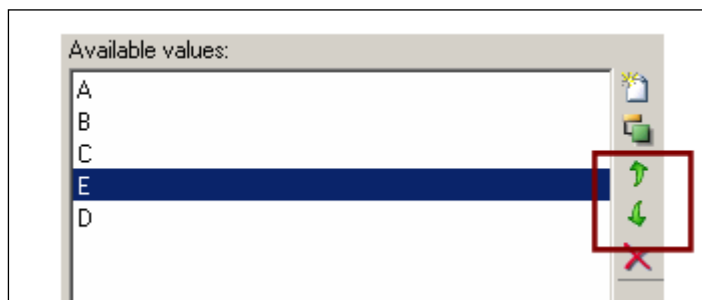
2. Edit RG.ini file by adding the new config directory path as specified in the picture below:



3. Re-launch the tool.

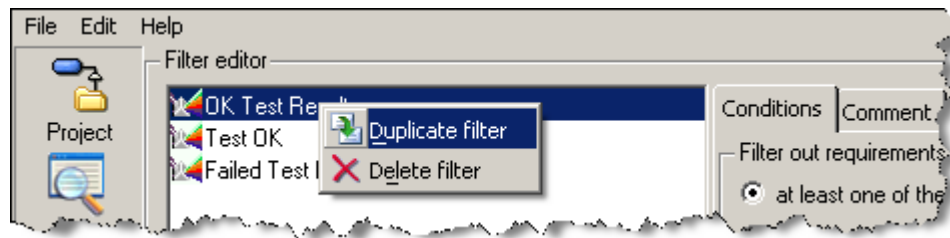
## Re-order Attributes

It is now possible to reorder the different values in the Attributes Values tab. To reorder the attributes values you can use the Up and Down arrows like depicted just below:



## Duplicate Filters

Reuse existing filters as a starting template of a filter edition is now possible. To use this functionality go into the Filter Edition Tag and right click on the filter you want to duplicate as describe in the picture just below:



## Interfaces Improvement

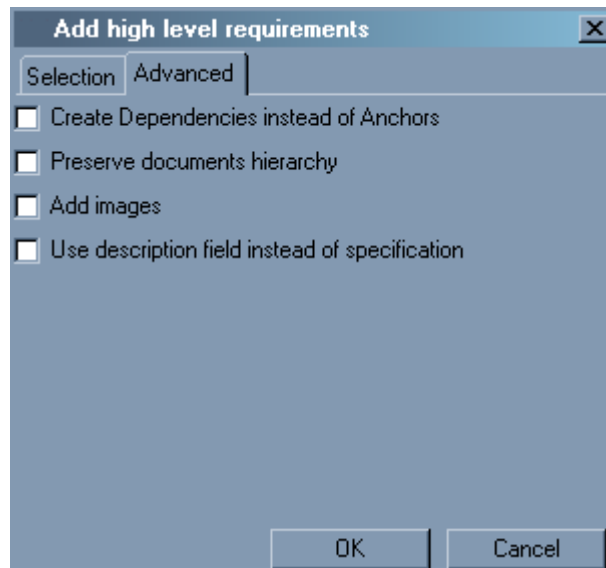
### Rhapsody Interface

#### Find high level requirement in Rhapsody

It is now possible from RG to locate directly in the Rhapsody model a previously imported Requirement just by using the “Find high level requirement in Rhapsody” in the Tools Menu Options.

#### Requirement synchronization enhancement

It is now possible to customize requirements synchronization with the Rhapsody model by enabling options located in the Add high level Requirements/Advanced tab Menu.



See Coupling Rhapsody Manual.

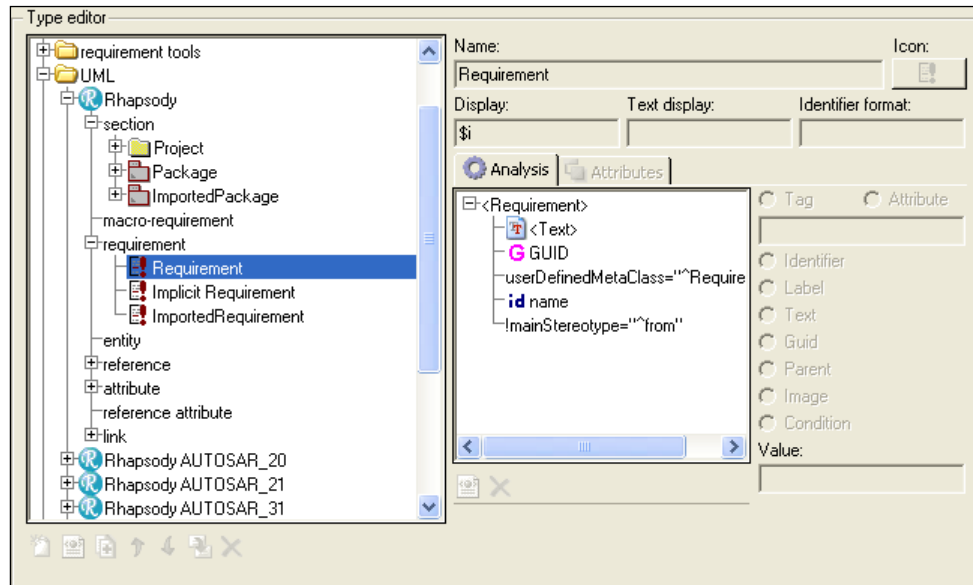
## Considering Other Profiles

It is now possible to automatically create Rhapsody Types of analysis according to users profiles.

See Coupling Rhapsody Manual.

## XML Type Analysis

Rhapsody Models are now analyzed with an XML based type of analysis.



## EXCEL Interface

### Excel Document Generation

It is now possible to select the location of the content that is generated by RG in the excel document template. By default the location of the start of the generated data is cell A1.

You can change this location by following these steps:

1. In Excel select **Insert > Name > Define...**
2. Select <START\_REPORT> name
3. Set the new Cell Value
4. Select **File > Save**

## Excel Spreadsheet

It is now possible to specify several spreadsheets for an Excel document analysis.

Variable	Value
Worksheet	Sheet1,Sheet2

## Word Interface

It is now possible to specify several options (variables) on Word document analysis.

You can enable or disable options value in the project configuration view.

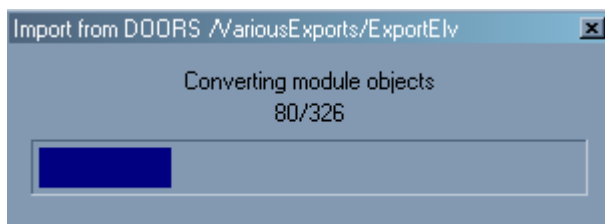
Variable	Value
With Character styles	<input checked="" type="checkbox"/>
With images	<input type="checkbox"/>
With Character styles	<input type="checkbox"/>
With Bookmarks	<input type="checkbox"/>
With Annotations	<input type="checkbox"/>
One Cell Per Line	<input type="checkbox"/>

- ◆ **With images** option will give you the capability to capture images in Word document.
- ◆ **With Character styles** option will convert lines that are using character styles.
- ◆ **With Bookmarks** option will convert the bookmarks content.
- ◆ **With Annotations** option will convert annotations content.
- ◆ **One Cell Per Line** option gives you the choice to add a carriage return between each column of a table.

## DOORS Interface

Support of DOORS 8.1, 8.2 and 8.3.

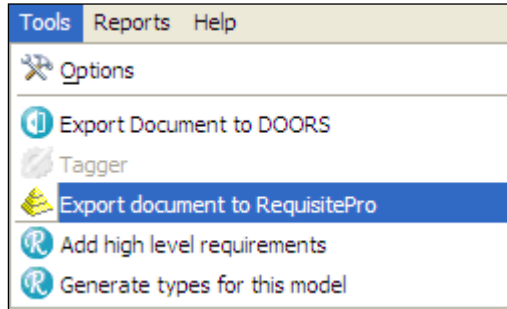
Performances have been improved between DOORS and Rhapsody Gateway.



## REQUISITE PRO Interface

It is now possible to send back elements to RequisitePro by using a dedicated exportation window.

This option is accessible from the **Tools > Export document to RequisitePro** menu:



As a result you will have to add information in the **Export document to reqpro** window:

1. Enter your login and password to access the RequisitePro database.
2. Select the targeted Package or create a new one in your RequisitePro Project.
3. Specify RequisitePro requirement Prefix.
4. Select element categories that has to be exported (Default: All).
5. Click on Export Button

## FRAMEMAKER 8 Support

RG is now supporting Framemaker 8.

# Documentation Improvements

## Customization Guide

A new section has been added for customization of report template.

See *Customization Guide*.

## RG Coupling Document

This document has been updated significantly for Rhapsody ~ DOORS Synchronization use cases.



# RG 1.5 – Build 664w32 - 665x

---

Release of RG for Rhapsody 7.2 MR1 (Windows & Linux).

## DOORS Interface

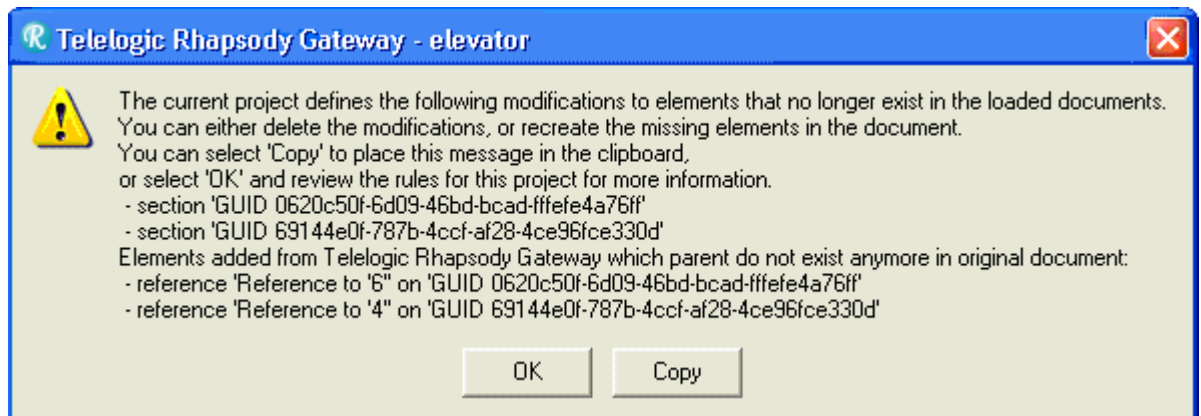
Improvements on UNICODE support (Chinese, Japanese, Korean, Russian, ...).

## Internal Gateway Modification Files

A new format for added modification files has been introduced in RG 1.5.

Added element modification files from RG 1.4 and earlier need to be upgraded.

If you encounter the issue presented in the following dialog:



Please contact the IBM Support Team to obtain an upgrade procedure.

# RG 1.6 – Build 339w32 - 340x

---

Release of RG for Rhapsody 7.3 (Windows & Linux).

## Documentation

Important document updates:

- ◆ Word and DOORS tutorials updated,
- ◆ Manuals and Coupling notes updated,
- ◆ Introduction of the “Best Practices” guide.

## Rhapsody Interface

UNICODE support now extended to elements labels and specification field.

Important fixes concerning CKTJ (Chinese, Japanese, Korean,...) support.

Support of Rhapsody projects lists.

Detailed error reporting in Add high level requirements feature.

New options introduced:

- ◆ With stereotypes applied: enables output of all stereotypes in the intermediate file.
- ◆ Stereotype selection for Dependencies in ‘Add High Level Requirements’ advanced tab.

## MODAF Profile

New Rhapsody MODAF type introduced to support analysis of models with MODAF profile.

## DOORS Interface

Support of DOORS 9.0.

Gateway still complies with DOORS 6.1, DOORS 7.1 and DOORS 8.x.

The Doors type based on Text analysis has limited functionalities and does not include the UNICODE enhancements.

Usage of XML types such as Doors Basic or Doors Advanced types is encouraged.

# RG 1.6 – Build 352w32 - 354x

---

Release of RG for Rhapsody 7.3 MR1 (Windows & Linux).

This maintenance release contains important fixes on the Rhapsody Gateway kernel, Rhapsody and DOORS coupling.

## Gateway Kernel

A reload Rhapsody model issue related to GUID support and inverse cover links has been fixed.

Restoration of multiple choices settings for documents was fixed (such as Sources and Types unchecked in Export to DOORS dialog).

The following internal errors were fixed:

- ◆ 10136
- ◆ 10193

## Rhapsody Interface

Support of target package with a label different to the name has been added to the Add high level requirements functionality.

## DOORS Interface

Error handling in export to DOORS has been improved.

# RG 1.7 – Build 18w32 - 19x

---

Release of RG for Rhapsody 7.4 (Windows & Linux).

## Red Hat Enterprise Linux 5

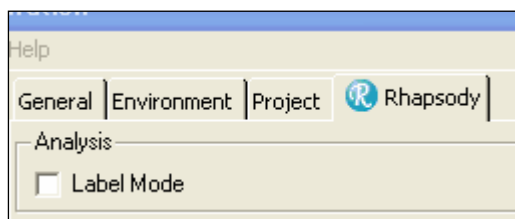
RG 1.7 is now supported on Red Hat Enterprise Linux 5.

## Eclipse Integration

RG can now be invoked from the Eclipse Integration of the Rhapsody Modeler.

## Rhapsody Interface

A new Rhapsody tab has been added the option editor.



The new 'Label Mode' allows the user to control whether element name or label of Rhapsody element should be imported into Gateway.

## DOORS Interface

Support of DOORS 9.1.

Gateway still complies with DOORS 6.1, DOORS 7.1, DOORS 8.x and DOORS 9.0.

Performance of DOORS module import has been improved on links to other modules reading.

# RG 1.7 – Build 44w32 - 45x

---

Release of RG for Rhapsody 7.4 MR1 (Windows & Linux).

## International Support

Rhapsody Gateway can now be installed in a directory having Japanese or other eastern characters.

## Kernel

Fixed loss of consecutive carriage returns problem. This was causing some requirements to be permanently modified with Add high level requirements to Rhapsody.

XML type editor was fixed to not corrupt the types file when a bad attribute name is entered.

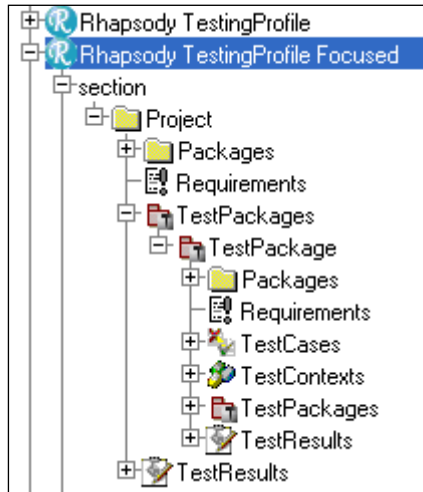
## Documentation

Coupling Rhapsody and Coupling DOORS have been updated.

Customization Guide documentation now describes the available variables in Display fields.

## Rhapsody Interface

The type Rhapsody TestingProfile Focused is provided as a dedicated solution to only analyze and export tests related information from an UML model.

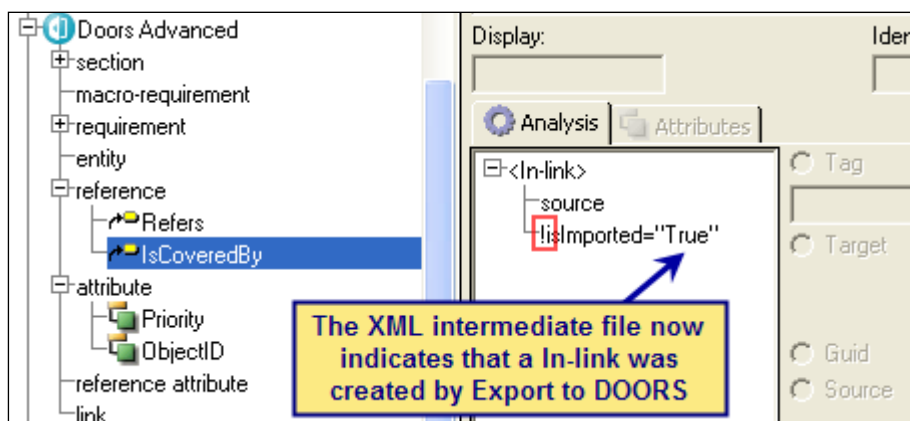


Add high level requirements to Rhapsody feature received some modifications:

- ◆ Created stereotypes are now applicable to Requirement, Package and Dependency instead of ModelElement,
- ◆ The stereotype of Dependencies created by the Gateway is synchronized according to the Add high level requirements configuration.

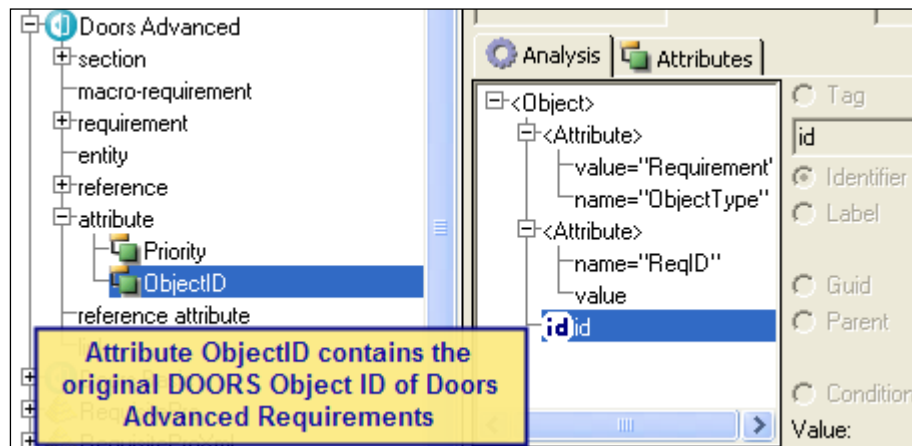
## DOORS Interface

The links previously Exported to DOORS are no longer duplicated as inverse cover link (IsCoveredBy) when using the Doors Advanced type.



The Export process has been improved to delete old links before removing the old elements in order to avoid errors.

Navigation from DOORS has been improved. A hidden attribute ObjectID was added to the Doors Advanced type in order to enable the inverse navigation.





# RG 7.5 – Build 560w32 - 561x

---

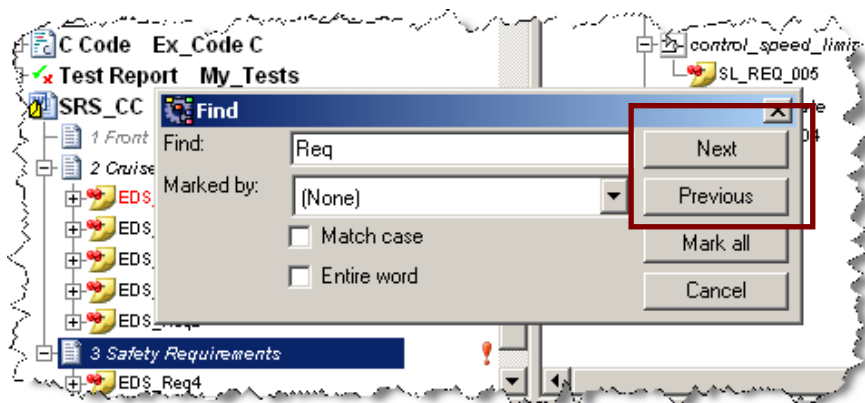
Release of RG for Rhapsody 7.5 (Windows & Linux).

## Usability Improvements

### Find Previous/Next

It is now possible to jump to forward and backward elements during Find operation. Two dedicated “Next” and “Previous” search buttons are available in the Find Window.

Those new features are accessible from the Menu: **Edit > Find/Find Next/Find Previous**.



You can also use the following keyboard shortcuts:

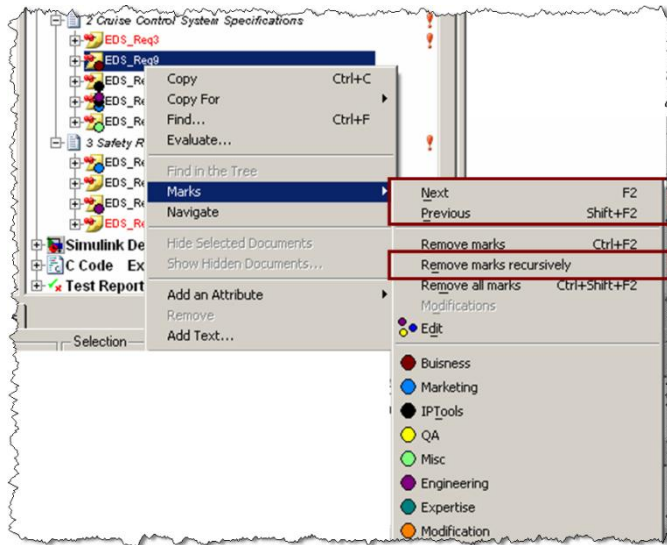
- ◆ **Find:** <Ctrl> + <F>
- ◆ **Next:** <F3>
- ◆ **Previous:** <Shift> + <F3>

### Marks enhancements

It is now possible to jump from one Mark to another in both backward and forward directions. You can use contextual menu as it is describe in the picture just below or by using the following keyboard shortcuts:

- ◆ **Next:** <F2>

- ◆ **Previous:** <Shift> + <F2>

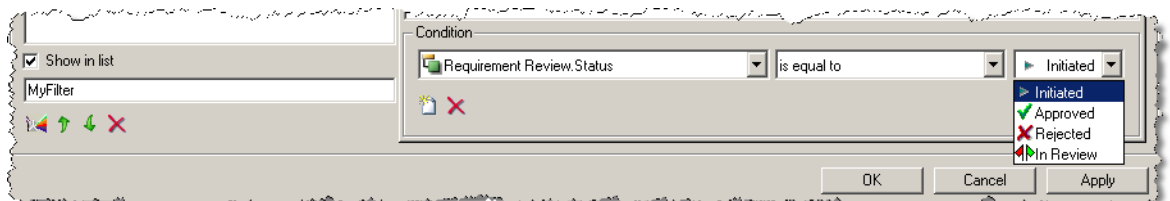


To avoid Rhapsody Gateway users to spend too much time and effort in the painful task of removing one by one hierarchical marks we added a new capability of removing a mark and all their children in one click, thanks to “Remove marks recursively” option.

## Filters enhancements

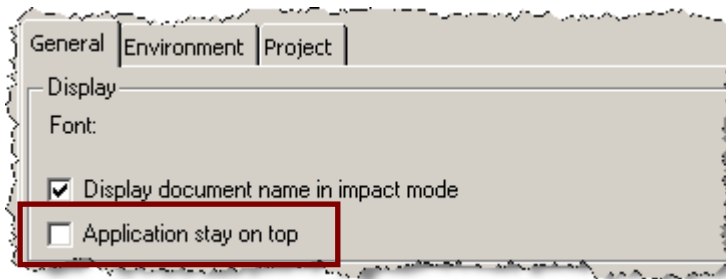
Rhapsody Gateway enhances filtering capabilities by increasing elements number where users can create conditions on. All those new elements are accessible from the Filter editor window by adding specific conditions on elements like:

- ◆ Single Requirement Type
- ◆ Single Reference Type
- ◆ Enumerated attribute values



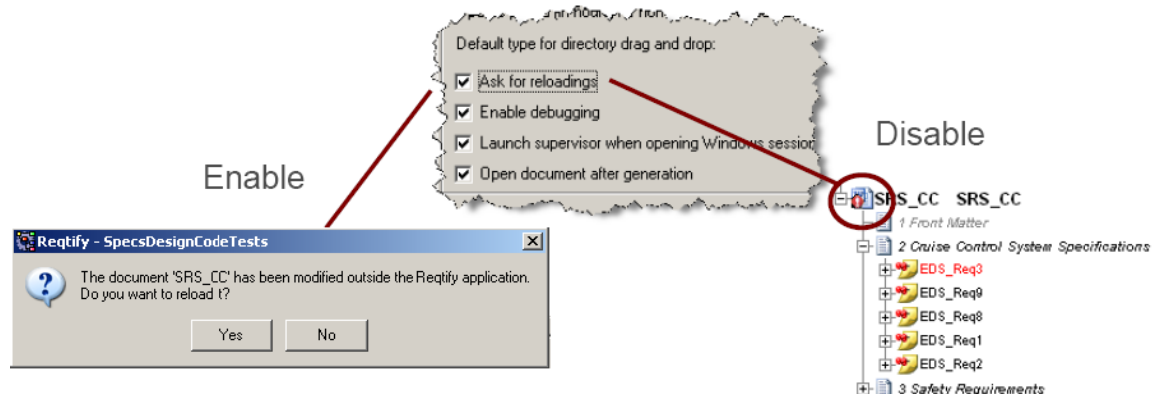
## Always on Top

It is now possible to put Rhapsody Gateway on top of all the other applications on your desktop. As a result it is a question of choice to use Rhapsody Gateway as your project monitoring tool during your everyday work and make it always visible and quickly accessible. Rhapsody Gateway users can enable/disable “always on top” option in the option tab accessible from the main project configuration window.



## Ask for Reloading

Remember how it was painful to see this popup window appearing asking you if you would like to reanalyze a document as soon as a single element as been modified. Thanks to Rhapsody Gateway it is now possible to block this popup window. As a result a dedicated icon will inform users if a document is up to date or not. This document analysis can be done later on user demand with a simple reload action on the document.



## Snapshots comparison enhancements

A snapshot comparison feature is able to give you in one click all the differences between at least two project milestones on requirement modifications (and their attributes) and traceability data. You can now also see the differences on reference attributes and hide hidden attributes from the analysis.

## DOORS Interface

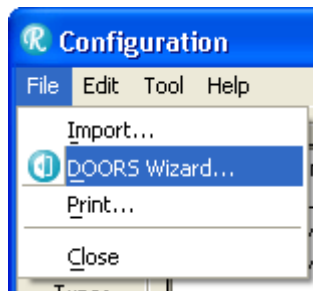
Support of DOORS 9.2.

Gateway still complies with DOORS 6.1, DOORS 7.1, DOORS 8.x and DOORS 9.x.

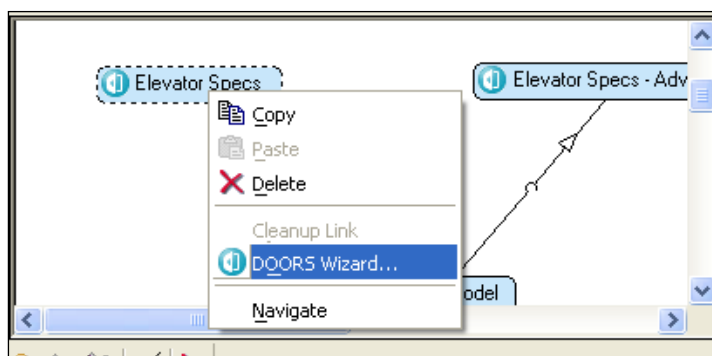
## DOORS Type Builder Wizard

A new DOORS Type builder wizard was introduced in the Rhapsody Gateway Project editor.

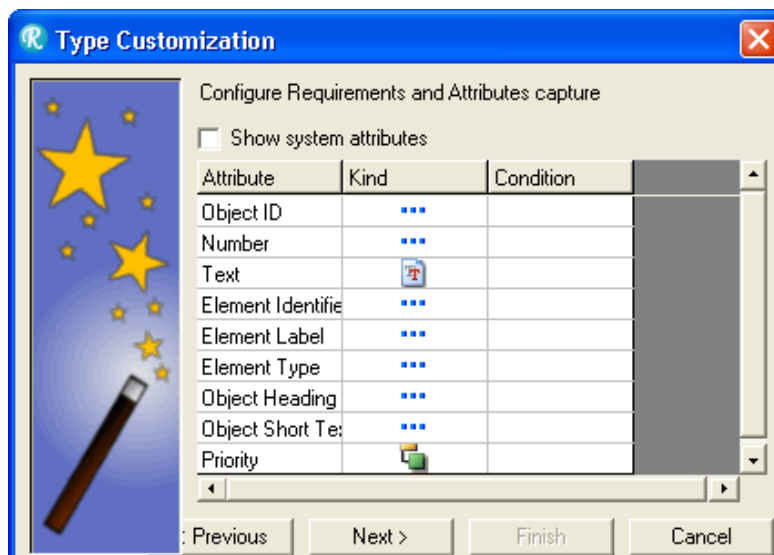
It can be invoked from the File menu when you want to import a new DOORS document:



It can be also invoked on an existing DOORS document using the pop-up menu in the project graph:

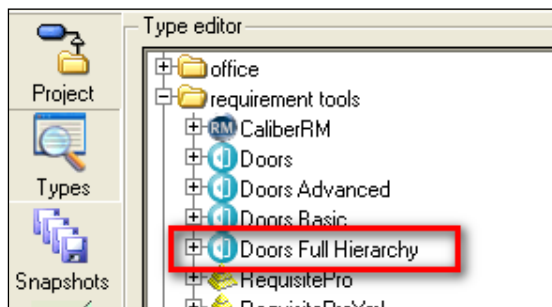


This wizard allows customization of DOORS types (XML ones) based on existing and recommended analysis features applied on attributes from DOORS objects.

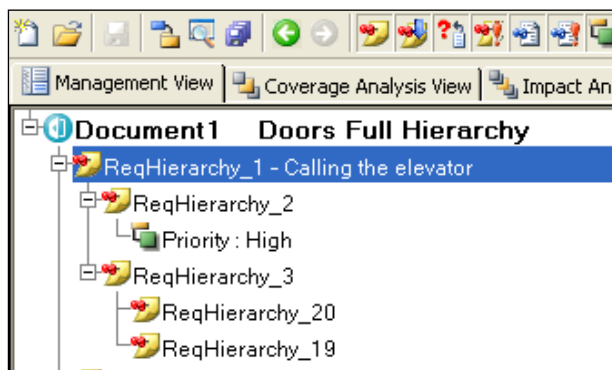


## Doors Full Hierarchy Type

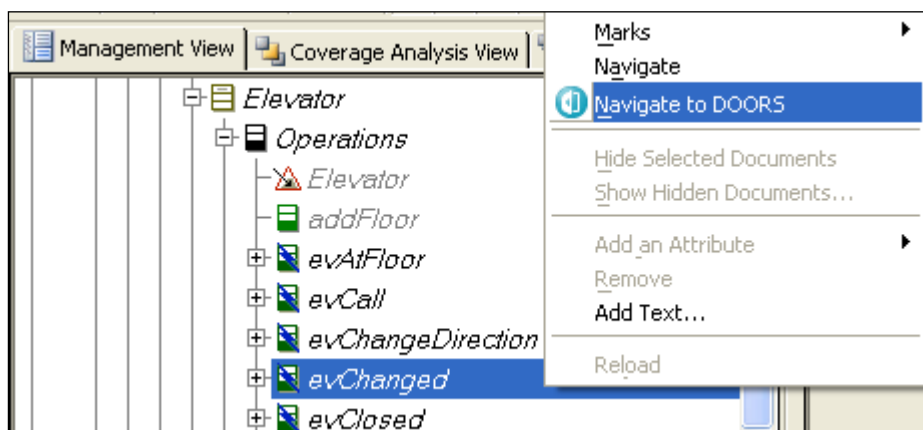
A new DOORS type of analysis is available:



This new type is suitable when the DOORS module analyzed doesn't allow a clear identification of Sections and Requirements. The whole DOORS Object hierarchy is captured as a Requirement hierarchy in Rhapsody Gateway:



## Navigate to exported Element in DOORS

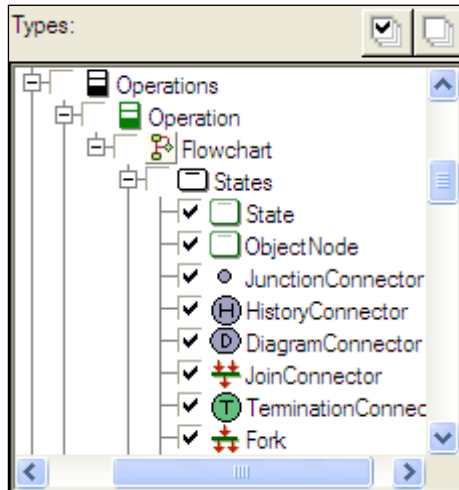


## Export to DOORS improvements

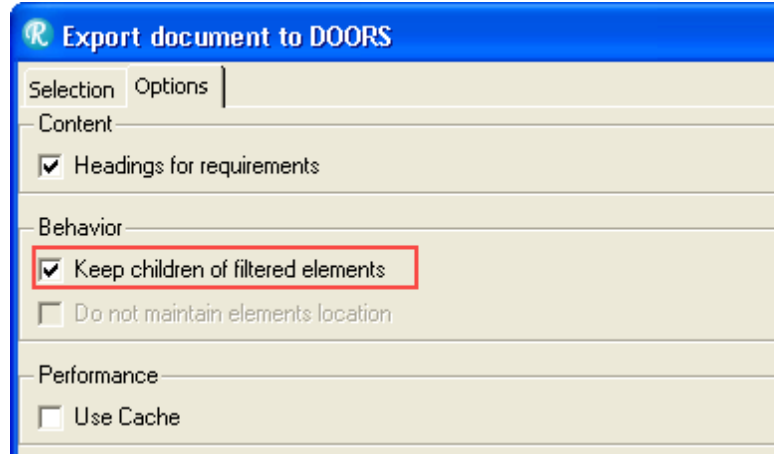
The Export to DOORS has now a tabbed interface that separates usual settings from advanced settings.

You can now specify a particular server directly in the Export to DOORS dialog.

The filtering capability of the export was improved so you can now send only specific element types to DOORS:



The highlighted option changes the filtering behavior and shall be used when you want to send only some kind of element types such as above.

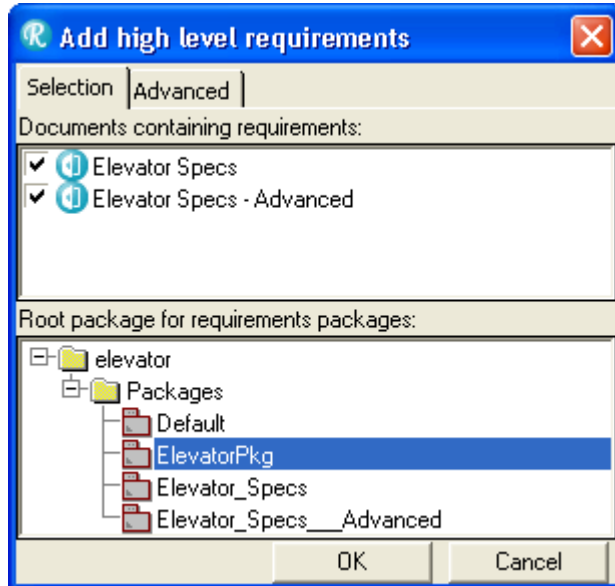


The other option 'Do not maintain element location' switches off the reordering of elements inside the exported module. So you will be able to place the exported elements anywhere you want inside the module and keep them synchronized. This feature is only available with documents that support GUIDs such as Rhapsody models.

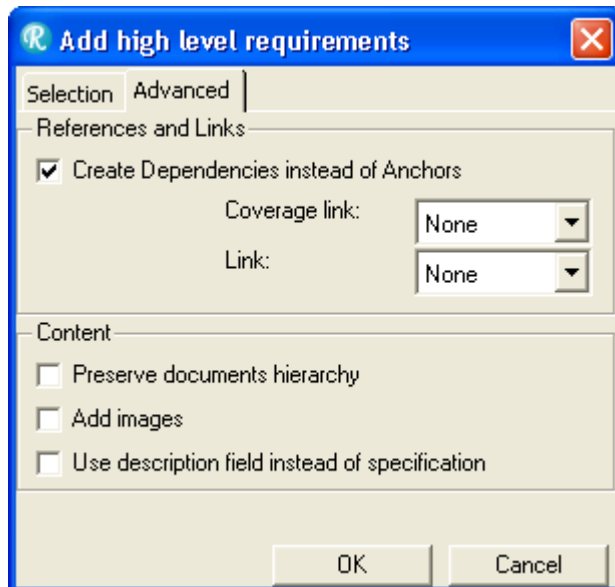
## Rhapsody interface

### Add high level requirements

The Add high level requirements dialog has been also changed into tabbed interface.



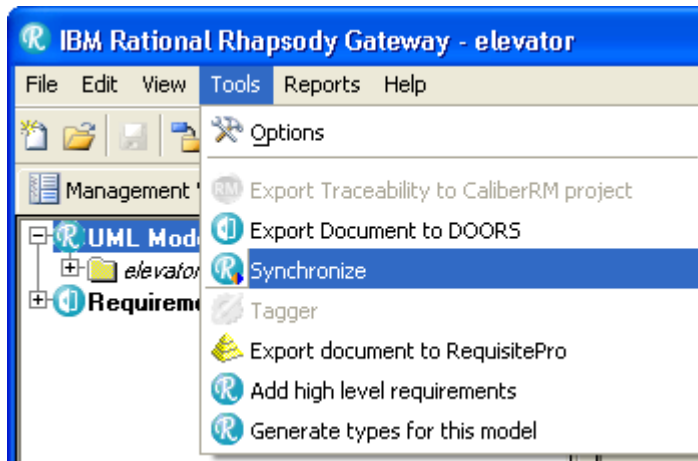
All specific settings are accessible in the Advanced tab:



## Rhapsody / DOORS Bidirectional Synchronization

It is now possible to keep model elements and DOORS high level requirements synchronized on both sides using the Rhapsody / DOORS Synchronization. This is currently limited to one Rhapsody model and several DOORS documents (bidirectional synchronization) or other documents such as Word (unidirectional from source to Rhapsody).

This feature concentrates both Rhapsody and DOORS export settings. Once everything is configured, it runs all operation consecutively with a minimum of user interactions.



### Enabling Features

The first time you run this setup mode, you will see the available features for synchronization which are including the usual operations Add high level requirements to Rhapsody and Export to DOORS.

The Rhapsody / DOORS Synchronization now introduces the reverse synchronization operations and allows integration of DiffMerge which is able to take automatically some decisions.

Reverse synchronization	
<input checked="" type="checkbox"/>	Update model from its DOORS mirror
<input checked="" type="checkbox"/>	Update high level requirements from Rhapsody
Behavior	
<input checked="" type="checkbox"/>	Use Rhapsody DiffMerge to merge modifications
<input type="checkbox"/>	Automatically merge trivial differences



# RG 7.5 – Build 570w32 - 571x

---

Release of RG for Rhapsody 7.5.0.1 (Windows & Linux).

This is a FixPack version of Rhapsody Gateway 7.5.

## DOORS interface

The export of diagrams modified in Rhapsody to DOORS has been fixed.

## Rhapsody interface

### Add high level requirements

**Preserve Hierarchy:** The translation of section names to package names was improved (better support of ADA language package names).

**Exception Handling:** Now provides a better messaging when target packages are read-only or unloaded.

# RG 7.5.1 – Build 610w32 - 609x

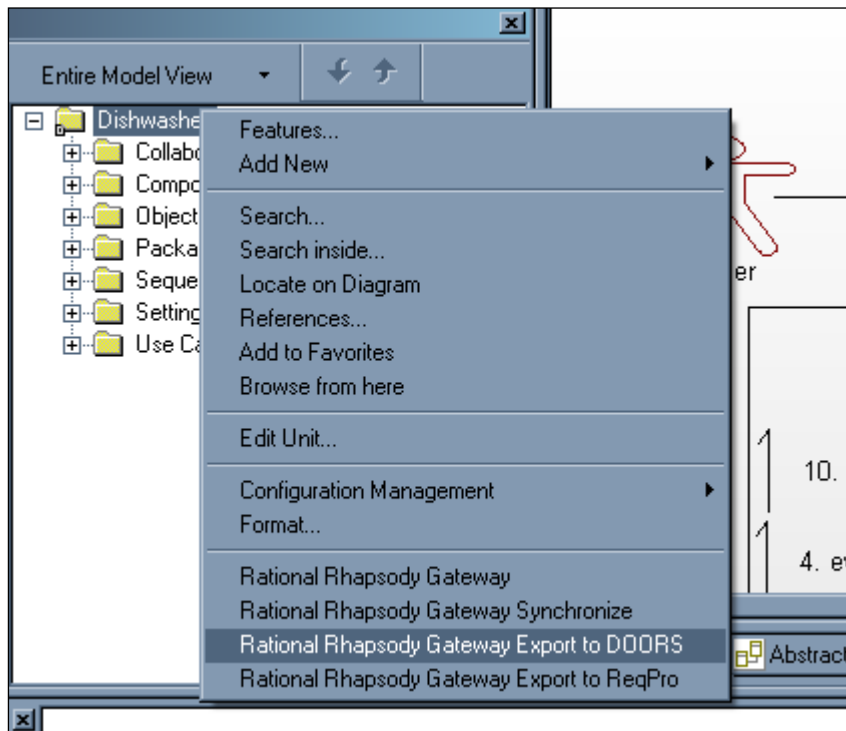
---

Release of RG for Rhapsody 7.5.1 (Windows & Linux).

## Gateway Lite Mode

**NEW:** Rhapsody Helpers are available to invoke directly the Export to DOORS or Requisite Pro.

This feature is not available for Linux.



## Internationalization

Japanese translation of the Gateway interface is now available.

## Gateway fixes

Text exclusion regular expression behavior.

Coverage statistics with Analysis filter (Management view).

Use of the Text Display field.

## Rhapsody interface

### TestingProfile

Test Objective is now treated as coverage link. Capture of the Verdict tag.

# RG 7.5.1 – Build 627w32 - 628x

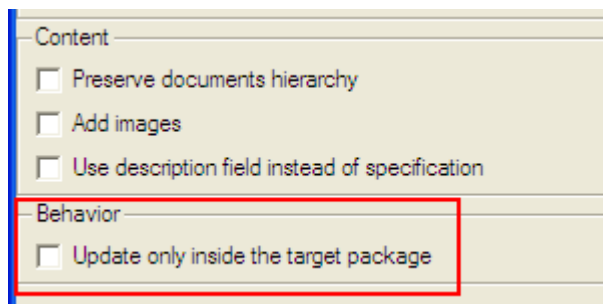
---

Release of RG for Rhapsody 7.5.1 Fix Pack 1 (Windows & Linux).

This maintenance release contains various fixes on the Rhapsody Gateway kernel, Rhapsody and DOORS interfaces.

## Rhapsody interface

New option to control the scope of the requirements synchronization using the Add high level requirements feature.



When this option is not checked, the Add high level requirements feature is able to update or add the deleted mark on requirements that were moved outside of the target package. This behavior exists since Gateway for Rhapsody 7.1.1 MR3 and 7.2.

This option may be unchecked when the synchronization must be performed locally. This was the behavior of Gateway versions prior to 7.1.1.

The local synchronization behavior might be useful when synchronizing the documents one by one.

## DOORS interface

Important fix on exportation of Rhapsody diagrams to DOORS.

Important fix related to the option “Keep children of filtered elements”.

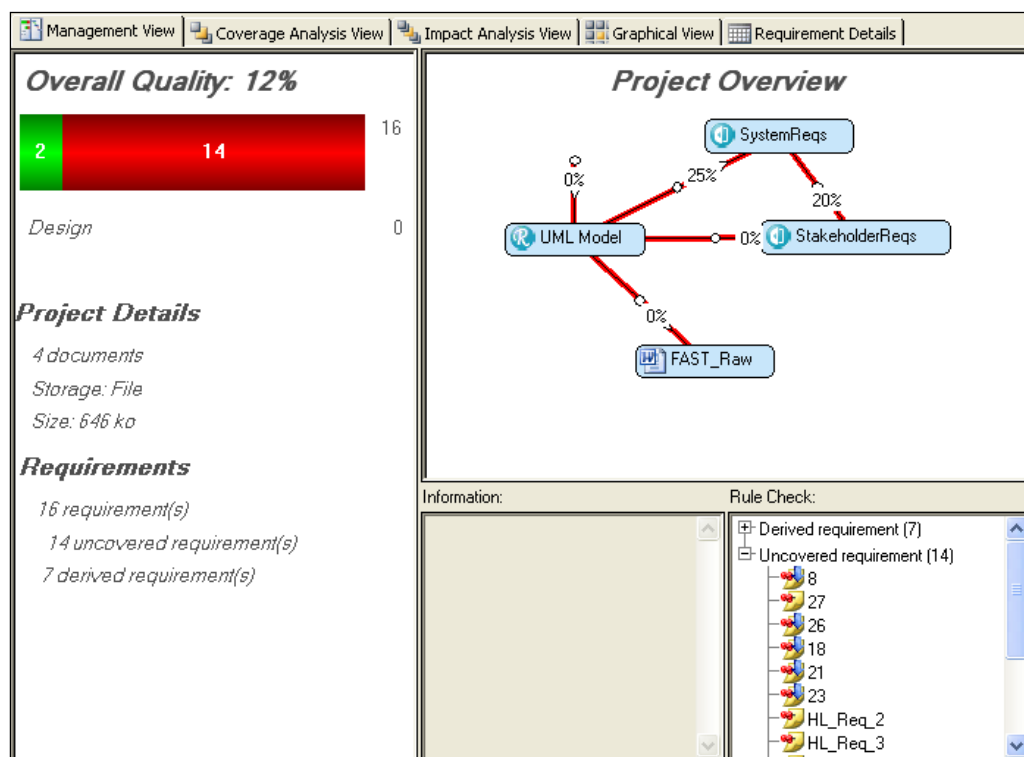
# RG 7.5.2 – Build 2788w32 – 2789x

Release of RG for Rhapsody 7.5.2 (Windows & Linux).

## Global Improvements

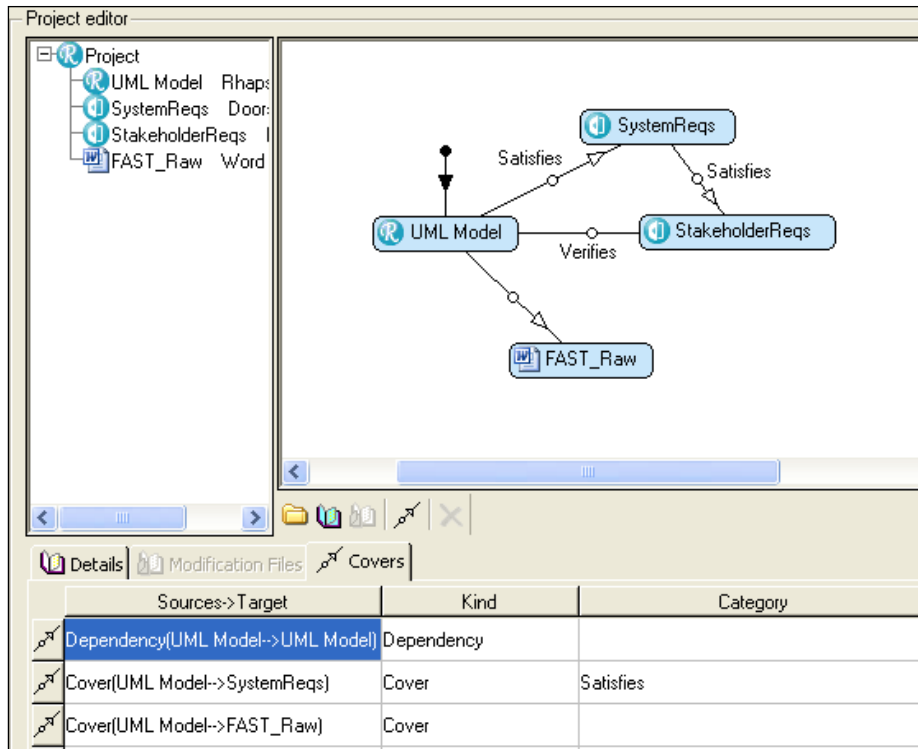
### Management View Revamped

Gateway now includes a brand new Management View where managers can quickly check the current status of the different project phases. Traceability achievements, requirement errors and a global Quality metric give an instant and easy to see project progress and overall quality metrics with project progress and metrics indicators.



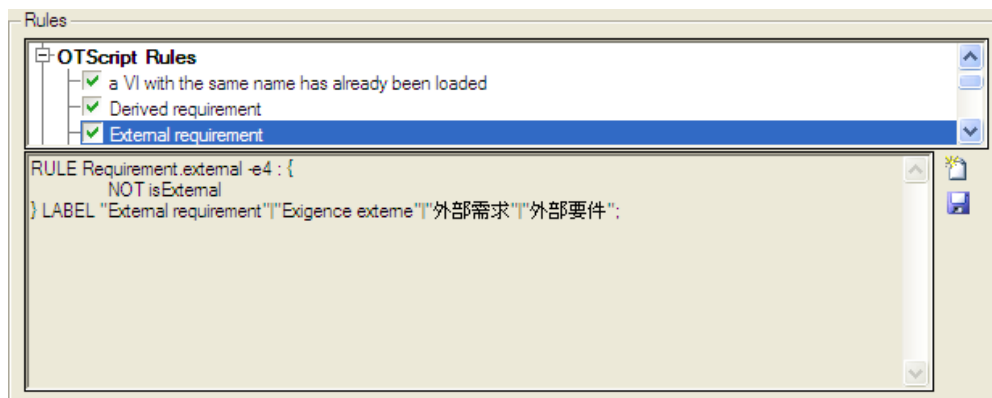
## Project Configuration – Cover Links

It is now possible to specify cover link name and category in the project configuration view. Users can now choose if project links are traceability links or dependency links resulting in different coverage calculation.



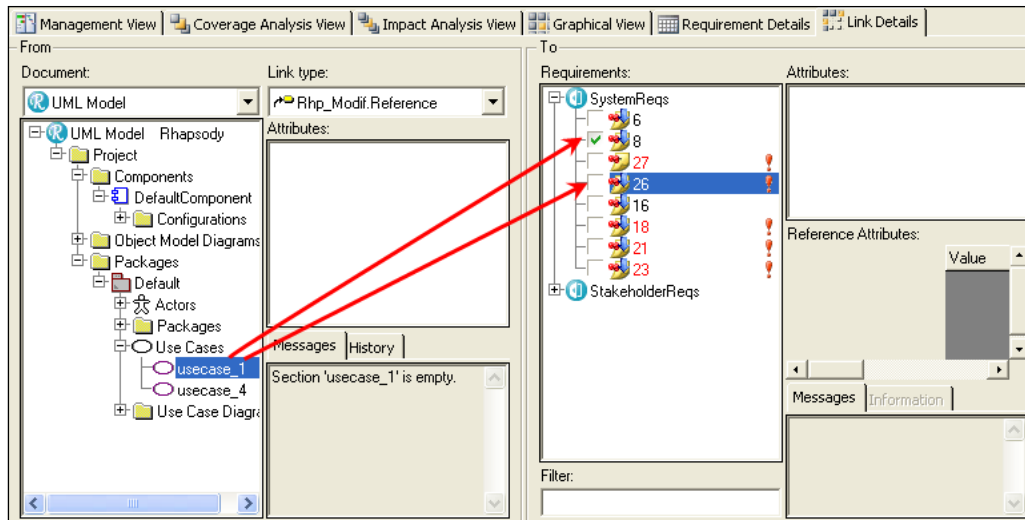
## Rules Manager

Project Managers can not specify which rules will be applied or not on each Gateway project thanks to the new rules management cockpit. This cockpit, accessible from the project configuration tab, gives the ability to enable/disable existing rules and to create new rules from scratch with a simple and intuitive rules editor.



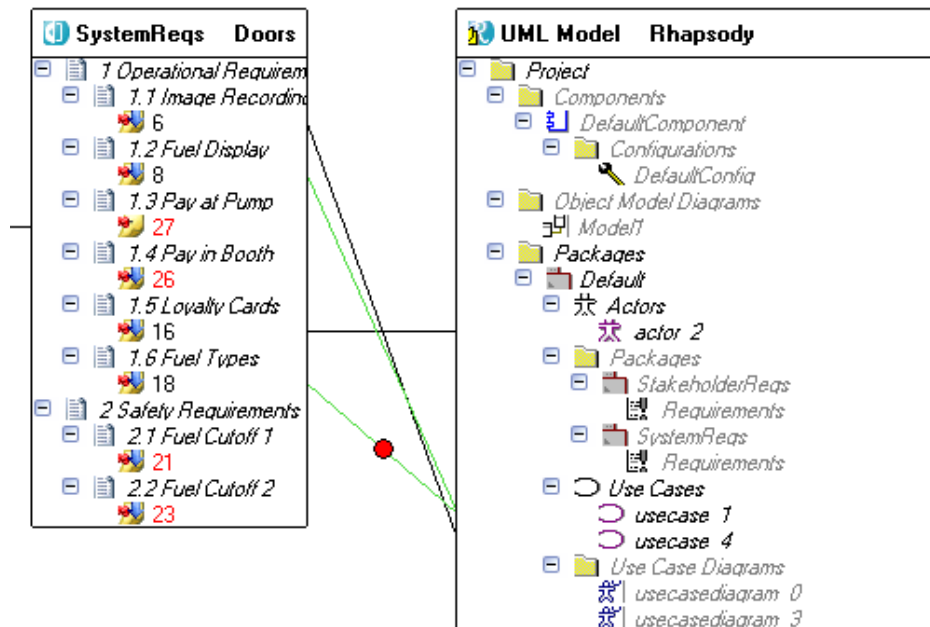
## Link Details View

As soon as we are talking about traceability, links management is a very important task to deal with. Gateway offers a new link details view where users can create, edit and analyze traceability and dependencies between project artifacts.



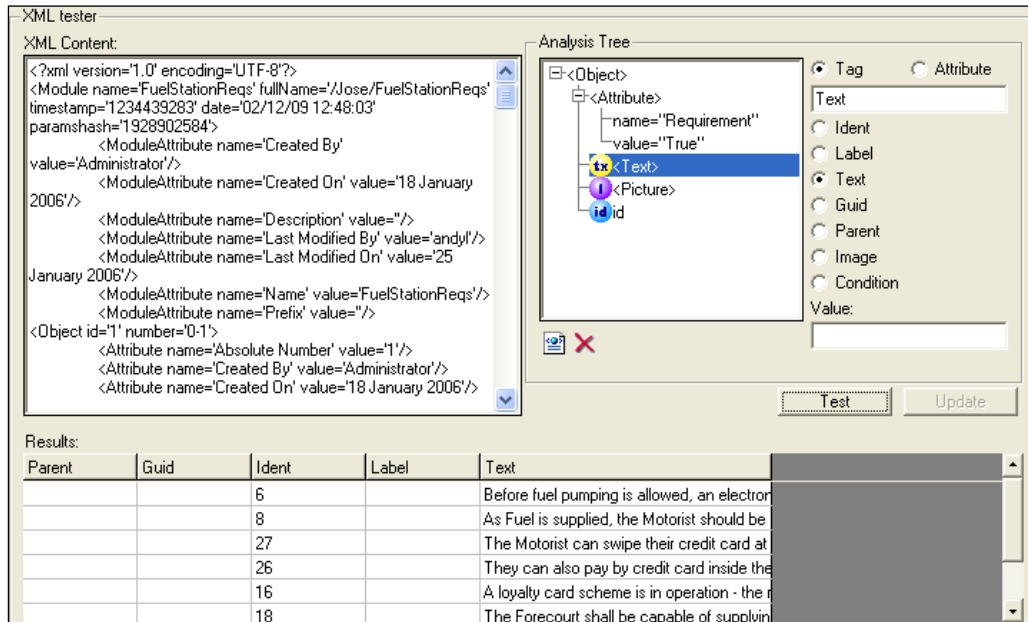
## Suspect Link Management

Gateway users can now choose if they would like to consider existing traceability data as suspicious Links as soon as changes occurred on covered requirements.



## XML Type Tester

Analysis type customization is sometimes a difficult to handle. As a result, Gateway offers a new XML Type of analysis Tester that gives the ability for users to test their XML based type of analysis prior to applying them to any real document in the project. This Tester is working as the existing PERL Regular Expression Tester for Textual Based Type of Analysis.



## Performance Improvements

### XML Capture

Gateway now includes a new XML capture process that improves the performance of the XML capture step and the stability of the Gateway tool especially when huge XML files are analyzed. This improvement is profitable for both DOORS and Rhapsody documents.

### DOORS

The DOORS conversion to XML performance was drastically improved especially when the module contains an important volume of texts and attributes values.



## Rhapsody Interface

### Rhapsody C# language support

Rhapsody Gateway now provides the Rhapsody C# type for C# language support.

### Add high level requirements

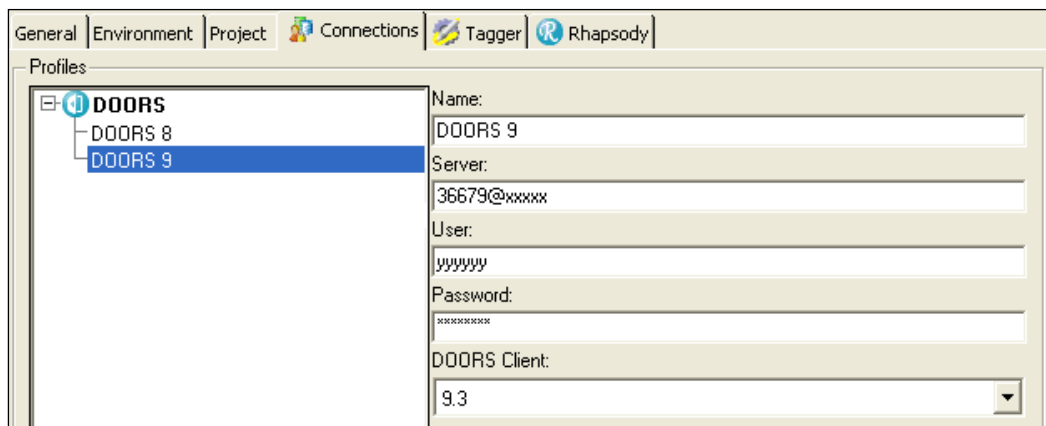
The behavior of “Create Dependencies” option was improved. Now it removes the high level links that no longer exist.

Add high level requirements operation provides more debugging information when an exception happens.

## DOORS Interface

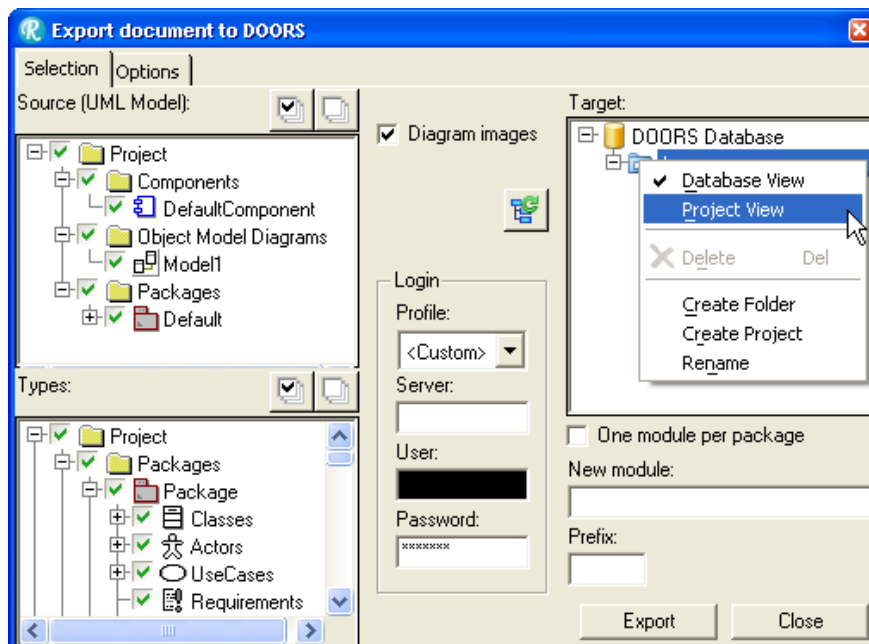
### Connection Profiles

It is now possible to setup different server profiles that will be directly accessible for import and export operations with the DOORS database. The connection profiles enable the multiple DOORS client/server version support in the Gateway without having to modify any environment variable or registry setting.



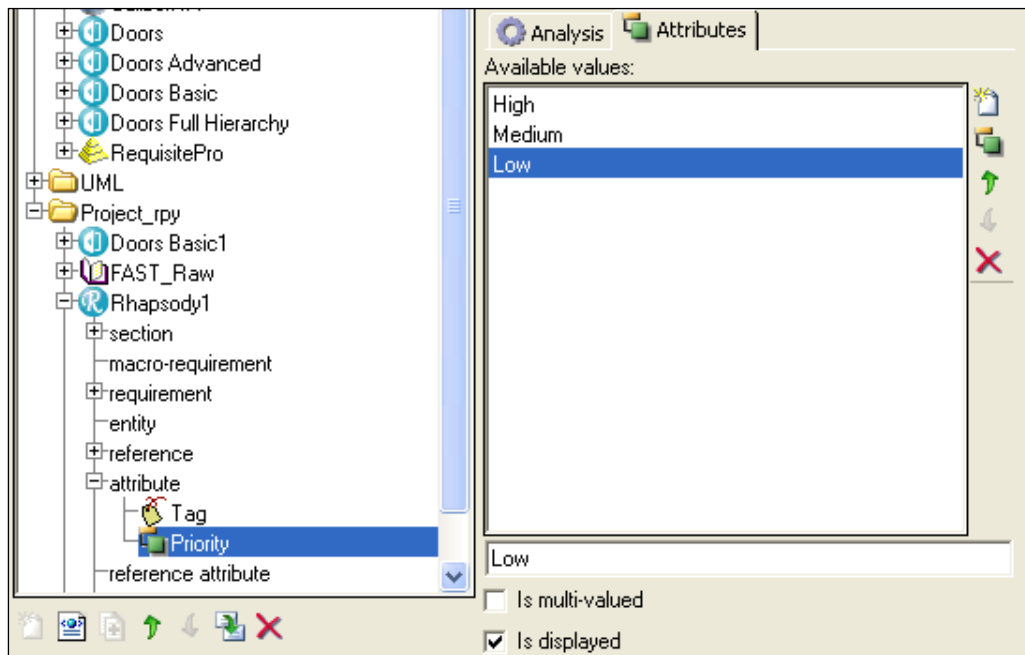
### Export to DOORS

The Export to DOORS dialog now provides the ability to show the “Project View”, you can also quickly create a DOORS Folder or Project when you are exporting new Gateway documents to DOORS. Additionally, the Options tab now provides new options to “Remove the heading number” from the export result. The export to DOORS can also create a view that shows the exported attributes.



### Note

Export to DOORS is now creating an enumerated attribute in DOORS when the values are specified in the Gateway attribute type. Multiple enumerated values can be exported to DOORS.

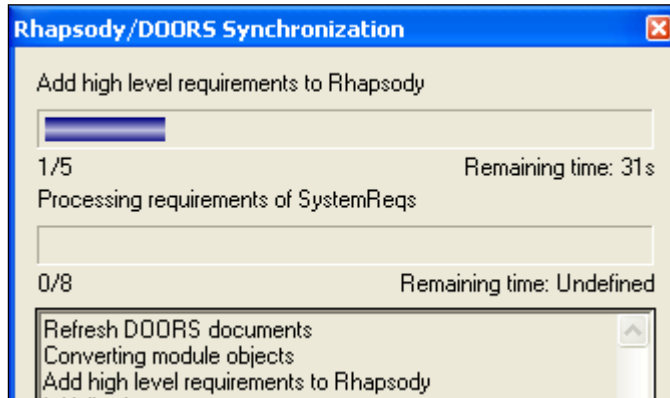


## Rhapsody / DOORS Bidirectional Synchronization

### Improvements

Various fixes of the DOORS Attributes and Rhapsody Tags synchronization.

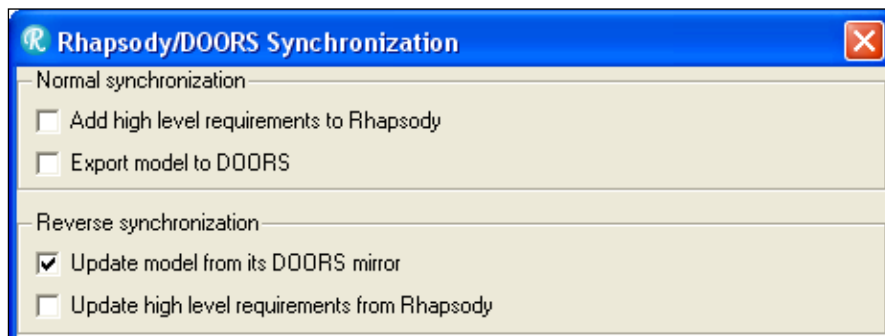
The synchronization feature now provides a single progression dialog showing the global and individual progression of each operation.



### Reverse Synchronization of Links

Rhapsody Gateway is now able to process a reverse synchronization of links defined from the mirror of a UML Model exported in DOORS. UML Links must be defined in a DOORS module defined by the DOORS Export mapping such as Trace, Dependency, Satisfaction, etc...

This operation is performed when the option “Update model from its DOORS mirror” is checked.



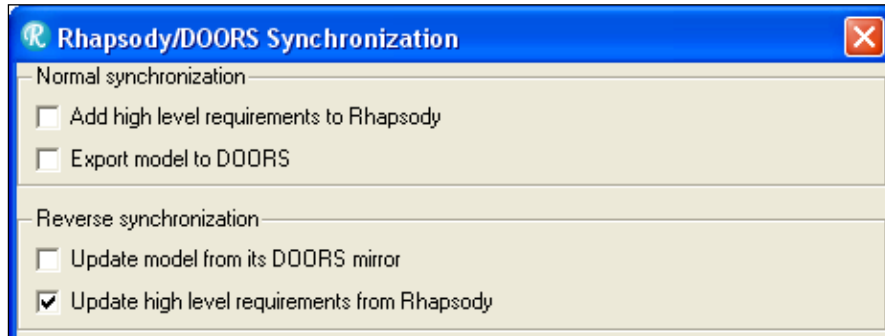
This is a reverse operation of Export model to DOORS. The DOORS link module must have the same name as a Reference or Link type defined in the Rhapsody type, only Dependency links are supported.

A “Trace” link must have a Requirement type as target since it is mapped to a Reference type in Gateway. You may use the “Dependency” module instead for link to other UML elements and eventually create another Link type tied to a Rhapsody dependency stereotype.

## Create high level requirements from Rhapsody

Rhapsody Gateway is now able to create high level requirements in DOORS when they are created from the Rhapsody Package tied to the DOORS document. Requirements must have the <<fromDoors...>> applied in order to be identified as high level requirements instead of UML Requirements.

This operation is performed when the option “Update high level requirements from Rhapsody” is checked.



This is a reverse operation of add high level requirements. Gateway will use the specification field as the text of the requirement unless the add high level requirement option “Use description field instead of specification” is checked.

# RG 7.5.2.1 – Build 2802w32 - 2803x

---

Release of RG for Rhapsody 7.5.2.1 (Windows & Linux).

This maintenance release contains various fixes on the Rhapsody Gateway kernel, Rhapsody and DOORS interfaces.

## Coverage Analysis

Fixed problem with requirements always considered as covered when they are defined in a document with a self-cover link.

## DOORS interface

Fixed problem with the save button after the Export to DOORS was aborted. This was causing a reload problem when the button was activated, it was necessary to reload twice.

Fixed conversion problem with the old Doors regular expression based type.

Fixed comparison problem before Export to DOORS that was not detecting some movements.

## XML Tester

Fixed import intermediate file problem when there is picture data in the XML file (such as diagrams from DOORS).

## Rhapsody / DOORS Bidirectional Synchronization

Fixed creation of requirements from Rhapsody using the synchronization feature “Update high level requirements from Rhapsody”. This was not working with empty DOORS modules.

# RG 7.5.3 – Build 2958w32 – 2959x

---

Release of RG for Rhapsody 7.5.3 (Windows & Linux).

## Performance Improvements

Gateway first project loading startup is now faster (about 60% measured on typical machine configuration).

## Rhapsody Interface

Rhapsody model importation now keeps the element ordering under categories when the option “Enable Ordering” is activated in Rhapsody.

## AUTOSAR 4.0 Profile

Rhapsody Gateway now supports the importation of Rhapsody AUTOSAR 4.0 model elements.

## MicroC Profile

Rhapsody Gateway now supports the importation of Rhapsody MicroC model elements.

## Support of DOORS 9.3

Gateway supports DOORS 9.3.

Gateway still complies with DOORS 7.1, DOORS 8.x, and DOORS 9.x.

## DOORS Interface

### Export Improvements



Now the Export to DOORS maintains the order of sibling elements.

The UML requirements name are now updated in the module exported to DOORS.

New term of Package are now exported into individual DOORS modules when the option “One module per Package is checked”.

### Conversion of Table objects

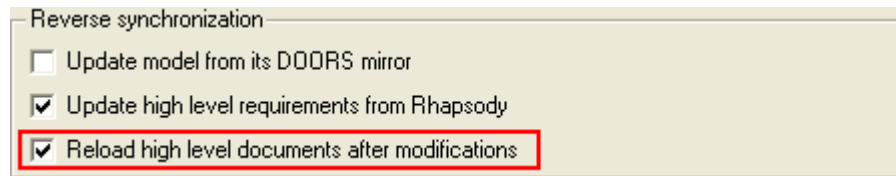
Option “With Table objects” converts the DOORS table rows and cells as XML.

	Name	Type of Analysis	File or Directory	Ignor...	Inter...	Bloc...	Variable	Value
	StakeholderReq	 Doors Basic	/Jose/Elevator Spec	<input type="checkbox"/>	<input checked="" type="checkbox"/>	<input type="checkbox"/>	With Table objects	<input checked="" type="checkbox"/>

## Rhapsody / DOORS Bidirectional Synchronization

Now the Rhapsody / DOORS bidirectional synchronization automatically reloads the DOORS document before the process starts.

Another option named “Reload high level documents after modifications” allows the Gateway to reload automatically the DOORS module modified after the synchronization process so the changes are immediately visible in the Gateway.



### Preserve Hierarchy

Now the requirements created from Rhapsody using the synchronization feature “Update high level requirements from Rhapsody” are added to the DOORS section corresponding to the package created with the option “Preserve Hierachy”.

**Note:** Once the requirement is created in DOORS, the synchronization feature doesn’t try to move to another section when the requirement is moved from one Package to another in the Rhapsody Model.

### Reverse Synchronization of Links

Now the synchronization feature is able to synchronize the links between high level requirements from Rhapsody to DOORS with the synchronization feature “Update high level requirements from Rhapsody”.

The option “Create depedencies instead of anchors” must be activated and dependencies must have the stereotype <<fromDoors...>>. Gateway will either create a Reference or Link according to the other stereotypes and the Add high level requirements configuration.

DOORS Links will be created in a link module that has the same name as the DOORS Reference or Link type used.



# RG 7.5.3.1 – Build 2964w32 – 2965x

---

Release of RG for Rhapsody 7.5.3.1 (Windows & Linux).

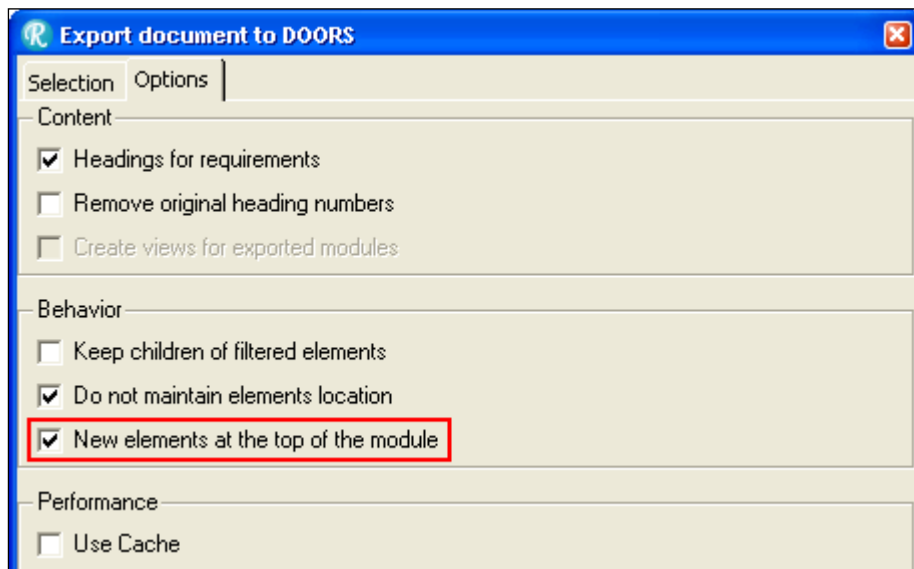
This maintenance release contains various fixes on the Rhapsody Gateway kernel, Rhapsody and DOORS interfaces.

## DOORS Interface

### Option to create new elements at the top of the module

In previous releases, the Gateway was still trying to export new elements near to other elements that were already exported in DOORS. Consequently it may be difficult to retrieve the location of the new DOORS objects exported.

Now the user can change this behavior by activating the option “New elements at the top of the module” when the option “Do not maintain elements location” is selected. All new elements are created at the top of the module.





# RG 7.6 – Build 1522w32 – 1523x

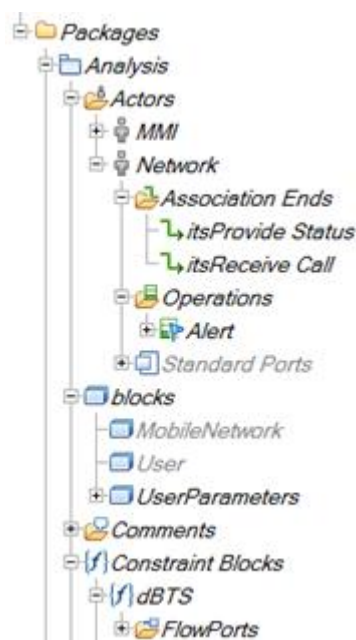
Release of RG for Rhapsody 7.6 (Windows & Linux).

---

## Rhapsody interface

### New Look and Feel

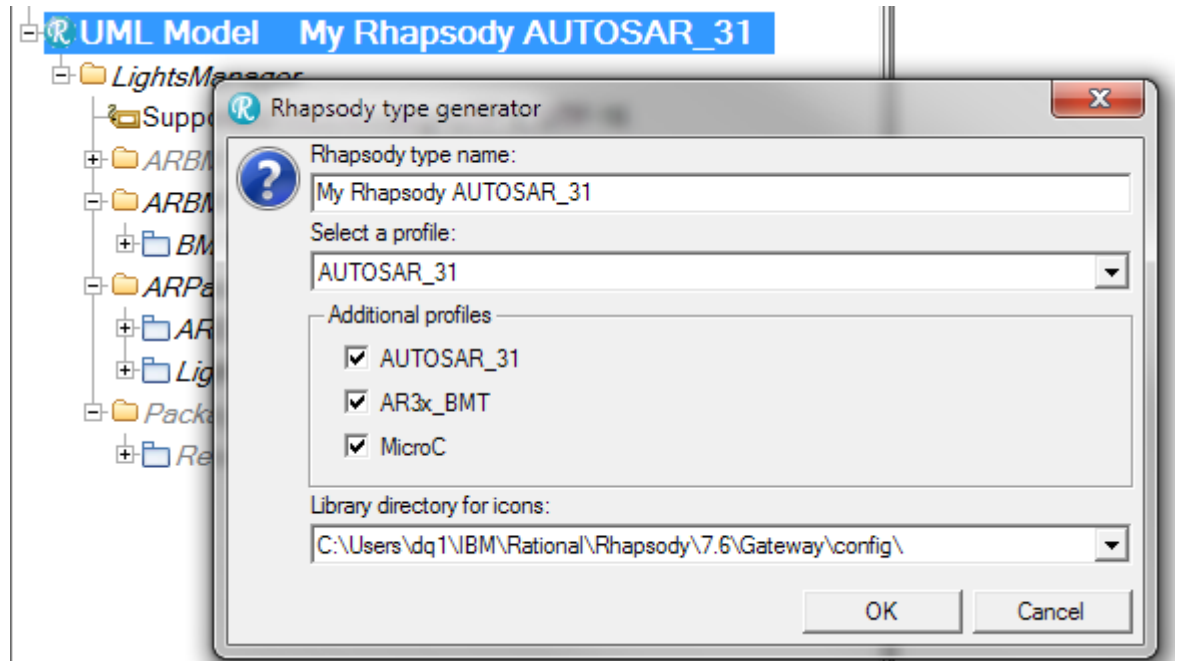
Rhapsody icons and types were updated in the Gateway to support the new Rhapsody browser look and feel.



**NOTE:** The Rhapsody browser icons were reorganized in the Gateway installation to improve the maintenance and clarity of Rhapsody profiles supported. This must be considered if you are using old Rhapsody types with customizations.

## Multiple Profile Support

The Rhapsody type generator was improved to support multiple profiles at the same time. This type generator can be invoked from the menu “Tools > Generate types for this model” when the Rhapsody model is selected in the Gateway.



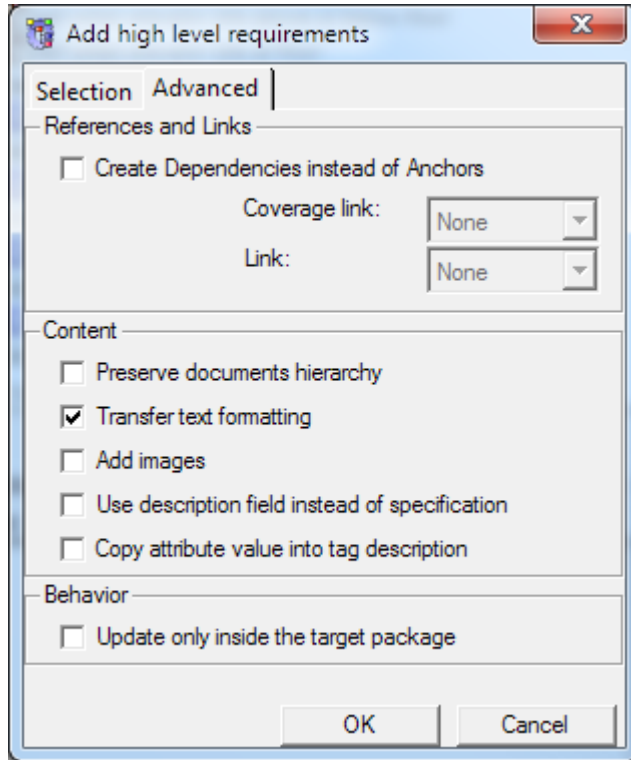
**NOTE:** Use can configure an additional user config path in the rg.ini file when the program files config is read-only :

[Files]

Config2=\$USERPROFILE\IBM\Rational\Rhapsody\<Version>\Gateway\config

## Transfer text formatting

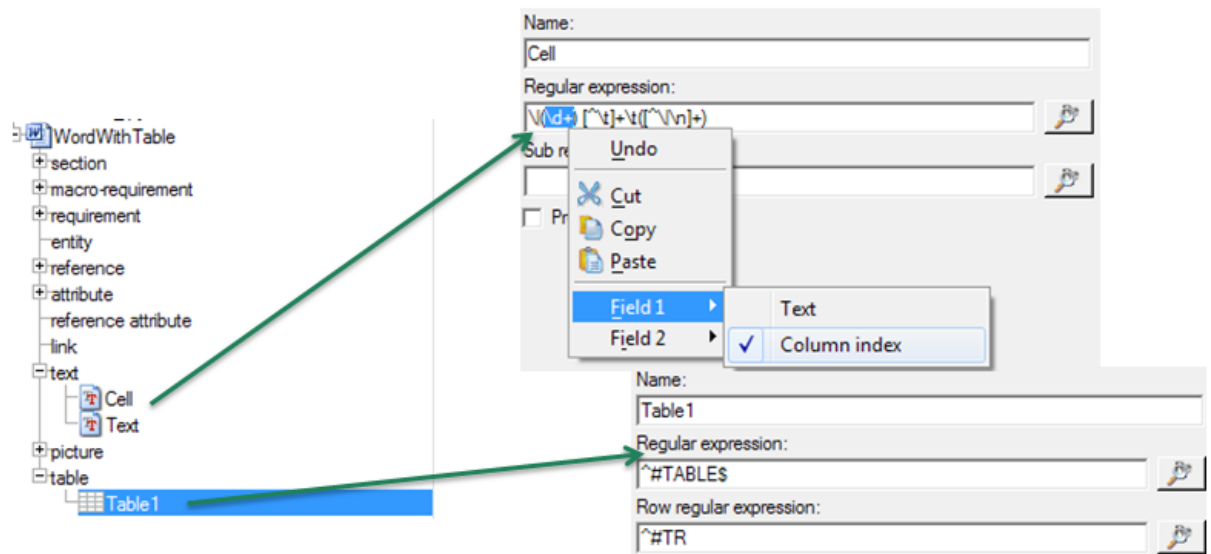
Gateway is now able to insert text of high level requirements with formatting when the option “Transfert text formating” in the Add high level requirements dialog.



Rich text can be captured from specific document types such as Word when the With Richt Text option is activated:

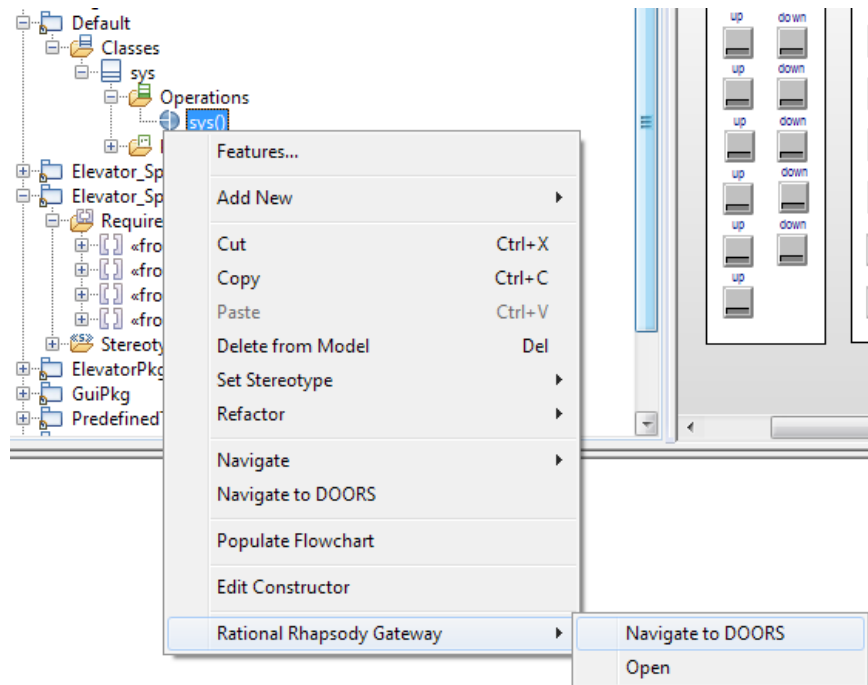
Details   Modification Documents   Covers							
Name	Type of Analysis	File or Directory	Ignor...	Inter...	Bloc...	Variable	Value
Specifications	Word	Basic Specs.doc	<input type="checkbox"/>	<input type="checkbox"/>	<input type="checkbox"/>	With Rich Text	<input checked="" type="checkbox"/>

User can also configure types to capture table rows and cells (with regular expressions only). Then the tables will be part of the rich text.



## Navigate to DOORS

A new Navigate to DOORS menu was added to Rhapsody. It allows to navigate on requirements imported from DOORS (like Navigate to Origin) or elements exported to DOORS.



## DOORS Interface

### Export Rhapsody Packages as DOORS Folders

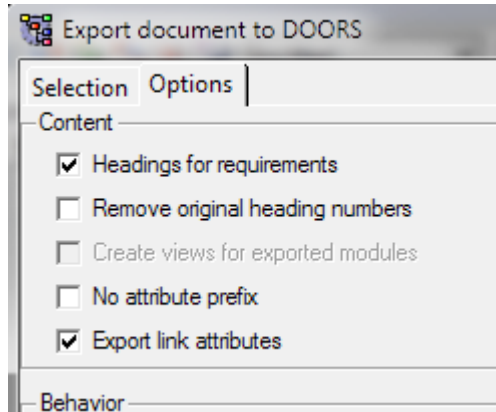
The checkbox “One module per package” was replaced with “Package layout” option that provide an additional choice: “One folder and module per package”.

This option will create a hierarchy of DOORS Folder under the Project selected for the export. The content of packages will be exported to modules in their respective folders.

Name	Type	Description
AlarmPkg	Folder	Created by Reqtify
AnalysisPkg	Folder	Created by Reqtify
GuiPkg	Folder	Created by Reqtify
HardwarePkg	Folder	Created by Reqtify
Dependency	Link	
Rhapsody_links	Link	
UML Model	Formal	HomeAlarm.rpy

## Export Reference attributes as DOORS Link attributes

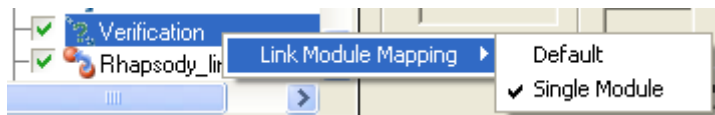
The Export to DOORS now provides the ability to export Reference attributes as DOORS Links with the option “Export link attributes”.



## Export Links to specific DOORS Link module

The Export to DOORS dialog now provides the ability to configure the target DOORS Link module for all links instead of the Default behavior which is one Link module per link type.

This option is available in the contextual menu of Link types in the Export to DOORS dialog.



## DOORS Wizard

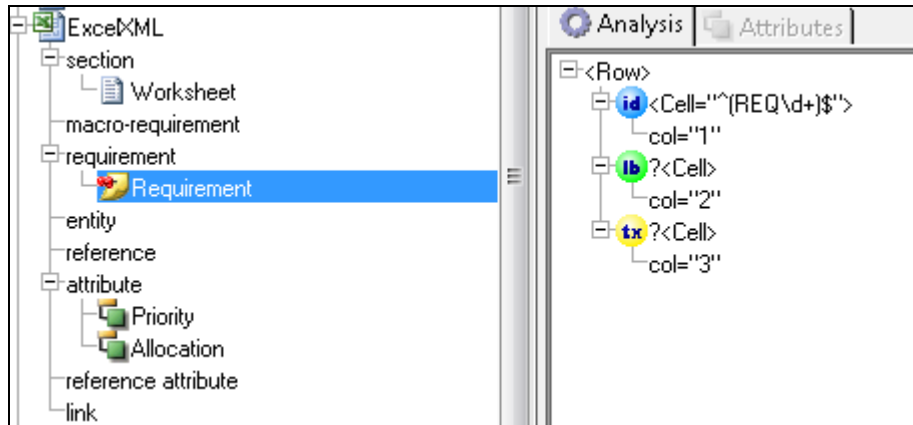
The DOORS Wizard is now able to update existing DOORS types and preserve user defined customization of fields like Display or Identifier format.



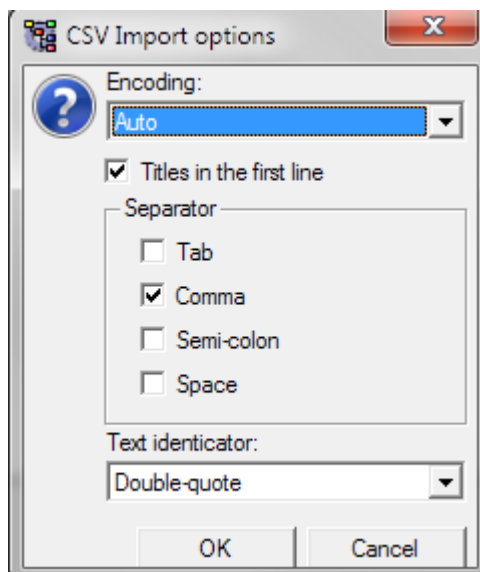
## ExcelXML and CsvXML

Rhapsody Gateway is now supporting an ExcelXML and CsvXML conversion.

The ExcelXML type is easier pattern definition and lower the risk of erroneous extraction than the Excel type.



The CsvXML type provides an import dialog that supports different kind of CSV (Comma Separated Values) format. See example in [Gateway/examples/coupling/Excel](#).





# RG 7.6.0.1 – Build 1529w32 – 1530x

---

Release of RG for Rhapsody 7.6.0.1 (Windows & Linux).

This maintenance release contains various fixes on the Rhapsody Gateway kernel, Rhapsody and DOORS interfaces.

## Rhapsody interface

Improved memory scalability of Add high level requirements and other operations to support big Rhapsody models (approximately 300,000 elements).

## DOORS interface

Optimized the size of DXL generated during the Export to DOORS operation in order to support bigger models (approximately 70,000 elements exported with some Sources unchecked).

Fixed Export to DOORS memory problems related to big diagrams containing bitmap pictures.



# RG 7.6.1 – Build 1869w32 – 1870x

---

Release of RG for Rhapsody 7.6.1 (Windows & Linux).

## Support of DOORS 9.3.0.4

Gateway supports DOORS 9.3.0.4, except the importation of picture that doesn't work with this particular version when the Windows version is below Windows 7.

Consequently, you are not able to capture pictures from the Object Text with this DOORS version on Windows XP. Additionally the export to DOORS will always try to export the diagrams if this option is selected.

Gateway still complies with DOORS 7.1, DOORS 8.x, and DOORS 9.x.

## Support of RequisitePro 7.1.3

Gateway is compatible with RequisitePro 7.1.3 and previous versions since 2003.06.

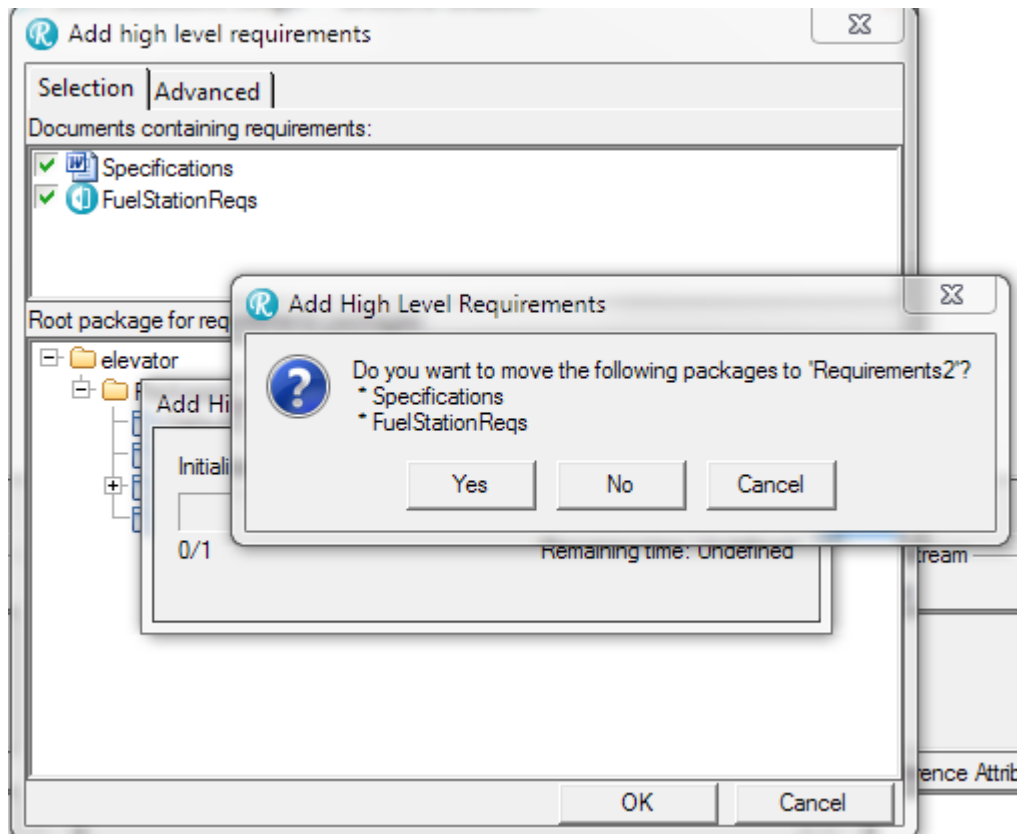
## Rhapsody interface

### Add high level requirements into a different Package

Previously, requirements outside the target package were either not moved (due to global sync capability outside the package) or marked as deleted when the option "Update only in target package" was selected.

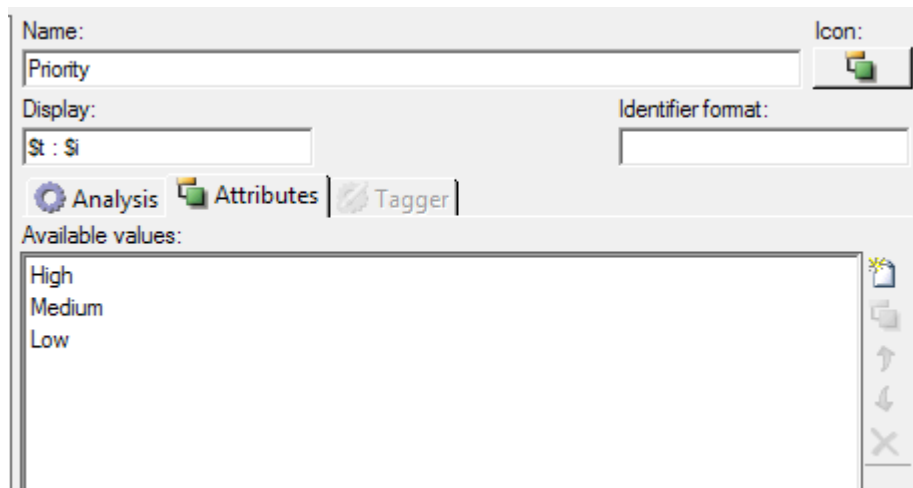
Now users can add high level requirements into any target package then decide to move the requirements later in another package.

A pop-up appears when the selected Package is different from the one previously used.

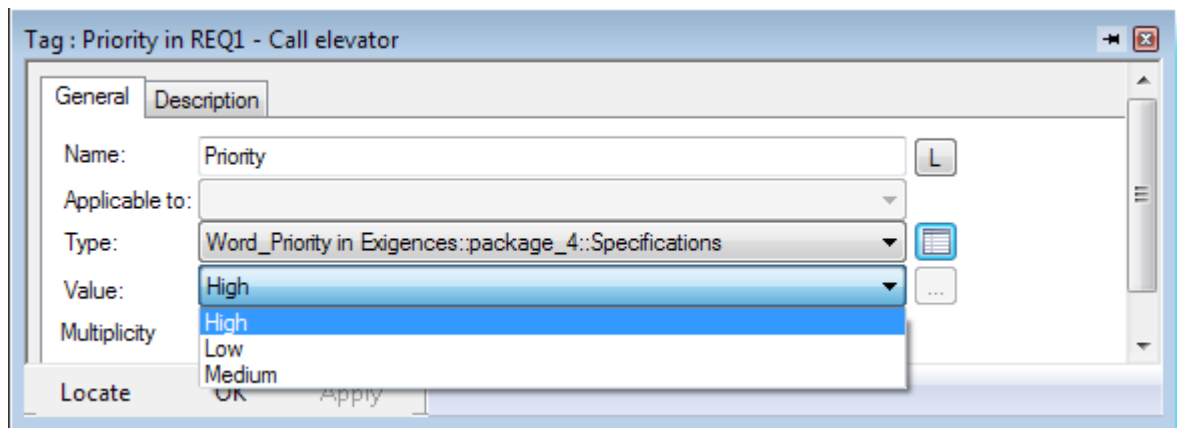


### Add high level requirements with enumerated value on Attributes

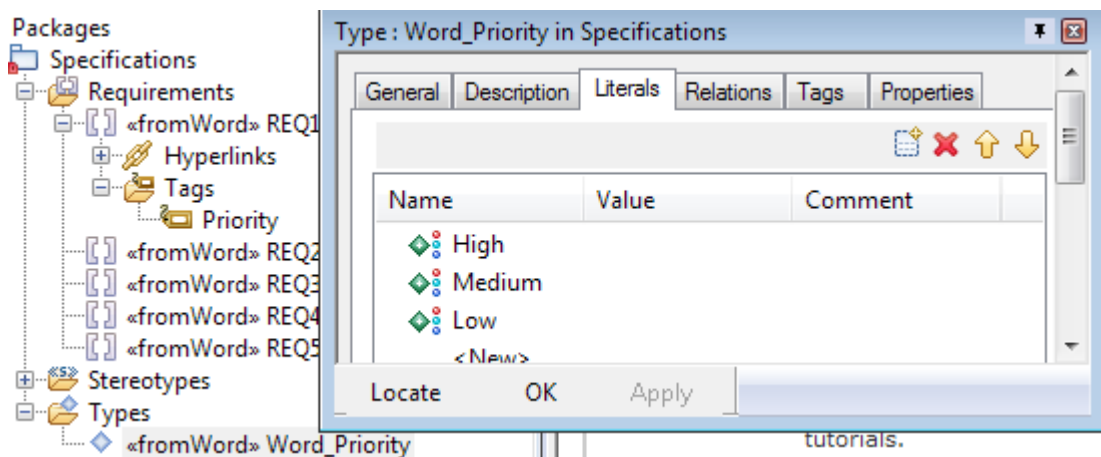
Gateway is now able to set enumerated value on requirement tags in Rhapsody. It is necessary to declare the different enumerated values in the attribute type configuration of Gateway.



Then the tag appears with an enumeration type in Rhapsody.



The enumeration is declared in the same package as the <<from>> stereotype.



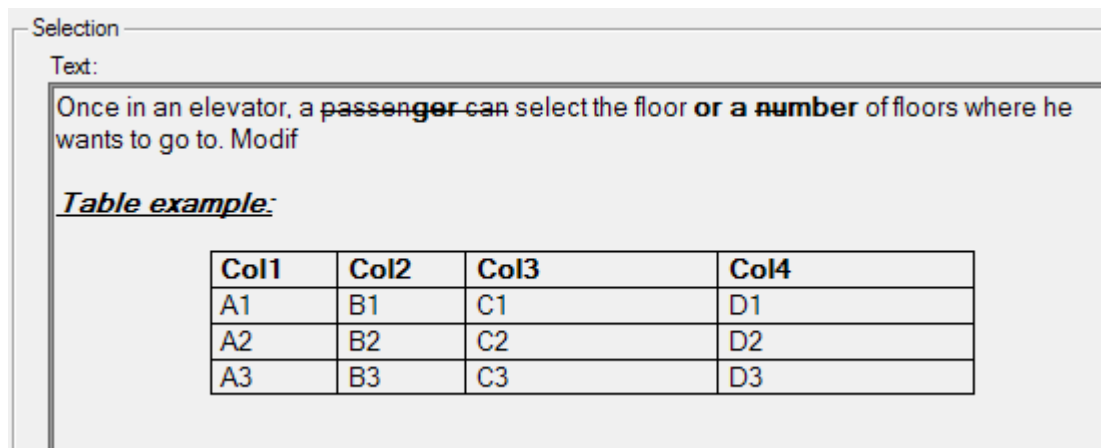
## DOORS interface

### Rich text support

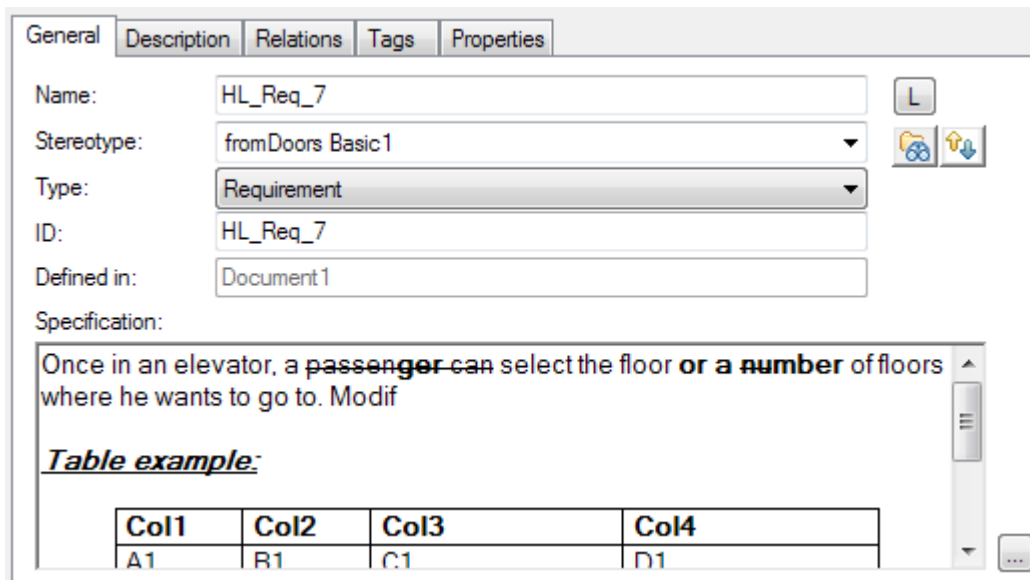
User can activate the Rich text support from DOORS by checking the “With Rich Text” variable/value on the DOORS document in the project editor:

Details   Modification Files   Covers							
Name	Type of Analysis	File or Directory	Ignor...	Inter...	Bloc...	Variable	Value
Document1	Doors Basic1	/Tutorial/Elevator Sp	<input type="checkbox"/>	<input checked="" type="checkbox"/>	<input type="checkbox"/>	With Rich Text	<input checked="" type="checkbox"/>

This option activates the RTF conversion mode for the DOORS Object Text only, the corresponding rich text will be captured and shown in the Gateway text panel.



Finally you can transfer the rich text of DOORS requirements to Rhapsody using the Add high level requirements feature and the Advanced option “Transfer text formatting” mentioned in RG 7.6 release notes.



**Limitations:** The rich text format may not be fully supported. Additionally, Gateway will only take modification of raw text into account when Add high level requirements is processed. Differences on space characters are also ignored.



# RG 7.6.1.1 – Build 1873w32 – 1874x

---

Release of RG for Rhapsody 7.6.1.1 (Windows & Linux).

This maintenance release contains various fixes on the DOORS interface and synchronization feature.

## Windows 7 installation

Improved installation for user account without administrator privileges.

## Microsoft Office 2010

Support of MS Office 2010 is officially announced for MS Word and MS Excel documents.

## DOORS interface

Conversion of DOORS module to XML was fixed.

Close the DOORS module window before export to DOORS operation in order to prevent from potential DOORS crash.

## Rhapsody / DOORS Bidirectional Synchronization

Fixed reverse synchronization of high level requirements text from Rhapsody to DOORS.



# RG 7.6.1.2 – Build 1883w32 – 1884x

---

Release of RG for Rhapsody 7.6.1.2 (Windows & Linux).

This maintenance release contains various fixes on the Rhapsody Gateway kernel, DOORS interface and synchronization feature.

## Support of DOORS 9.4

Gateway supports DOORS 9.4.

Gateway still complies with DOORS 7.1, DOORS 8.x, and previous DOORS 9.x versions.

Regarding Windows XP, see also the special mention in chapter RG 7.6.1 > Support of DOORS 9.3.0.4. The same problem appears with subsequent versions until 9.4.

Picture support on Windows XP is now fixed with DOORS 9.4.

## Rhapsody / DOORS Bidirectional Synchronization

### Reverse synchronization of multiple enumerated value attributes

Support of enumerated attributes and multiple enumerated attribute values was added for Add high level requirements in version 7.6.1.

Now the reverse operation (Update high level requirements from Rhapsody) supports the synchronization of multiple enumerated values from Rhapsody to DOORS as long as the attribute type is correctly defined in Gateway with enumerated values declared and “Is multi-valued” option is checked.

### Reload DOORS module problem

Fixed problem with the automatic reload of DOORS requirement modules at the beginning of the synchronization process.

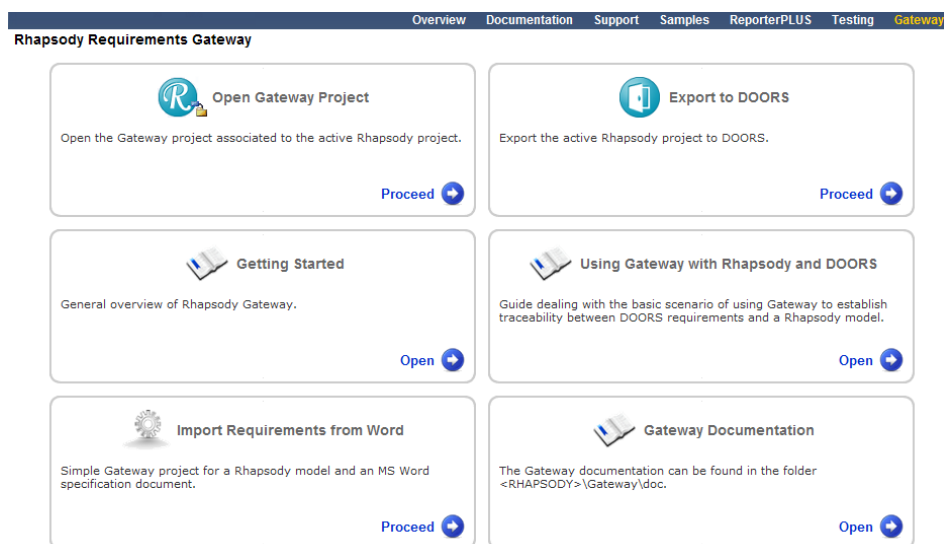
# RG 8.0 – Build 586w32 – 587x

Release of RG for Rhapsody 8.0 (Windows & Linux).

## Global Improvements

### Welcome Screen

Now Gateway provides a Welcome Screen accessible from Rhapsody toolbar.



It provides quick links to:

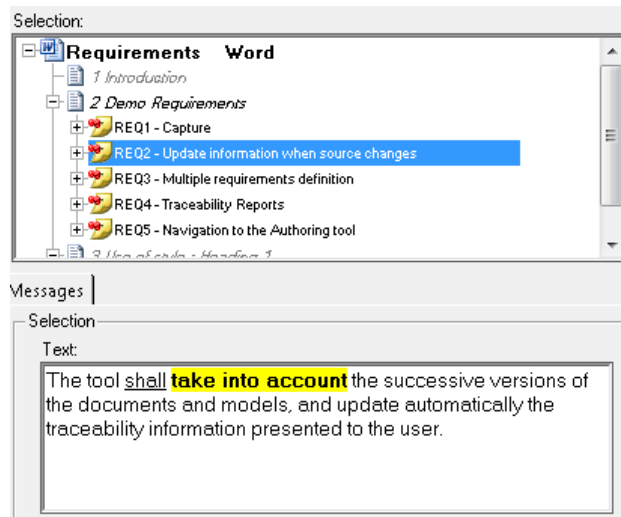
- Open the active Rhapsody project in Gateway,
- Export the active Rhapsody project to DOORS,
- Essential documentation,
- Basic Gateway project example with Rhapsody and Word requirements,
- Shortcut to Gateway documentation folder.

## Rich Text Support

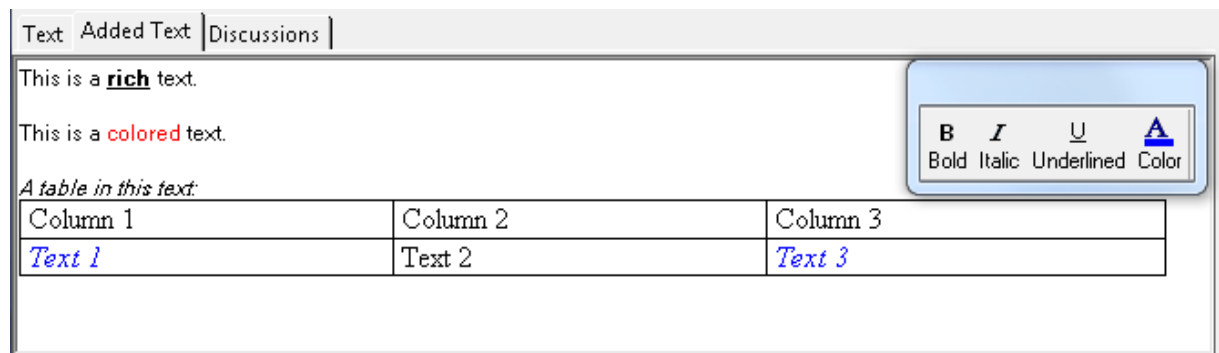
### Rich Text Management

Rhapsody Gateway is now able to process rich text:

- Display in Rhapsody Gateway GUI



- Import from external tool
- Enter in Rhapsody Gateway GUI using specific toolbar or shortcuts



- Available for Report Generation
- Export to external tools

Text supports rich text properties such as:

- text colour and background colour
- bold, italic, underline, strikethrough, superscript, subscript
- bulleted list and numbered list
- left, right and center alignments
- tables
- pictures

- OLE objects

Following interfaces have been upgraded to support rich texts:

- Word
- Excel
- OpenOffice Writer
- Rhapsody
- DOORS

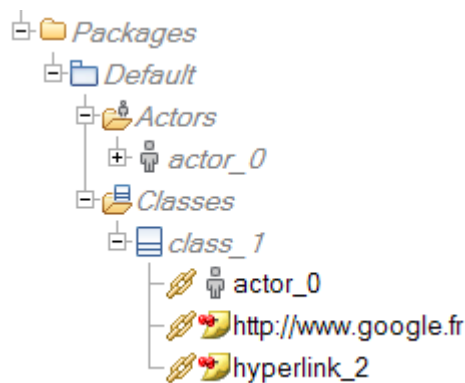
Following features support rich texts too:

- Tagger

## Rhapsody Interface

### Capture model hyperlinks

Now Gateway is able to capture Hyperlinks as links between elements (when link end is a model element) or links to “external requirement”.

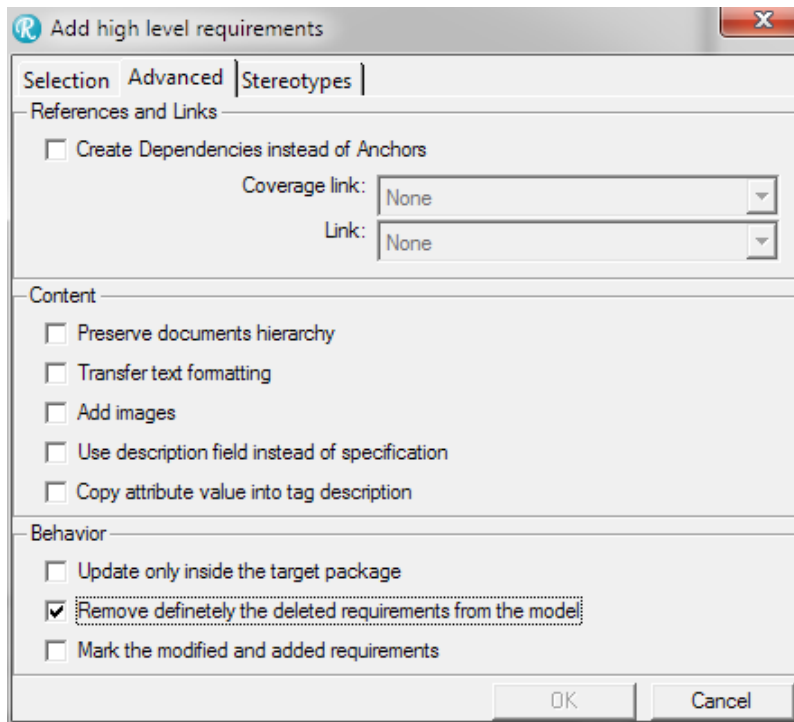


It is possible to follow the Hyperlink to another model element using right-click menu > Find In The Tree. Other Hyperlinks have external requirements with free text identifier as link end, it is only possible to navigate to URL link.

### Delete old high level requirements automatically

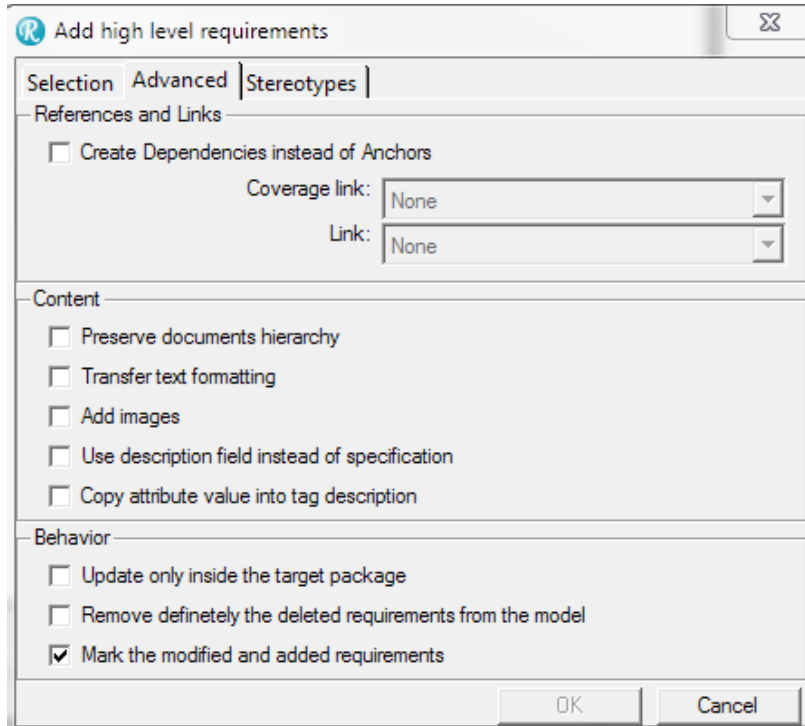
Previously the Add high level requirements feature was marking the requirements with the tag “Deleted\_At\_High\_Level” when the same requirement was no longer appearing in the documents selected in Add high level requirements configuration.

Now it is possible to change this behavior by activating the option “Remove definitely the deleted requirements from model”.



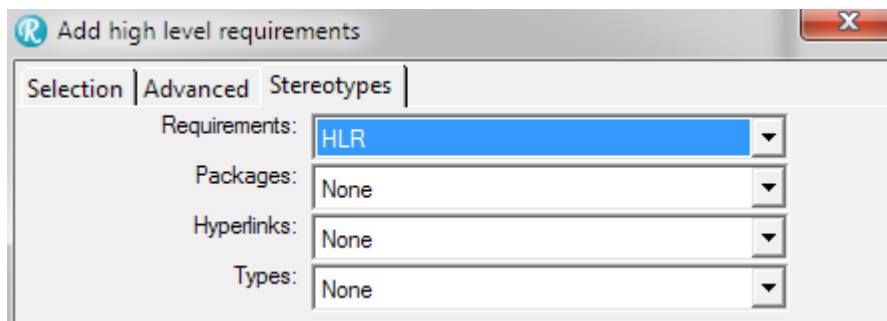
## Mark added or modified high level requirements with a tag

It is now possible to identify requirements created or modified by Add high level requirements feature by activating the option “Mark the modified and added requirements”. A tag named “Added\_At\_High\_Level” or “Modified\_At\_High\_Level” will be applied accordingly to the operation performed.



## Specify stereotype for high level requirements and related elements

It is now possible to select a specific stereotype or new term individually for Requirements, Packages, Hyperlinks and Types element created with the Add high level requirements feature. The historical stereotype <<fromXXX>> is still added implicitly for compatibility reasons.



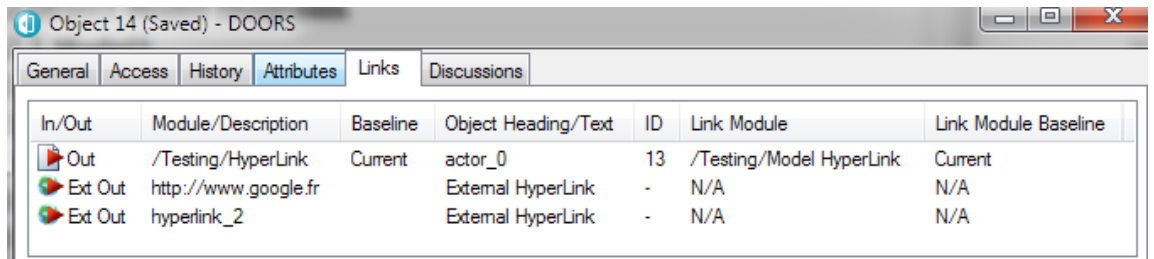


## DOORS Interface

### Export external links

Rhapsody Hyperlinks are divided in two categories:

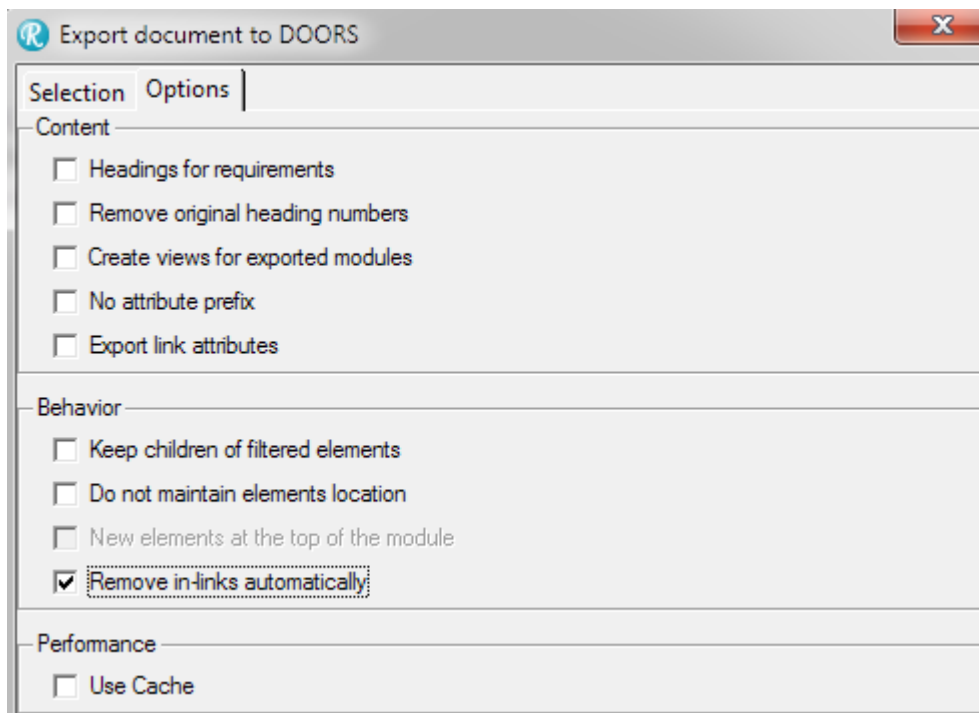
- 1) Regular link when the target is a model element. These links are exported in regular DOORS link modules.
- 2) External link when target is a free text or UML (also known as “external requirement”). These links are exported as DOORS external links.



In/Out	Module/Description	Baseline	Object Heading/Text	ID	Link Module	Link Module Baseline
Out	/Testing/HyperLink	Current	actor_0	13	/Testing/Model HyperLink	Current
Ext Out	http://www.google.fr		External HyperLink	-	N/A	N/A
Ext Out	hyperlink_2		External HyperLink	-	N/A	N/A

### Remove object with in-links automatically

Previously, the Export to DOORS did not remove the old elements that were still referenced by another module or other DOORS objects that were not recognized by the export to DOORS. Now it is possible to force the deletion of object with in-links and a warning message is still shown.



**Export document to DOORS**

**Selection Options**

**Content**

- ☐ Headings for requirements
- ☐ Remove original heading numbers
- ☐ Create views for exported modules
- ☐ No attribute prefix
- ☐ Export link attributes

**Behavior**

- ☐ Keep children of filtered elements
- ☐ Do not maintain elements location
- ☐ New elements at the top of the module
- ☒ Remove in-links automatically

**Performance**

- ☐ Use Cache

## Rhapsody / DOORS Bidirectional Synchronization

### Reverse synchronization of model element addition/deletion

It is now possible to create or delete model elements with the reverse synchronization operation “Update model from its DOORS mirror”.

ID	StatechartName.rpy	Element Label	Element Type	Element Guid	E
UML_1	<b>1 StatechartName</b>	StatechartName	Project	GUID 617692eb-9e5f-4043-9f4c-1a2561611a8b	
UML_2	<b>1.1 Components</b>		Components	GUID 617692eb-9e5f-4043-9f4c-1a2561611a8b_Components	
UML_3	<b>1.1.1 DefaultComponent</b>	DefaultComponent	Component	GUID f9d6628c-dba8-4051-a963-f0d5524d4e22	
UML_4	<b>1.1.1.1 Configurations</b>		Configurations	GUID f9d6628c-dba8-4051-a963-f0d5524d4e22_Configurations	
UML_5	<b>1.1.1.1.1 DefaultConfig</b>	DefaultConfig	Configuration	GUID ad2c2c46-ea36-45c4-8353-cdd563a8e354	
UML_6	<b>1.2 Object Model Diagrams</b>		ObjectModelDiagrams	GUID 617692eb-9e5f-4043-9f4c-1a2561611a8b_ObjectModelDiagrams	
UML_7	<b>1.2.1 Model1</b>	Model1	ObjectModelDiagram	GUID 50fa3b56-c2bc-41f3-8306-8871e2e9ec14	
UML_8	<b>1.3 Packages</b>		Packages	GUID 617692eb-9e5f-4043-9f4c-1a2561611a8b_Packages	
UML_9	<b>1.3.1 Default</b>	Default	Package	GUID 4d80d46a-3d32-4c1f-a63c-1de393224882	
UML_10	<b>1.3.1.1 Classes</b>		Classes	GUID 4d80d46a-3d32-4c1f-a63c-1de393224882_Classes	
UML_36	<b>1.3.1.1.1 MyNewClass</b>	MyNewClass	Class	MyGUID_1	
UML_37	<b>1.3.1.1.1.1 MyNewAttribute</b>	MyNewAttribute	Attribute	MyGUID_2	

Objects created in DOORS must have the following attributes filled:

- “Element Label” must contain a valid Rhapsody element name
- “Element Type” must contain a valid Rhapsody Gateway type name according to the Rhapsody type being used (Rhapsody, Rhapsody SysML, or other).
- “Element Guid” must contain a unique and arbitrary value.

Once the elements are created in Rhapsody, the regular export to DOORS shall be performed (as part of the synchronization process for instance). The DOORS object will be replaced by other objects corresponding to the elements created in Rhapsody.

# RG 8.0.1 – Build 592w32 – 593x

---

Release of RG for Rhapsody 8.0.1 (Windows & Linux).

This maintenance release contains various fixes on the Rhapsody Gateway kernel, Rhapsody and DOORS interface.

## Support of DOORS 9.5

Gateway supports DOORS 9.5.

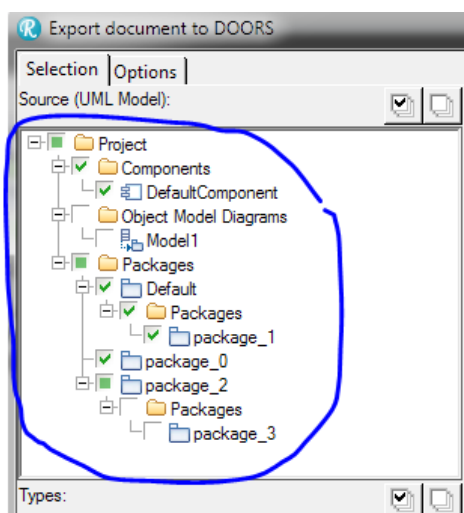
Gateway still complies with DOORS 7.1, DOORS 8.x, and previous DOORS 9.x versions.

## DOORS interface

Added support of elements moved from one package to another while option “One Module per Package” is used. Previously, a message “Can't move elements out of DOORS module” was shown. Now, the elements are considered as deleted from the previous package and the corresponding objects are created in the other package.

Fixed incorrect behavior in Export to DOORS while using option “One Module per Package and Folder”.

Improved selection of sources with tri-state checkbox.





# RG 8.0.2 – Build 602w32 – 604x

---

Release of RG for Rhapsody 8.0.2 (Windows & Linux).

This maintenance release contains various fixes on the Rhapsody and DOORS interface.

## Rhapsody interface

### Capture Diagrams

Now the capture diagram feature is no longer changing the property "General.Graphics.ExportedDiagramScale" of diagrams. The exportation of big diagrams was also improved.

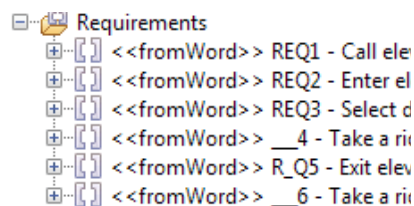
### Add high level requirements other languages support

Add high level requirements feature was updated to support the restriction introduced in 8.0 for Rhapsody requirement name with Japanese, Chinese, and other languages with special character encodings.

This is only applicable when the application is running under a Japanese, Chinese or other specific language operating system.

Now the Add high level requirements feature may replace some language specific characters with compatible ones and may even use Rhapsody autonaming when necessary.

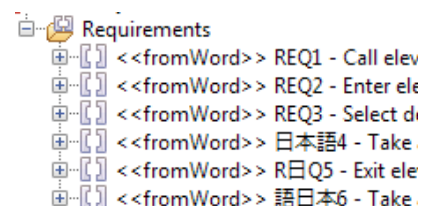
The Label of Rhapsody requirements is not concerned by this restriction.



Requirements

- <<fromWord>> REQ1 - Call elev
- <<fromWord>> REQ2 - Enter ele
- <<fromWord>> REQ3 - Select d
- <<fromWord>> \_\_4 - Take a ri
- <<fromWord>> R\_Q5 - Exit elev
- <<fromWord>> \_\_6 - Take a ri

Regular browser display



Requirements

- <<fromWord>> REQ1 - Call elev
- <<fromWord>> REQ2 - Enter ele
- <<fromWord>> REQ3 - Select di
- <<fromWord>> 日本語 - Take
- <<fromWord>> R日Q5 - Exit ele
- <<fromWord>> 語日本6 - Take

Label Mode browser display



# RG 8.0.3 – Build 561w32/w64 – 563x

---

Release of RG for Rhapsody 8.0.3 (Windows & Linux).

## Global Improvements

### Regular Expression Analysis

Separators around identifiers are automatically removed to avoid traceability coverage errors.

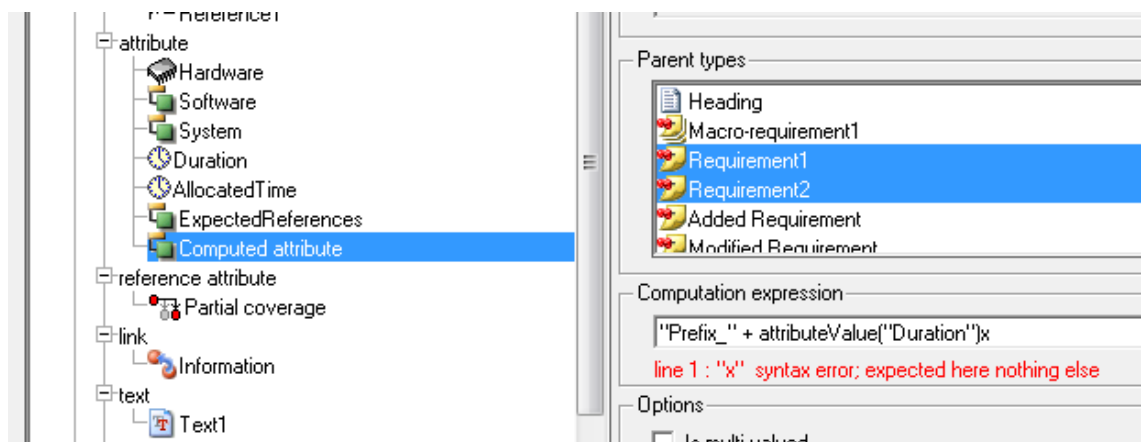
### Internal Types Usage

By default, internal types are disabled. It is preferable to use Added Element Types. A checkbox is available in Options window to reactivate them.

### Attribute types

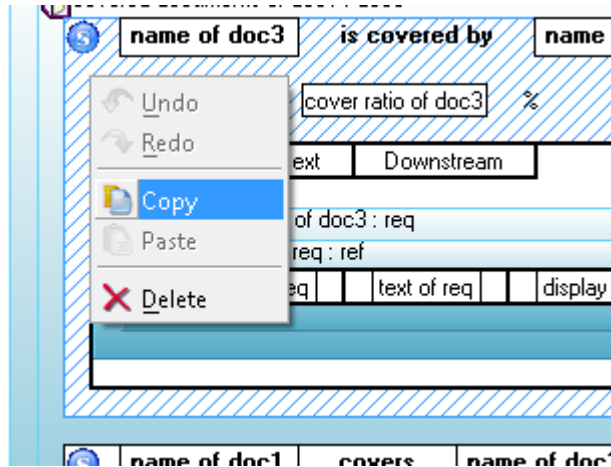
Attributes can be computed using OTScript code.

Attribute parent types can be defined. When this parentship is not respected, errors are raised during analysis process.



## Report Editor

Copy/paste functions are now available to copy/paste part of Report Model.



## Report Generation Fields

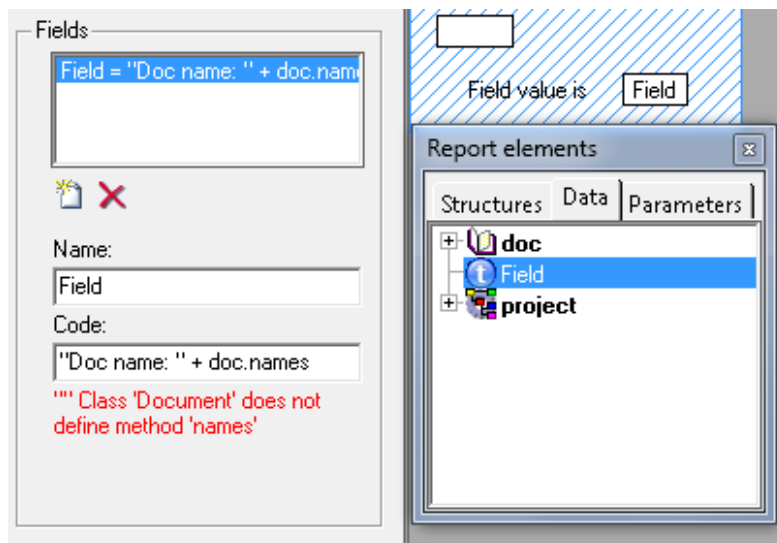
Fields can be defined in the Report Model Editor.

These fields are set using OTScript language.

They can be used in:

- Constant texts,
- Condition,
- Templates,
- Other OTScript code.

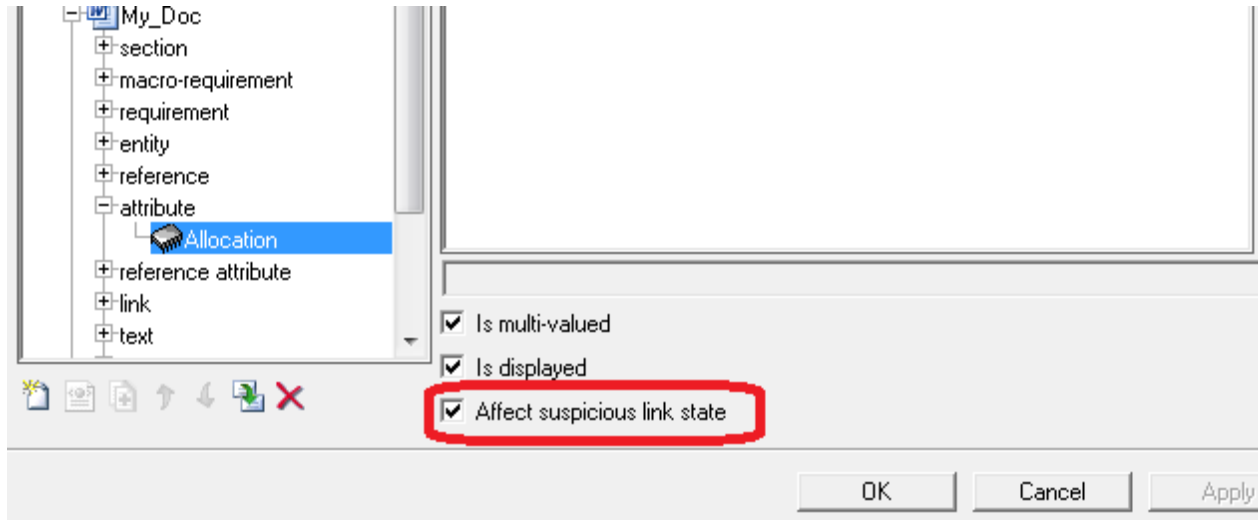
They are referenced using '\$' sign.



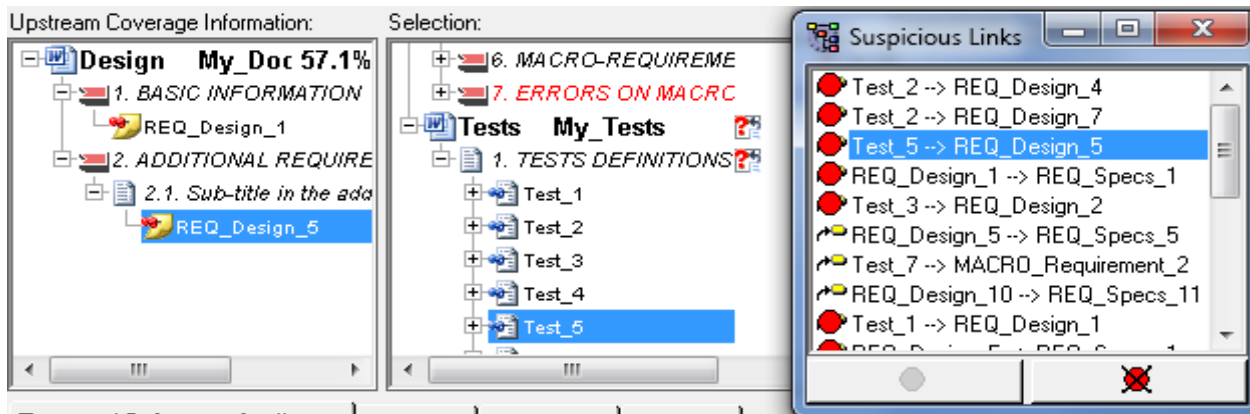


## Suspicious Links

A new checkbox *Affect Suspicious Link* is available in *Attributes* tab in the types editor to indicate that attribute change must affect suspicious link state.

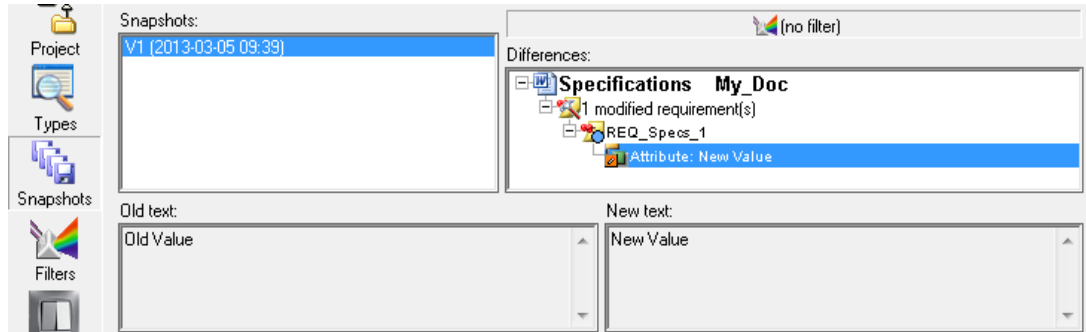


A new dialog allows to manage Suspicious links easily and globally.



## Snapshot Editor

In the Snapshot Editor, Gateway shows new and old attribute values.



## Find Dialog

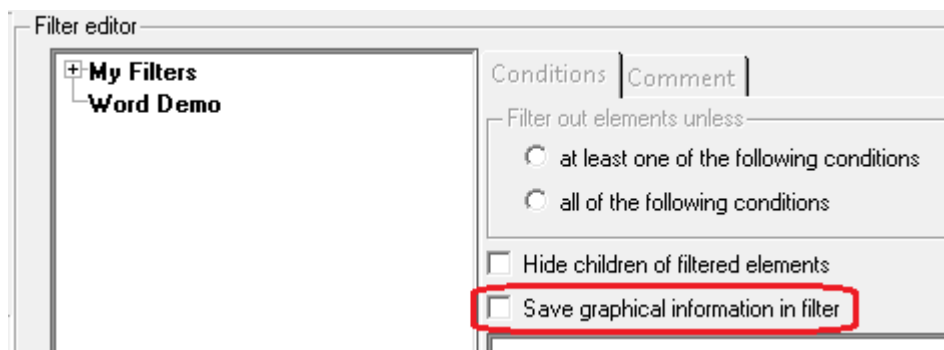
Find dialog has been enhanced in order to specify scope of search.



## Filters

Following graphical information can now be saved in filter:

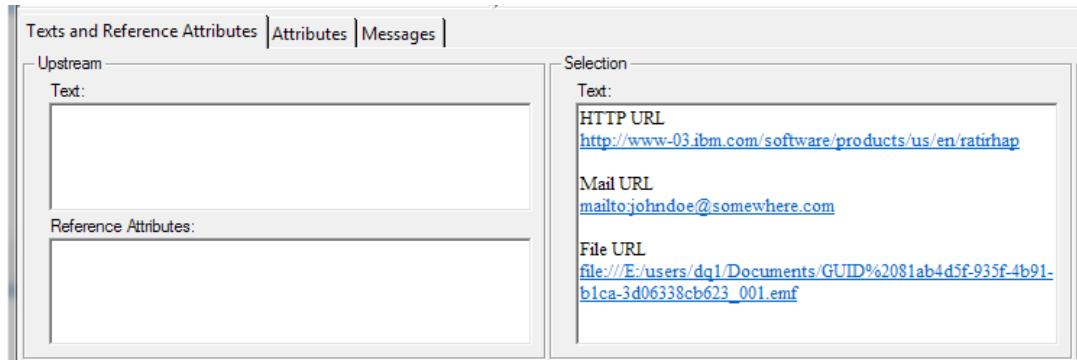
- Document positions and sizes in Graphical View
- Column widths, sort criterion and sort order in Requirement Details.



## On-the-fly hyperlinks on text field

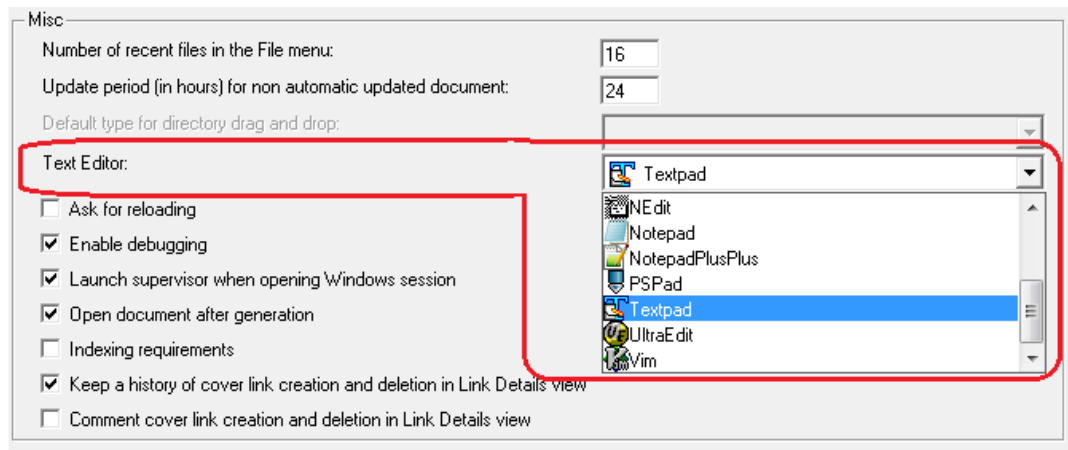
Now HTTP, Mail, File and other URL are automatically translated to hyperlinks in the Gateway text field so the navigation is now possible.

Regular Windows and UNIX file addresses are not supported.



## Definition of default Text Editor

Default Text Editor used for edition of text (*Text* edit tool) can be defined in Option Dialog.



## Microsoft Office 2013

Support of MS Office 2013 is officially announced for MS Word and MS Excel documents.

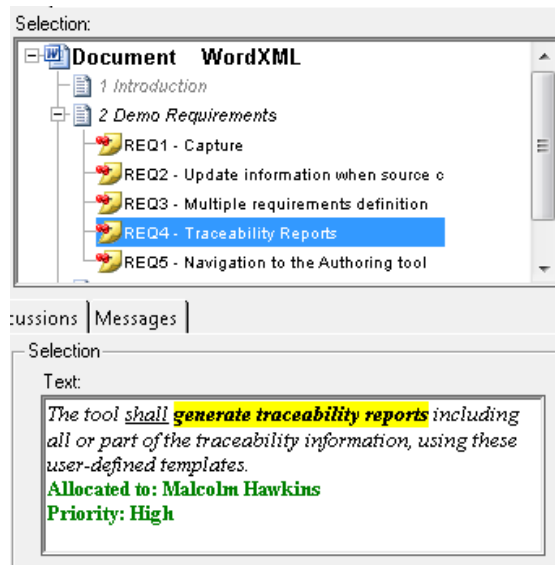
## Support of DOORS 9.5.1

Gateway supports DOORS 9.5.1.

Gateway still complies with DOORS 7.1, DOORS 8.x, and previous DOORS 9.x versions.

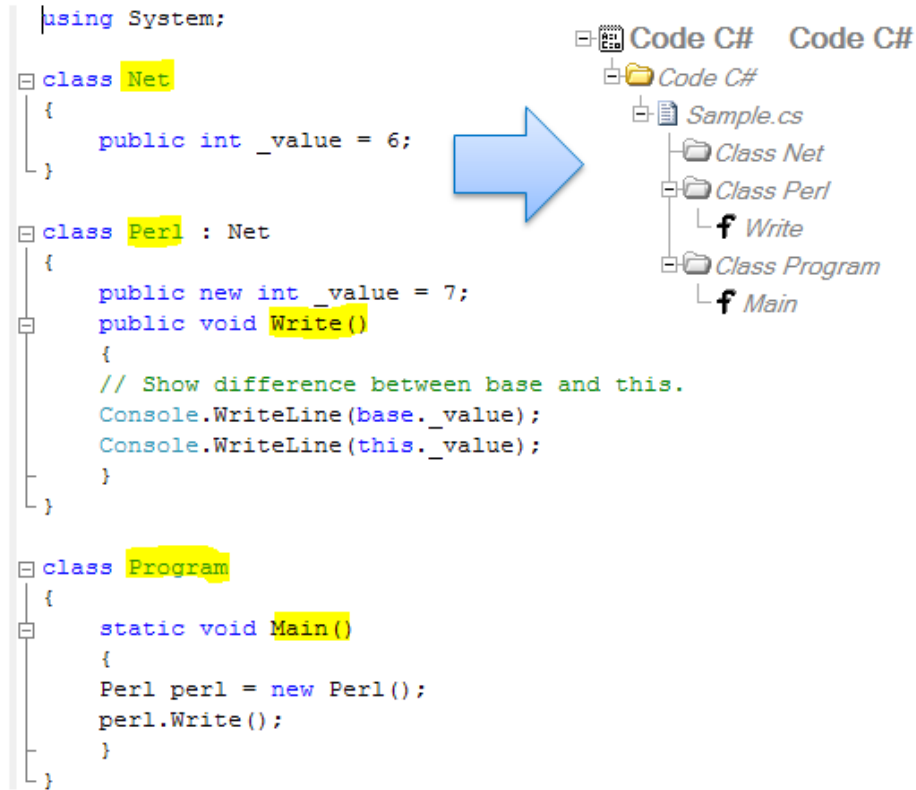
## New Word Converter

A new Word converter is available to capture richer and bigger contents from Word document.



## Code C#

Gateway now provides a Code C# type that captures classes and functions from C# code files.



## Rhapsody interface

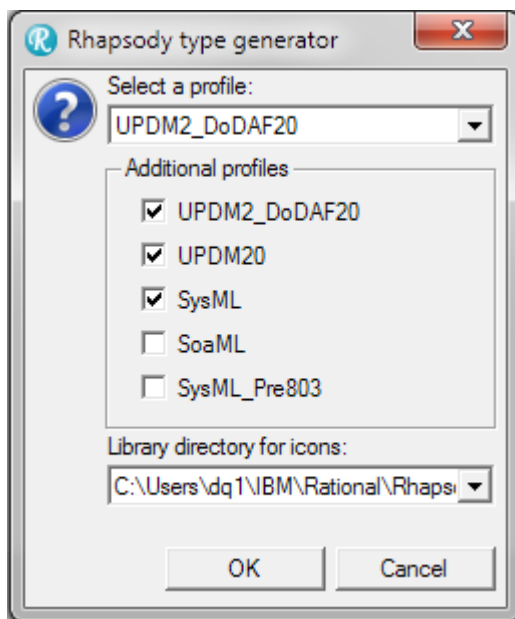
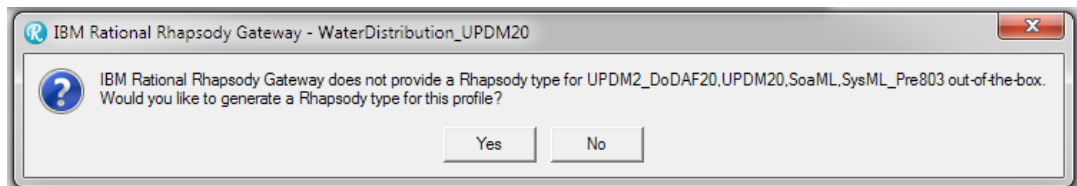
### Rhapsody 64bits

Gateway now supports Rhapsody 64bits.

### Arbitrary profiles support

Now a pop-up suggests to generate a Rhapsody type for profiles that are not supported out-of-the-box the first time a Rhapsody project is opened in Gateway.

This pop-up appears more frequently since Rhapsody projects often use several profiles but Gateway only provides standard Rhapsody types supporting just one profile at a time.

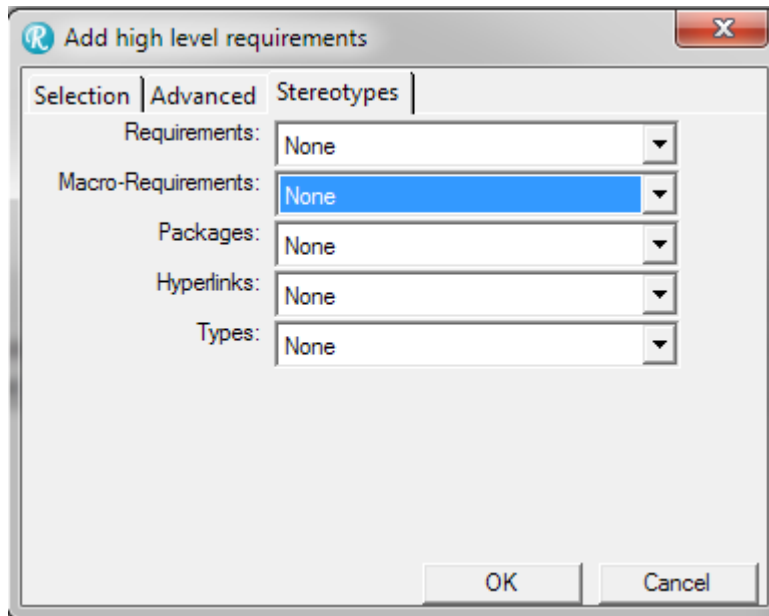


The Rhapsody type generator is still available afterwards in menu “Tools > Generate types for this model” when the Rhapsody document is selected Gateway.

## Add high level Macro-Requirements

Gateway add high level requirements feature is now creating Macro-Requirements as requirements in Rhapsody.

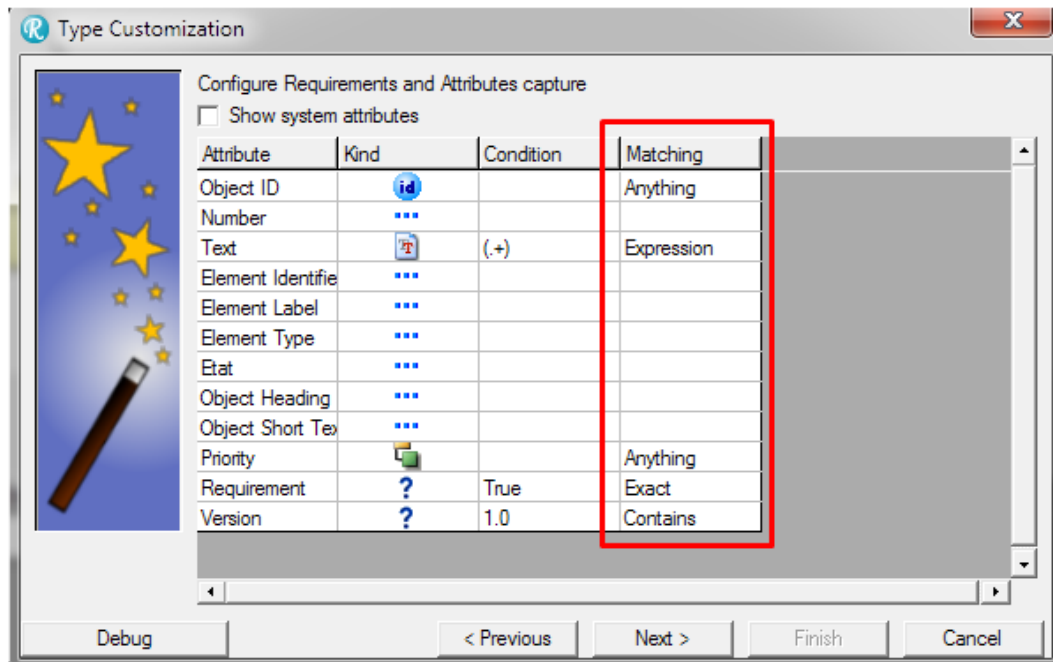
User can select a particular stereotype that will be used when Gateway Macro-Requirements are created as Requirement elements in Rhapsody.



## DOORS Interface

### DOORS Wizard special characters

DOORS Wizard now provides three modes for conditions on attributes. The default mode is “Expression” for regular-expressions matching and is still interpreting special characters. The new modes “Contains string” and “Exact string” are automatically creating appropriate regular-expressions in the DOORS XML type generated.





# RG 8.0.4 – Build 765w32/w64 – 766x

---

Release of RG for Rhapsody 8.0.4 (Windows & Linux).

This maintenance release contains various fixes on the Rhapsody and DOORS interface.

## Support of DOORS 9.5.1.2

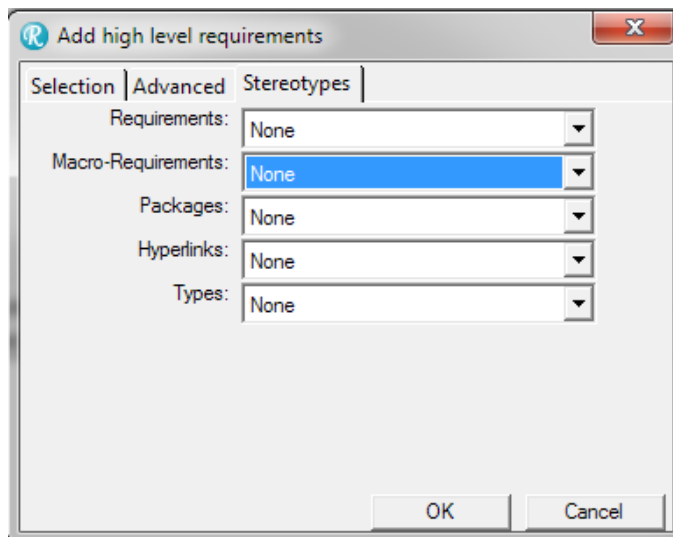
Gateway supports DOORS 9.5.1.2.

Gateway still complies with DOORS 7.1, DOORS 8.x, and previous DOORS 9.x versions.

## Rhapsody interface

### Add high level Requirements and Macro-Requirements

Stereotype settings of Requirements and Macro-Requirements were inverted. This is now fixed.





# RG 8.0.5 – Build 777w32/w64 – 778x

---

Release of RG for Rhapsody 8.0.5 (Windows & Linux).

This maintenance release contains various fixes on the Rhapsody and DOORS interface.

## General Improvements

### New Gateway Icon

Starting from this version Gateway as a new application icon!



You will find this icon in the Start menu group of Rhapsody Gateway.

## Support of DOORS 9.5.2

Gateway supports DOORS 9.5.2.

Gateway still complies with DOORS 7.1, DOORS 8.x, and previous DOORS 9.x versions.

## Rhapsody Interface

### Add High Level Requirements

Fixed inversion between Requirement and Macro-Requirement stereotype configuration.

Other fixes related to UNICODE support and font size in Rhapsody requirement names.



# RG 8.0.6 – Build 794w32/w64 – 795x

Release of RG for Rhapsody 8.0.6 (Windows & Linux).

This maintenance release contains various fixes on the Rhapsody and DOORS interface.

## Global Improvements


### Guide Me

The Gateway Welcome Page in Rhapsody now provides a link to a new Guide Me for the importation of DOORS requirements using the DOORS Wizard.

#### Import Requirements from DOORS

##### ▶ Introduction

Import requirements from Rational DOORS to establish traceability. Use the DOORS wizard to configure DOORS types, and then use Add high-level requirements to add them to your model. DOORS types are configurations that capture chapters, requirements, attributes, and links.

 [Click to begin](#)

##### ▶ Prepare your DOORS database

##### ▶ Import the DOORS tutorial project

##### ▶ Open a model

##### ▶ Open the gateway project

##### ▶ Configure a DOORS connection profile

##### ▶ Open the gateway project editor


##### ▶ Add a new document with DOORS wizard



##### ▶ Select the DOORS module



##### ▶ Configure the new DOORS type



##### ▼ Configure requirement and attribute capture

The next wizard page shows the list of attributes and configuration settings for the DOORS type that you just selected. Define the conditions necessary to find a requirement, identifier, and text.

In the Kind column, select the cell for the Object ID or identifier attribute of your choice. In the drop-down list, select Ident kind. For the text attribute, make sure that Text is selected for now. 

To specify conditions for another attribute, select Present (question mark) or Absent (exclamation mark). Enter a value in the Condition cell in combination with present or absent mode. Use the Matching cell on the right to select the matching mode. In the Tutorial sample project, the conditions are: Requirement attribute = True for Elevator Specs module and ObjectType attribute = Requirement for Elevator Specs Advanced module.  

Select the Attribute type for other DOORS attributes that you want to capture. In the Tutorial sample module, select Priority.  

To capture specific attribute values, specify a Condition. Select Regular expression mode and provide capture groups by using round brackets.  

Click Next >. 

## Support of DOORS 9.5.2.1

Gateway supports DOORS 9.5.2.1.

Gateway still complies with DOORS 7.1, DOORS 8.x, and previous DOORS 9.x versions.

## Rhapsody Interface

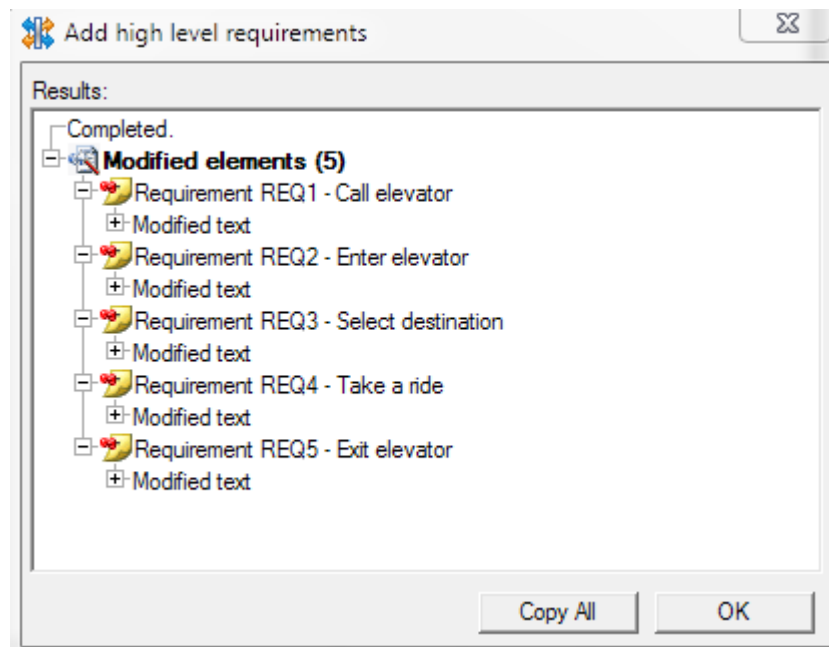
### Attribute Types Support in Add High Level Requirements

Gateway is now properly synchronizing multi-valued attributes from high level requirements in Rhapsody Tags with strings and enumerated values.

The corresponding Attribute types must be properly configured in the high level document types. Refer to the Rhapsody Coupling Notes and Customization Guide.

### Status Logging in Add High Level Requirements

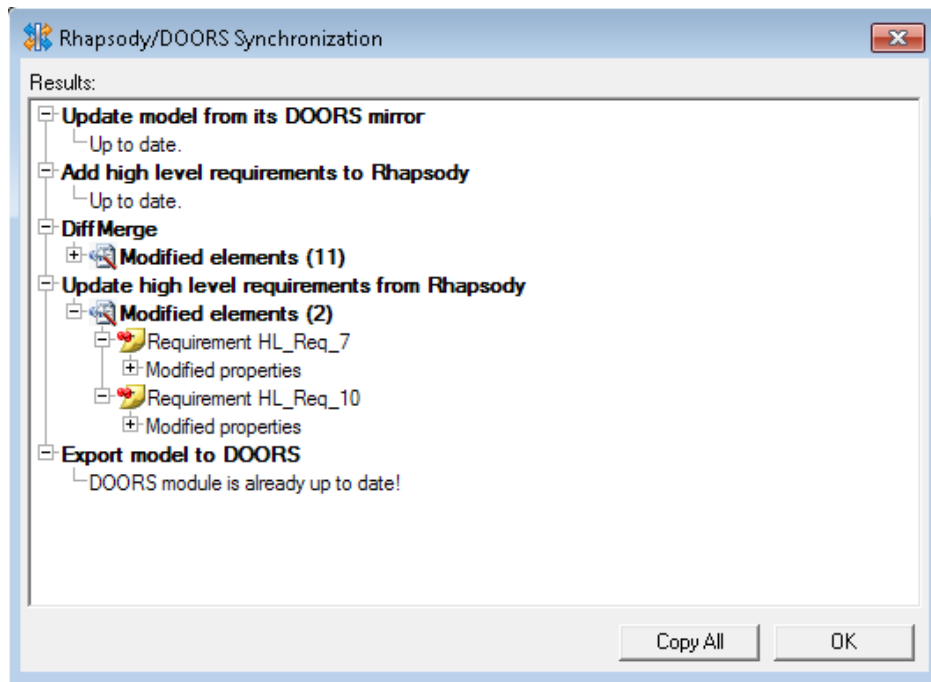
The Add high level requirements feature now comes with a new status dialog providing clearer details on operation performed, errors and warnings.



## Rhapsody / DOORS Bidirectional Synchronization

### Status Logging for All Synchronization Operations

Rhapsody and DOORS synchronization operations were improved to support a new status dialog providing clearer details on operations performed, errors and warnings at the end of synchronization process.



In case of batch execution mode, the corresponding status is traced into the Gateway's log file in text format.

It is also possible to provide environment variable to save the trace in a XML file specified with the environment variable **SYNC\_LOG\_XMLFILE**.

A backup can be created every times by specifying **SYNC\_LOG\_XMLBACKUP=1**.





# RG 8.1 – Build 523w32/w64 – 524x

---

Release of RG for Rhapsody 8.1 (Windows & Linux).

## General Improvements

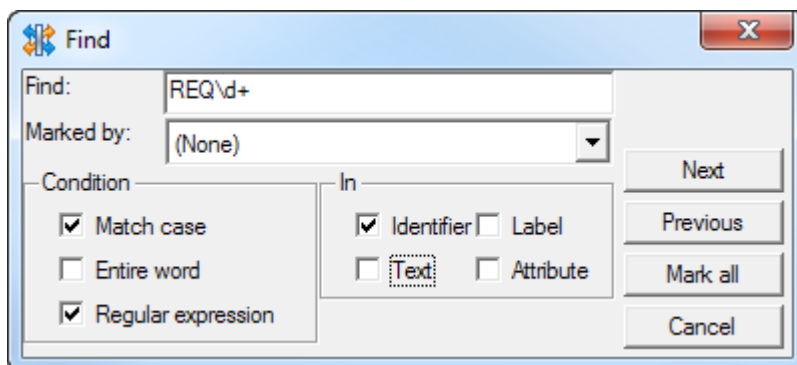
### Report Editor

In Report Editor, it is now possible to create anchors. These anchors can be referenced by URLs defined in the same report model or by an external source.

Instead of deleting all table when deleting a column title, only selected column is deleted.

### Find dialog

Rhapsody Gateway allows to use regular expression in Find dialog to search text.



### Report Generation

A new report structure named *Mark index entry* is available to produce indexes in Word document. These index entries can then be collected by an index defined in template.

On terminal elements, it is possible to set basic character styles like bold, italic, underline,...

A separator string (comma, carriage return, space, ...) can be defined on loops.

Loop on:  
 all requirements ▼

Variable name:  
 req

Condition:

☐ Loop when absent

Loop separator:  
 ,

Sort by:

all requirements of doc : req  
 identifier of req

## PDF Report Generation

Tables are now correctly generated in PDF reports.

PDF Generator works with Japanese and Chinese texts.

It is now possible to modify output format.

## Options

A new option *Save absolute paths* is available in *Options* dialog box to avoid saving absolute paths in .rqt file. The goal is to prevent from modifications on the local copy of a Gateway project file that is under Configuration Management.

Miscellaneous

Number of recent files in the File menu:

Update period (in hours) for non automatic updated document:

Default type for directory drag and drop:

Text Editor:

☒ Ask for reloading

☒ Enable debugging

☒ Launch supervisor when opening Windows session

☒ Open document after generation

☐ Keep a history of cover link creation and deletion in Link Details view

☐ Comment cover link creation and deletion in Link Details view

☐ Save absolute paths

☒ Use internal types

## DOORS Interface

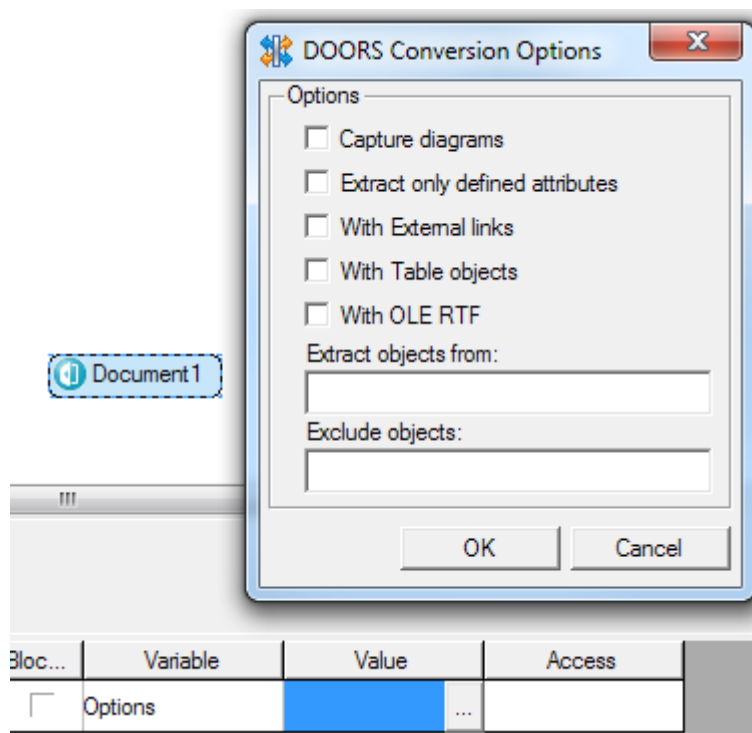
### Support of DOORS 9.6

Gateway supports DOORS 9.6.

Gateway still complies with DOORS 7.1, DOORS 8.x, and previous DOORS 9.x versions.

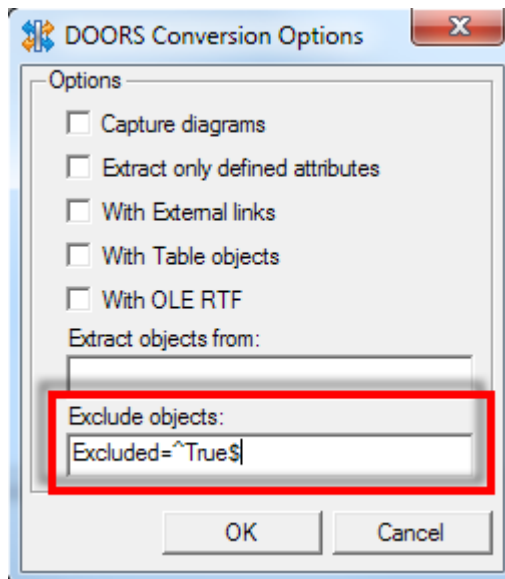
### New DOORS Conversion Options Pop-up

Most DOORS conversion options were moved to a new dialog accessible from clicking the browse button (...) in **Value** column when **Options** is selected in **Variable** column.



### Excluding Objects from Conversion Result

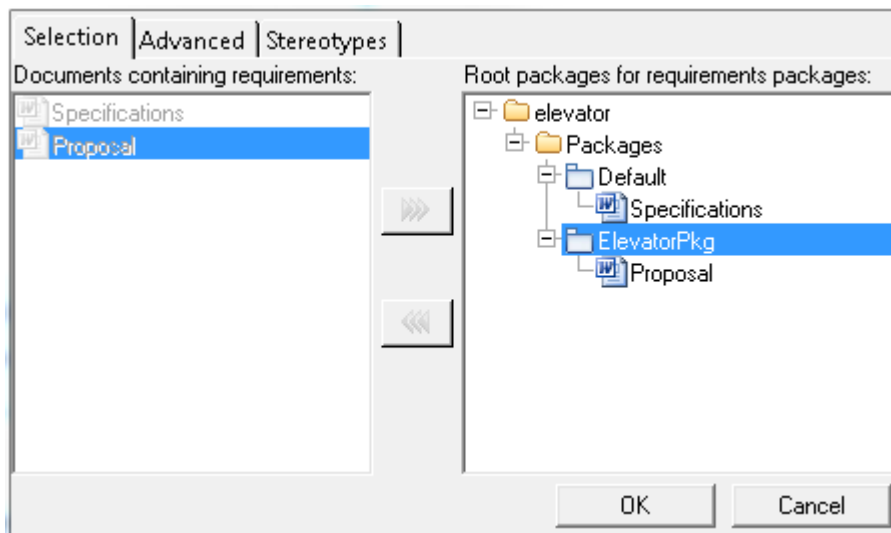
It is now possible to exclude directly objects from the DOORS conversion result by specifying a condition on DOORS attribute value with the following syntax:





## Rhapsody Interface

### Add High Level Requirements to Different Packages

It is now possible to assign documents to different packages in the add high level requirements dialog.



Use  and  buttons or drag'n drop to move documents from Documents list to Packages tree and vice versa.

# RG 8.1.1 – Build 533w32/w64 – 534x

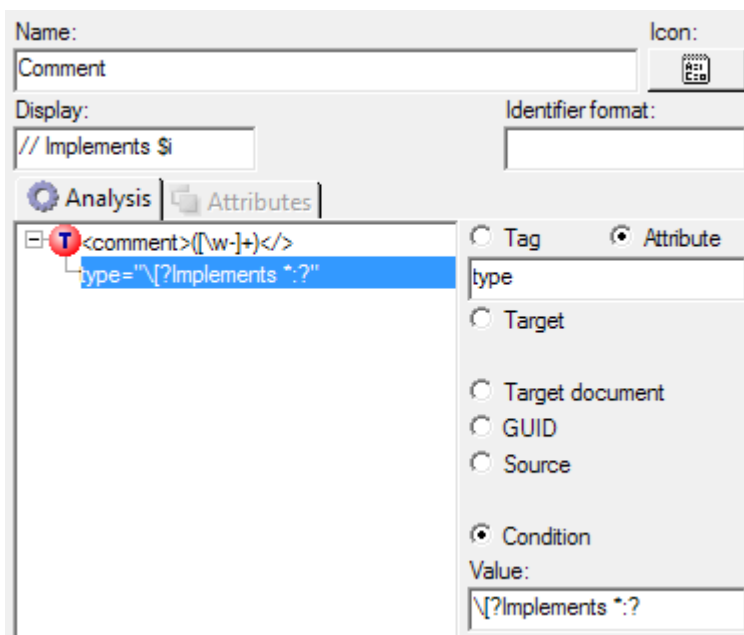
---

Release of RG for Rhapsody 8.1.1 (Windows & Linux).

This maintenance release contains various fixes.

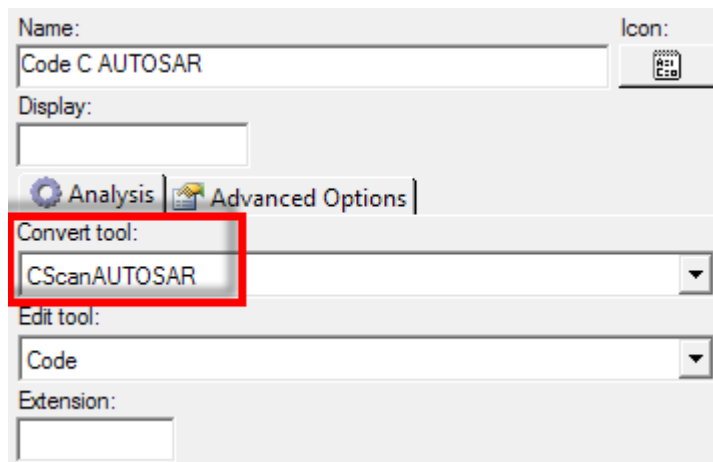
## Code C, C++ and C#

It is now possible to extract values from comment lines starting with particular keywords by specifying a regular expression in the attribute “type”. As a result, the comment regular expression behaves as a sub-regular expression and it is possible to extract multiple values more reliably.



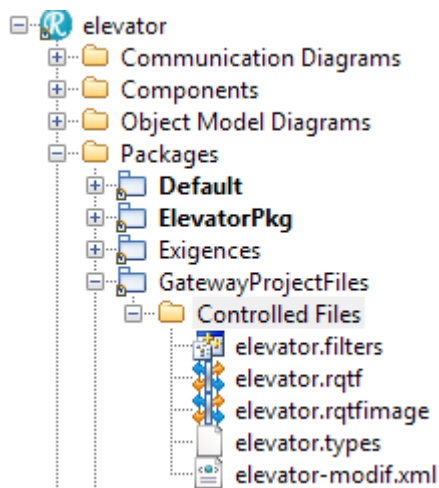
## Code C AUTOSAR

Added Code C AUTOSAR converter that supports particular AUTOSAR macro definitions in function signatures.



## Rhapsody interface

Now Gateway automatically adds Gateway project files as Rhapsody controlled files.



This is only applicable to following project files that are located immediately under the Rhapsody <project>\_rpy folder:

- Project description (<project>.rqtf)
- Project analysis (<project>.rqtfimage)
- Project filters (<project>.filters)
- Project marks (<project>.marks)
- Project types (.types)
- Automatic modification files (.xml)
- Other files directly pointed by Gateway project documents

# RG 8.1.2 – Build 353w32/w64 – 354x

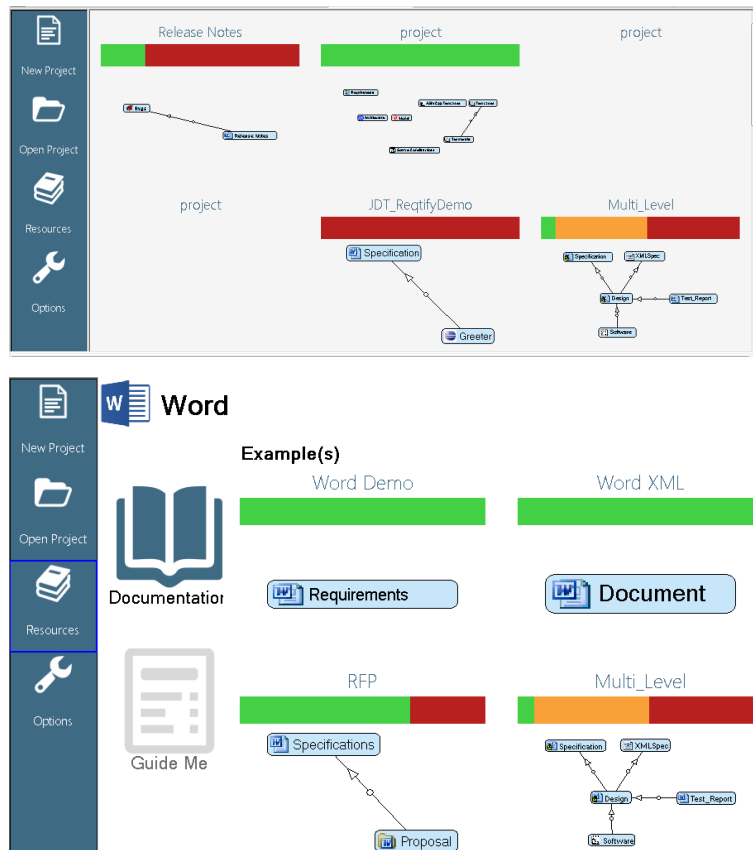
Release of RG for Rhapsody 8.1.2 (Windows & Linux).

This maintenance release contains various fixes and improvements.

## General Improvements

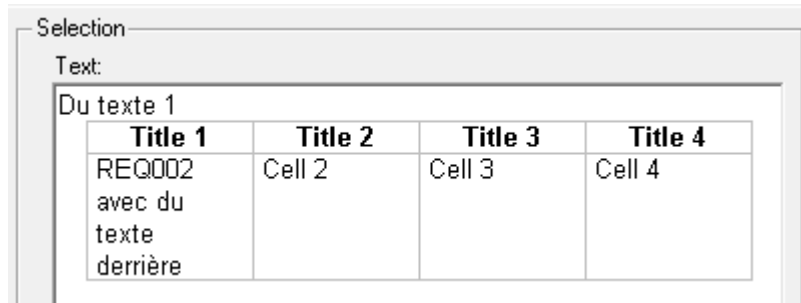
### Welcome Screen

A welcome screen is available on Gateway startup providing basic actions like creating, opening a project and quicker access to resources (documentation, example ...). Use menu **View > Welcome Screen** to show the welcome screen while a project is opened.



## Rich texts

When a rich text contains tables, these tables are now well displayed in rich edit widget even if it contains long texts.



## Types

A checkbox is available in type editor for Attributes to type them as number. This allows numeric comparison instead of string comparison.

Variable substitution is now possible in XML analysis tree. These variables are referenced using '\$' sign. Values are found in document among variable values defined on document. This function is used by ReqIF coupling to avoid multiple type definition.

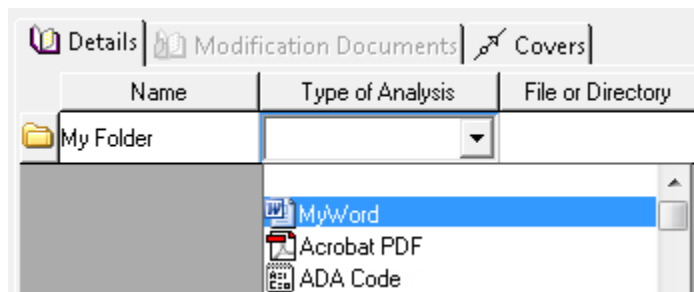
## Snapshots

To be more precise when creating snapshots, snapshots are now saved with the number of seconds in the file name.

## Project Editor

When editing project, multiple covers can be created without clicking multiple times on Add cover button.

It is now possible to assign a type of analysis to a folder. When a document is created in this folder, this type will be automatically applied. The goal is to save time during project creation.



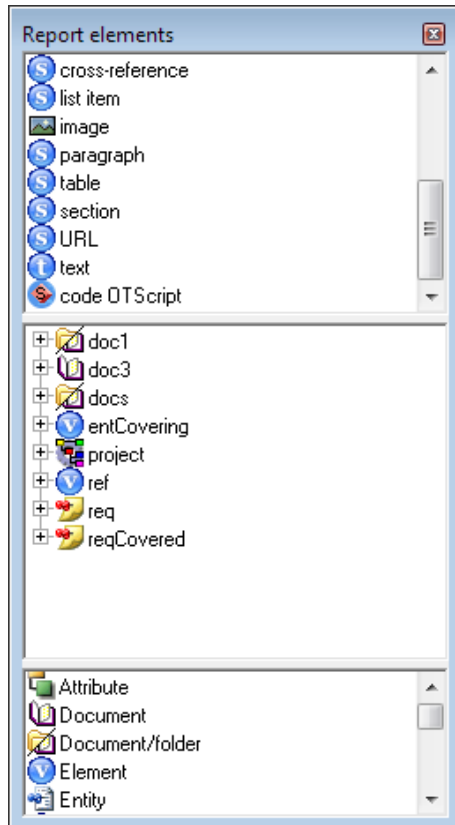


## Types Editor

When pasting a type, if the type is already present in the current document type, a child is pasted instead of a copied type. This allows to add new parent to existing type.

## Report Editor

Report elements dialog box can be displayed with all tree lists present at the same time.



## XML Analysis

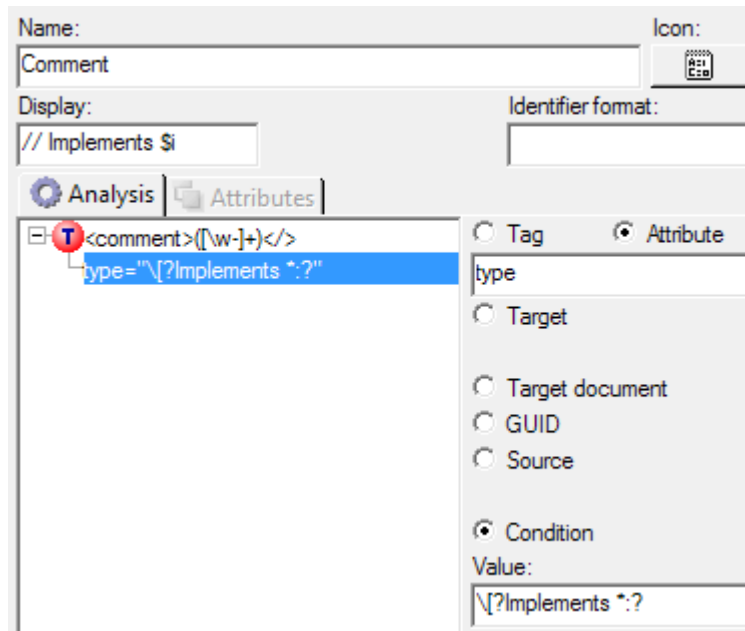
During XML analysis of types for multiple files, directory and file tags are available implicitly for XML capture allowing to realize multi-XML types for arbitrary files.

## Microsoft Word Viewer

A new edit connector is available to use Word Viewer instead of Word. This connector is simplified regarding to Word connector as no API is available. When navigating, the Word document is opened without any selection.

## Code C, C++ and C#

It is now possible to extract values from comment lines starting with particular keywords by specifying a regular expression in the attribute “type”. As a result, the comment regular expression behaves as a sub-regular expression and it is possible to extract multiple values more reliably.



## DOORS Interface

### Support of DOORS 9.6.1

Gateway supports DOORS 9.6.1.

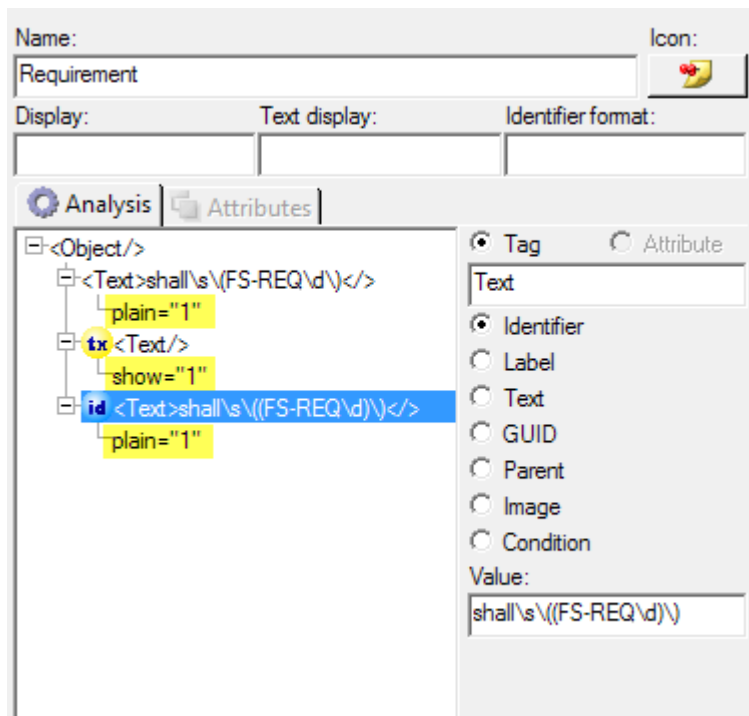
Gateway still complies with DOORS 7.1, DOORS 8.x, and previous DOORS 9.x versions.

### Rich text conversion and processing

During conversion, object texts with images and OLE objects are saved in separate files to allow big DOORS modules analysis.

Raw text processing is possible in addition to rich text extraction by specifying the following conditions on all <Text> tags:

- **plain="1"** as plain text for conditions and regular expression processing,
- **show="1"** as text to be shown that is likely to contain the plain text or the rich text.



## Export to DOORS with Flat Mode

Export to DOORS now provides an option to automatically filter out category elements of Rhapsody types during the export.

Right-click the **Types** tree and activate **Flat mode** so the category types disappear. The option **Keep children of filtered elements** is automatically activated in order to export Rhapsody elements without their parent group.

